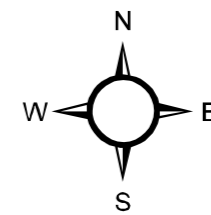
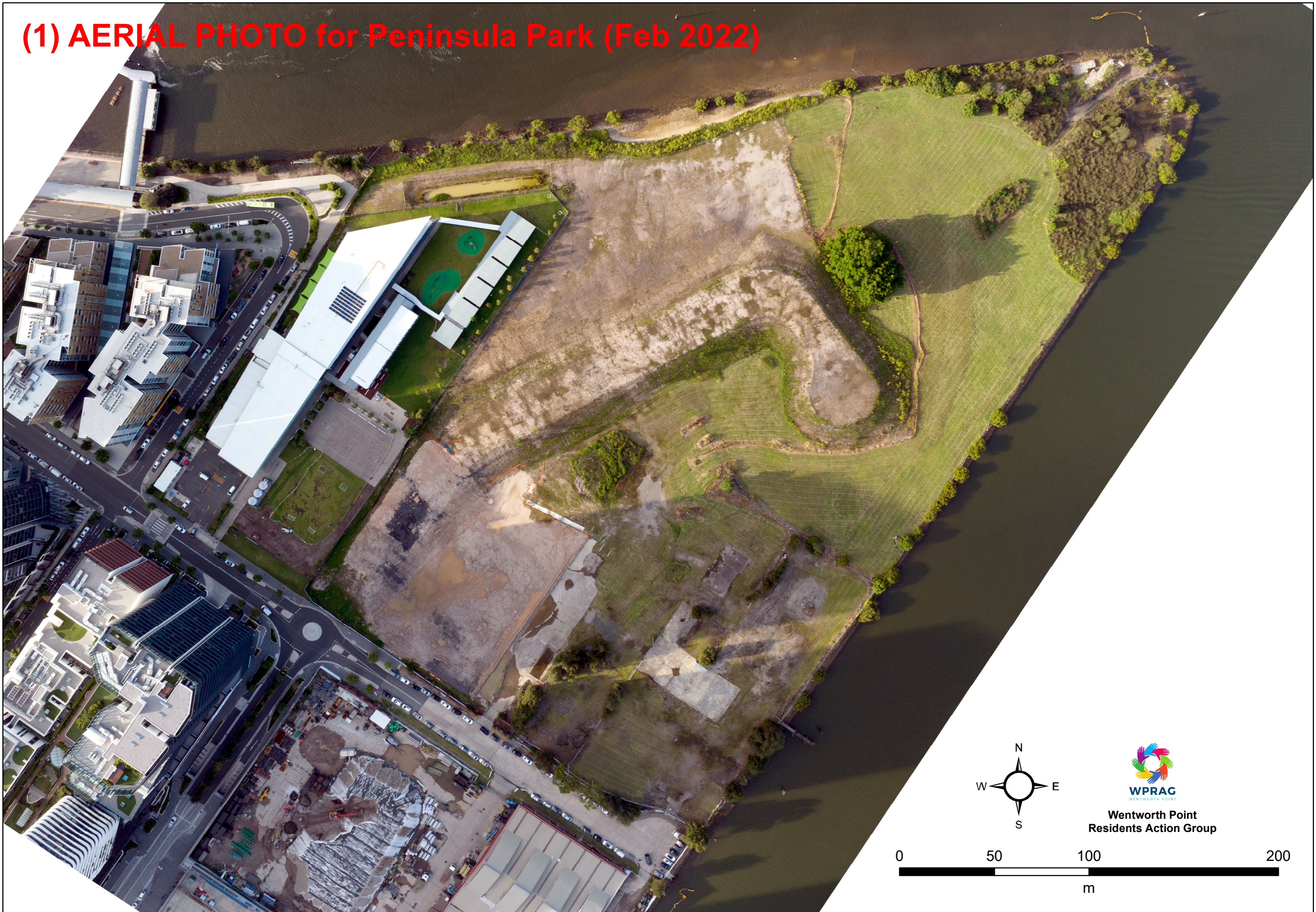
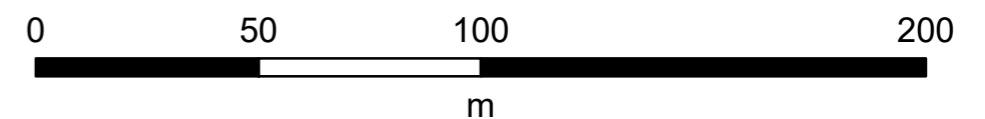


# (1) AERIAL PHOTO for Peninsula Park (Feb 2022)



Wentworth Point  
Residents Action Group



# (2) ORIGINAL PLAN for Peninsula Park



- LEGEND**
- BOUNDARY
  - EXTENT OF WORK
  - PROPOSED LEVEL
  - EXISTING LEVEL
  - EXISTING ROAD
  - STREET TREE
  - STREET TREE
  - NEW PARK TREE
  - EXISTING TREE
  - EXISTING TREE REFER TO ARM
  - EXISTING PALM
  - FOOTPATH
  - CYCLEWAY
  - SCULPTURAL INSET

- KEY**
- 1 Active Space**  
Informal open recreational space
  - 2 Promenade walk**  
High quality paved promenade with paving bands. The walkway includes 50mm sleepers, feature promenade lighting and 600mm Dia sandstone rocks proposed at the end of walkway
  - 3 Playground**  
Playground with interpretive play equipment, swings, slides embankments, feature
  - 4 Outdoor Cafe space**  
Proposed outdoor Cafe/ spill out space for dining use to promenade edge
  - 5 Boardwalk**  
Proposed 2.5m wide raised timber walkway to the protected Salt Marsh vegetation to minimise impact on the vegetation. Existing Salt Marsh is adequately protected
  - 6 Existing salt marsh**  
Salt Marsh is adequately protected. Regeneration Planting Zones are to incorporate planting principles, refer to Ecological
  - 7 Seating**  
Precast formed concrete seating walls to embankment to form an informal amphitheatre
  - 8 Park shelters**  
Park shelters with electric BBQ facilities and table and bench seating
  - 9 Wetland**  
Proposed planted wetlands and biofiltration into the WSUD Strategy, within the park for treatment of on site water
  - 10 View platform / bridge**  
The timber bridge is a potential location for signage identifying the importance of the wetland communities
  - 11 Reconstructed rip rap battered embankment**  
600mm dia sandstone rocks to embankment edge
  - 12 Existing Fig trees to be retained**  
Existing Fig trees to be retained with timber deck seating
  - 13 Water edge walkway**  
Existing walkway to be retained along river edge and selected removal of existing canopy to retain views and ensure user safety. Proposed equipment along length of park
  - 14 Existing Row of Palms**  
Existing Row of Palms to be retained
  - 15 Arrival Plaza**  
Peninsula Park arrival gateway

Note: faded areas including building lots indicate work by others

**context**

52-58 William Street East Sydney NSW 2011  
PO Box A866 Sydney South NSW 1235  
T. 8244 8900 F. 8244 8988 E. context@context.com.au

Client **Urban Growth**

Scale: 1:750 @ A1

Dwg Ref No. 13506\_L\_1000  
Date: 24 Oct 2014

**PARK MASTERPLAN**

**Wentworth Point Residents Action Group**



### (3) NEW PLAN for Peninsula Park

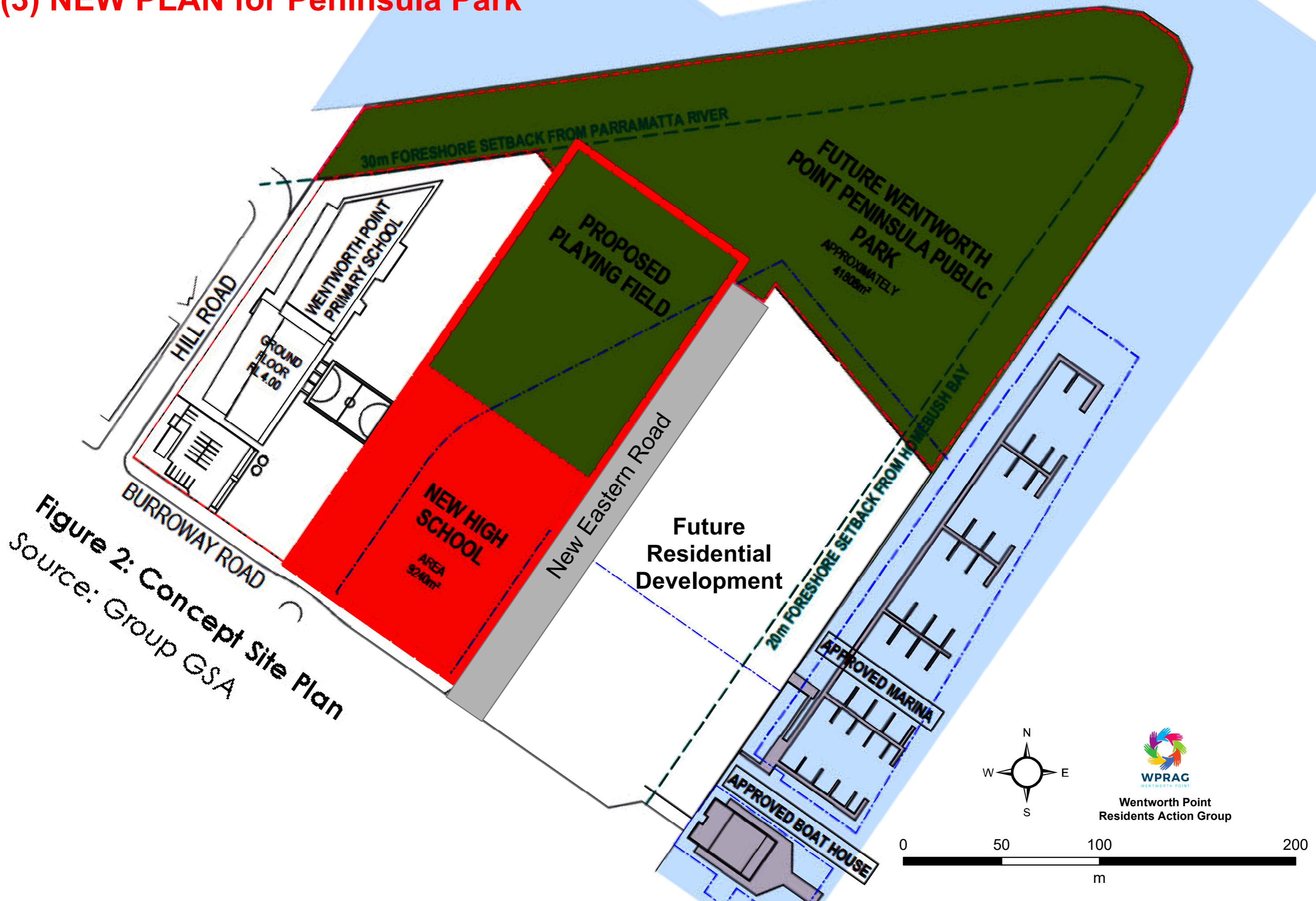


Figure 2: Concept Site Plan  
Source: Group GSA

# (4) NEW PLAN for Peninsula Park

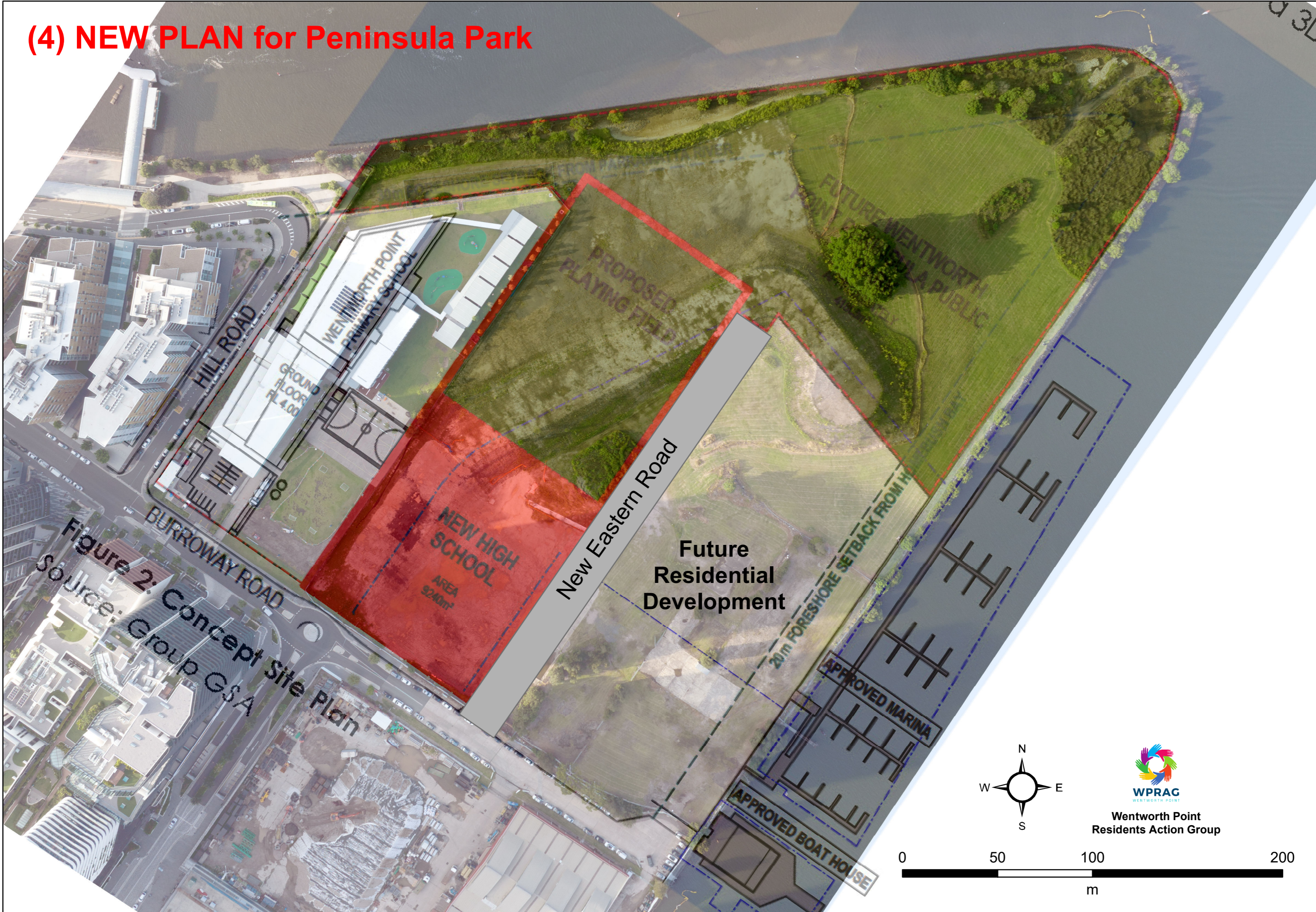
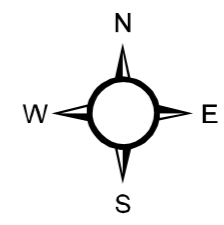
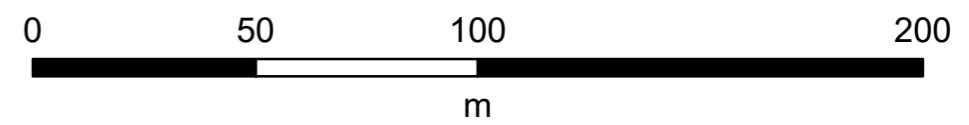


Figure 2: Concept Site Plan  
Source: Group GSA

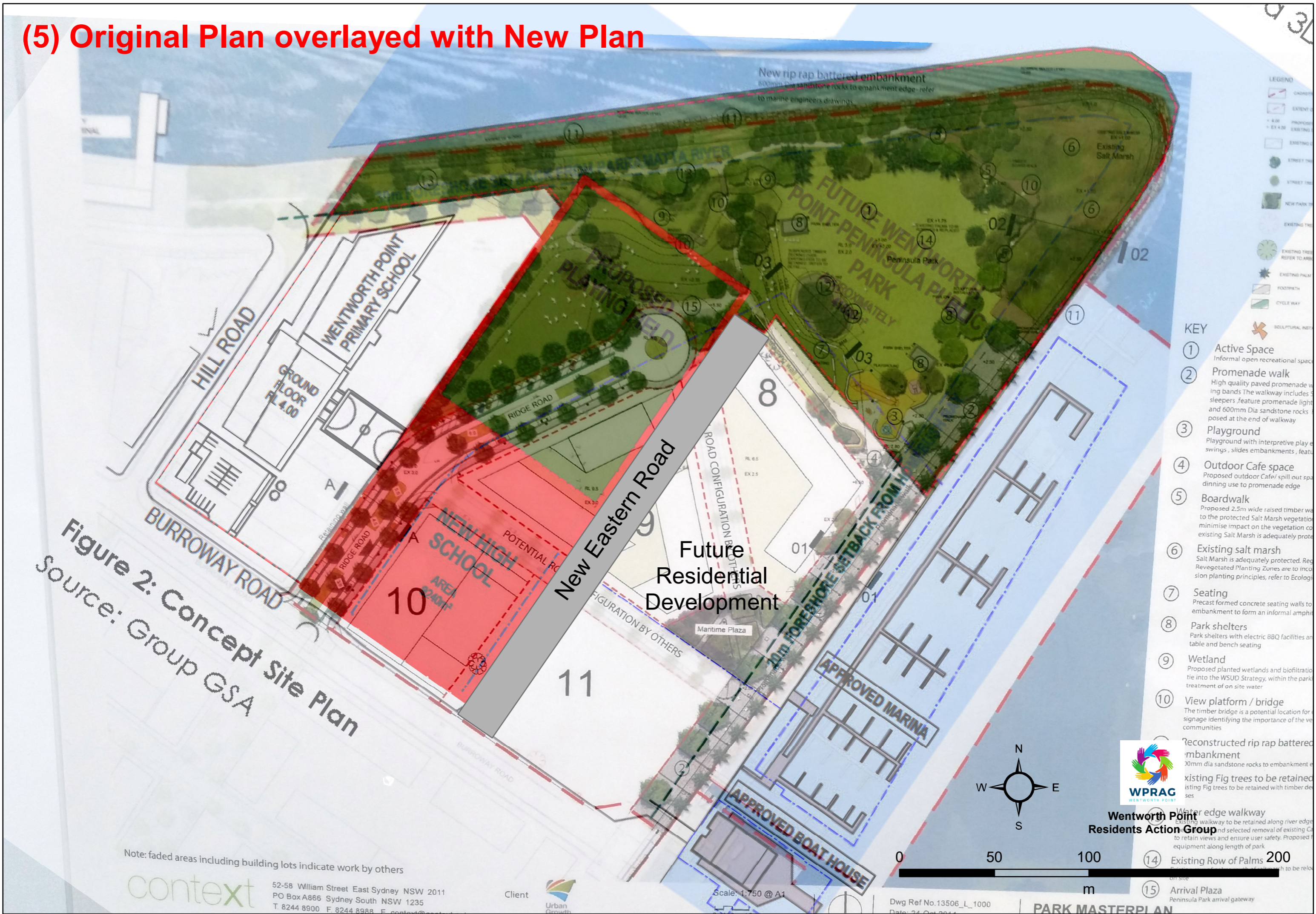


Wentworth Point Residents Action Group



# (5) Original Plan overlaid with New Plan

Figure 2: Concept Site Plan  
Source: Group GSA



- LEGEND**
- EXISTING
  - PROPOSED
  - EXISTING
  - EXISTING
  - STREET TREE
  - STREET TREE
  - NEW PARK TREE
  - EXISTING TREE
  - EXISTING TREE REFER TO APP
  - EXISTING PALM
  - FOOTPATH
  - CYCLE WAY
  - SCULPTURAL ART

- KEY**
- ① Active Space  
Informal open recreational space
  - ② Promenade walk  
High quality paved promenade walking bands. The walkway includes 3 sleepers, feature promenade lighting and 600mm Dia sandstone rocks posed at the end of walkway
  - ③ Playground  
Playground with interpretive play elements, swings, slides, embankments, features
  - ④ Outdoor Cafe space  
Proposed outdoor Cafe/ spill out space for dining use to promenade edge
  - ⑤ Boardwalk  
Proposed 2.5m wide raised timber walkway to the protected Salt Marsh vegetation to minimise impact on the vegetation. Existing Salt Marsh is adequately protected
  - ⑥ Existing salt marsh  
Salt Marsh is adequately protected. Revegetated Planting Zones are to incorporate planting principles, refer to Ecology
  - ⑦ Seating  
Precast formed concrete seating walls to embankment to form an informal amphitheatre
  - ⑧ Park shelters  
Park shelters with electric BBQ facilities and table and bench seating
  - ⑨ Wetland  
Proposed planted wetlands and biofiltration into the WSUD Strategy, within the park treatment of on site water
  - ⑩ View platform / bridge  
The timber bridge is a potential location for signage identifying the importance of the wetland communities
  - ⑪ Reconstructed rip rap battered embankment  
300mm dia sandstone rocks to embankment edge
  - ⑫ Existing Fig trees to be retained  
Existing Fig trees to be retained with timber deck
  - ⑬ Water edge walkway  
Existing walkway to be retained along river edge and selected removal of existing canopy to retain views and ensure user safety. Proposed equipment along length of park
  - ⑭ Existing Row of Palms  
Existing Row of Palms to be retained
  - ⑮ Arrival Plaza  
Peninsula Park arrival gateway

Note: faded areas including building lots indicate work by others

context

52-58 William Street East Sydney NSW 2011  
PO Box A866 Sydney South NSW 1235  
T. 8244 8900 F. 8244 8988 E. context@context.com.au

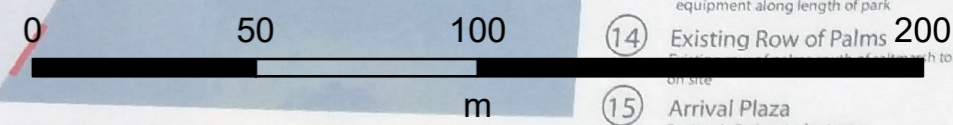
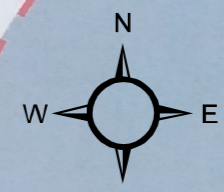
Client Urban Growth

Scale: 1:750 @ A1

Dwg Ref No. 13506\_L\_1000  
Date: 24 Oct 2014

PARK MASTERPLAN

Wentworth Point Residents Action Group



# (6) COMMUNITY PLAN for Peninsula Park

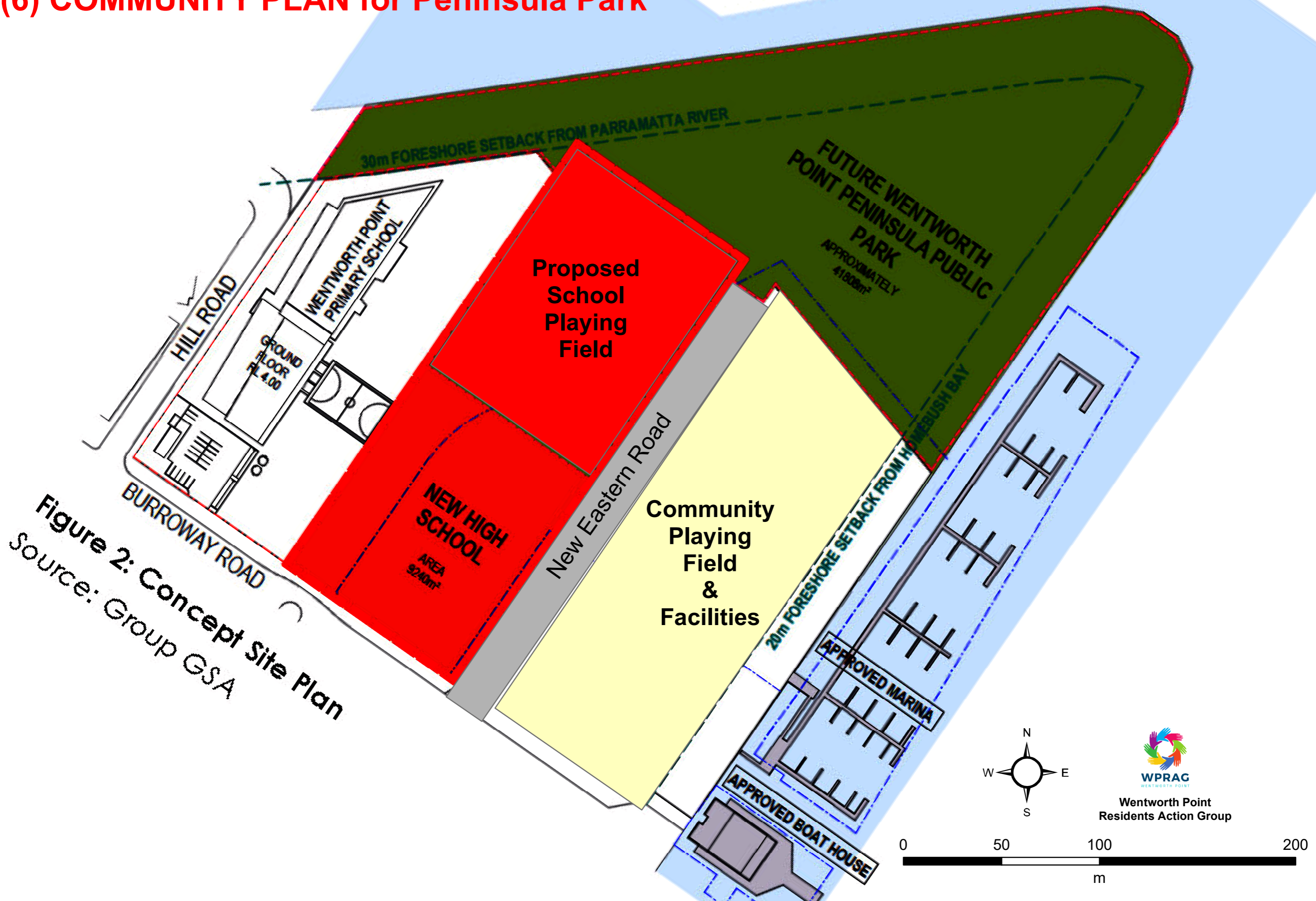


Figure 2: Concept Site Plan  
Source: Group GSA

