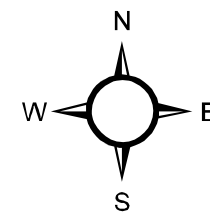
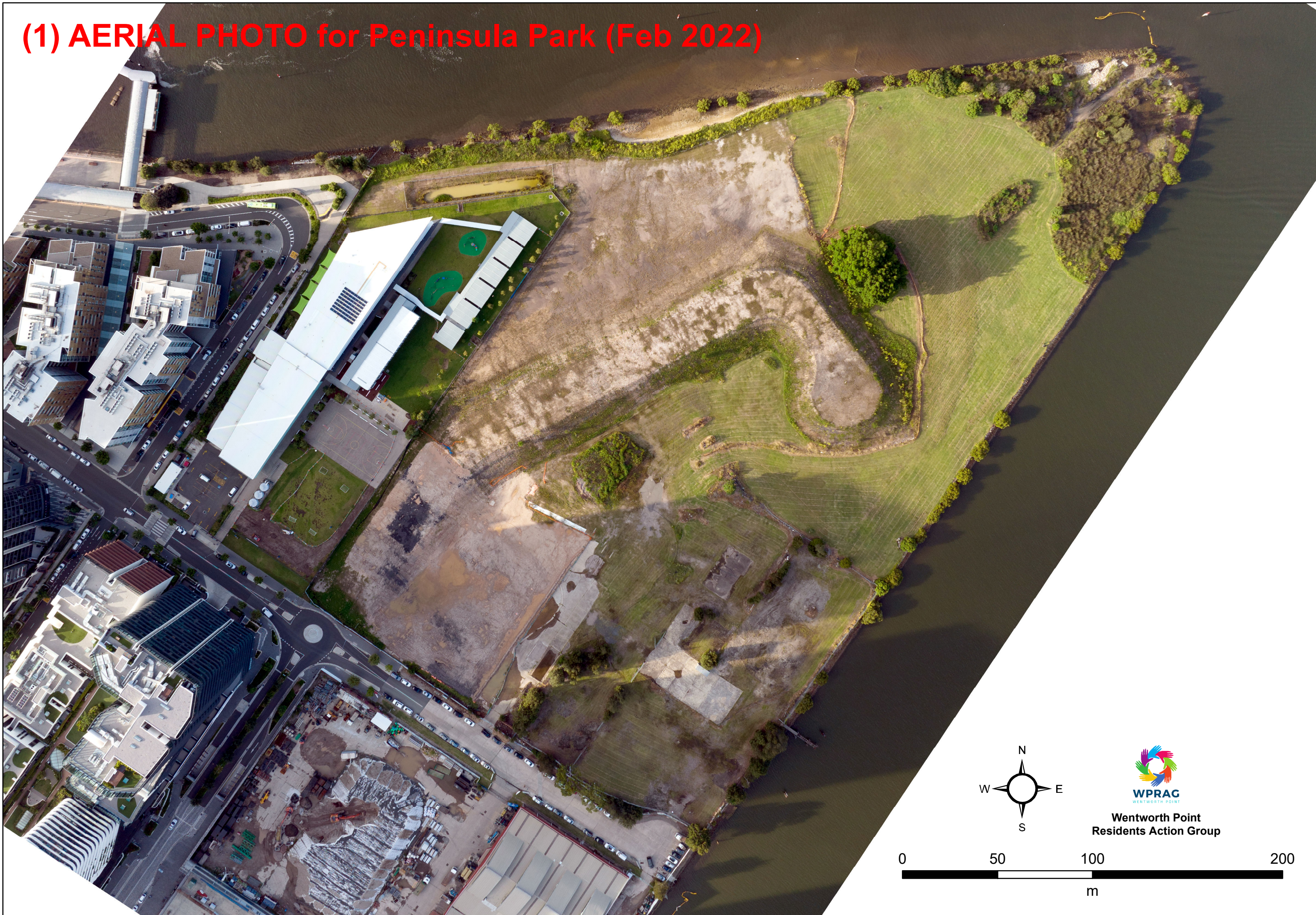
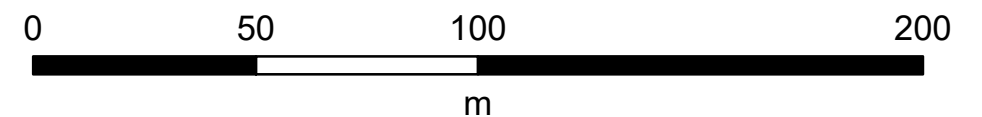


(1) AERIAL PHOTO for Peninsula Park (Feb 2022)



Wentworth Point
Residents Action Group



(2) ORIGINAL PLAN for Peninsula Park



(3) NEW PLAN for Peninsula Park

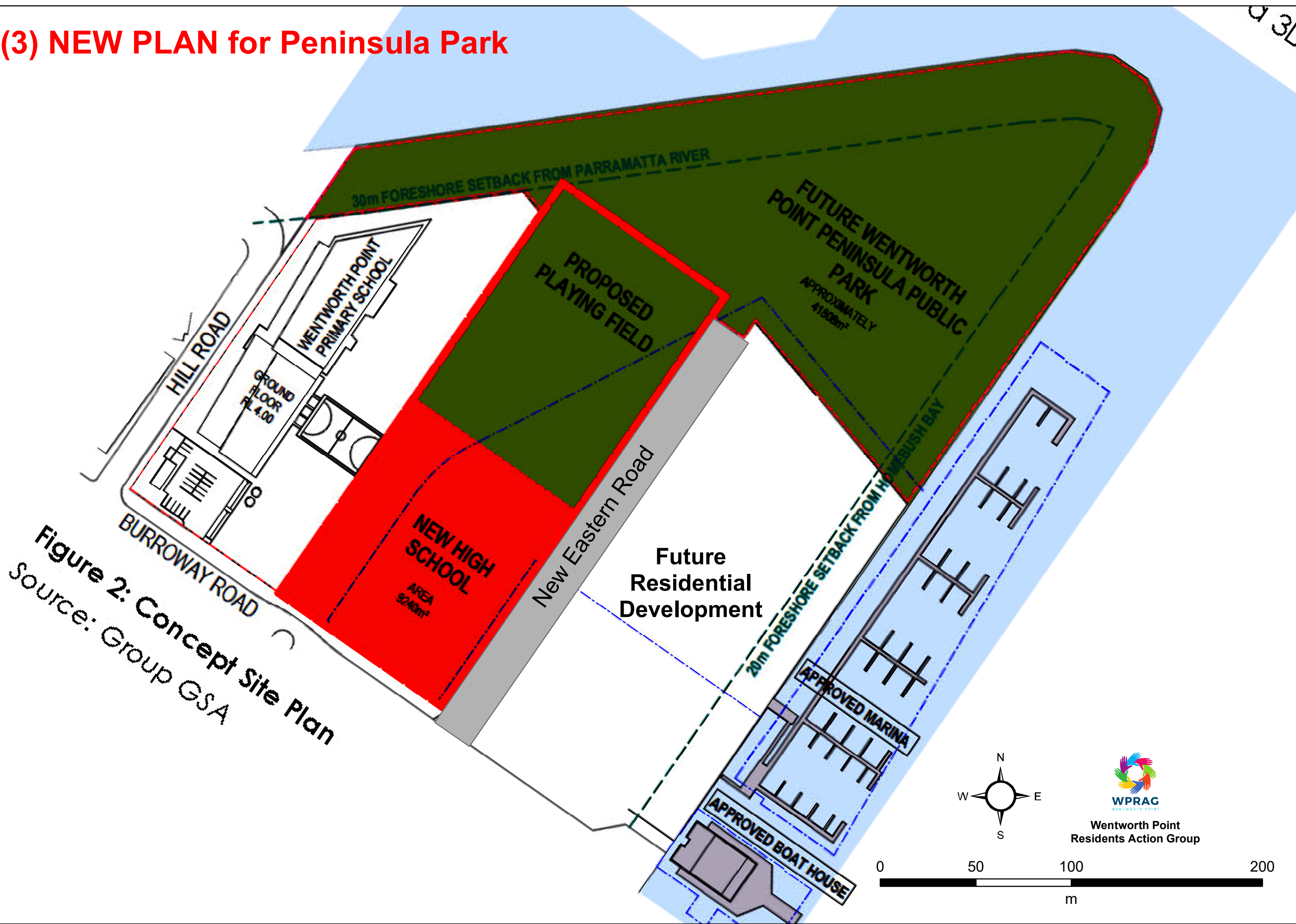


Figure 2: Concept Site Plan
Source: Group GSA

(4) NEW PLAN for Peninsula Park

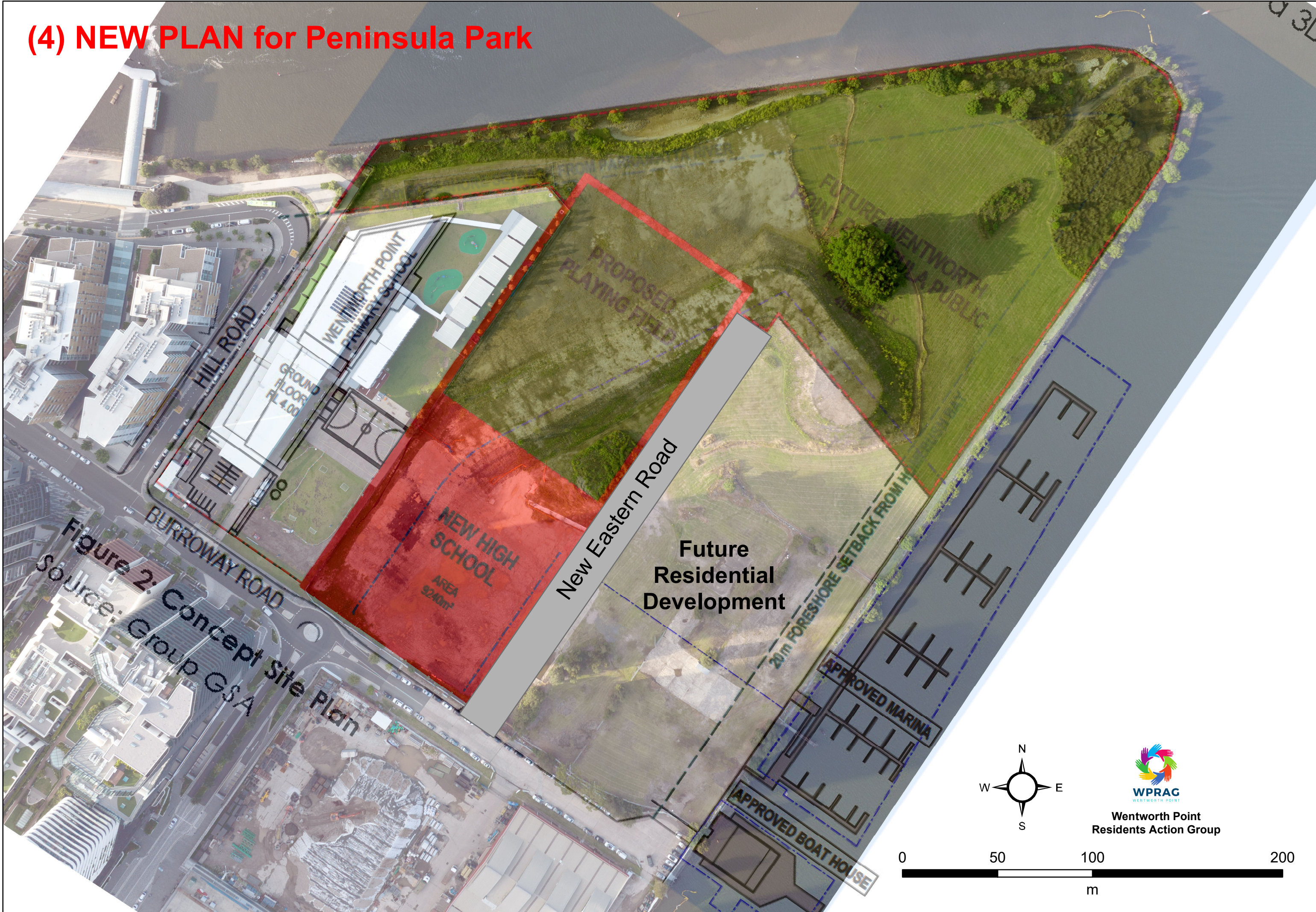


Figure 2: Concept Site Plan
Source: Group GSA

0 50 100 200
m

Wentworth Point
Residents Action Group

(5) Original Plan overlayed with New Plan

Figure 2: Concept Site Plan
Source: Group GSA

Note: faded areas including building lots indicate work by others

context

52-58 William Street East Sydney NSW 2011
PO Box A866 Sydney South NSW 1235
T. 8244 8900 F. 8244 8988 E. context@context.com.au

Client



Scale: 1:750 @ A1

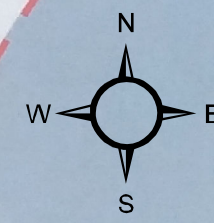
Dwg Ref No.13506_L_1000
Date: 24 Oct 2014

PARK MASTERPLAN

Wentworth Point
Residents Action Group



- KEY**
- ① Active Space
Informal open recreational space
 - ② Promenade walk
High quality paved promenade with 3m wide bands. The walkway includes 3m wide bands. The walkway includes 3m wide bands. The walkway includes 3m wide bands.
 - ③ Playground
Playground with interpretive play equipment, swings, slides, embankments, features.
 - ④ Outdoor Cafe space
Proposed outdoor Cafe/ spill out space for dining use to promenade edge.
 - ⑤ Boardwalk
Proposed 2.5m wide raised timber walkway to the protected Salt Marsh vegetation to minimise impact on the vegetation. The existing Salt Marsh is adequately protected.
 - ⑥ Existing salt marsh
Salt Marsh is adequately protected. Regeneration Planting Zones are to incorporate planting principles, refer to Ecology.
 - ⑦ Seating
Precast formed concrete seating walls to embankment to form an informal amphitheatre.
 - ⑧ Park shelters
Park shelters with electric BBQ facilities and table and bench seating.
 - ⑨ Wetland
Proposed planted wetlands and biofiltration into the WSUD Strategy, within the park treatment of on site water.
 - ⑩ View platform / bridge
The timber bridge is a potential location for signage identifying the importance of the wetlands.
 - ⑪ Reconstructed rip rap battered embankment
100mm dia sandstone rocks to embankment edge.
 - ⑫ Existing Fig trees to be retained
Existing Fig trees to be retained with timber deck.
 - ⑬ Water edge walkway
Existing walkway to be retained along river edge and selected removal of existing canopy to retain views and ensure user safety. Proposed equipment along length of park.
 - ⑭ Existing Row of Palms
Existing Row of Palms to be retained.
 - ⑮ Arrival Plaza
Peninsula Park arrival gateway.



0 50 100 200
m



(6) COMMUNITY PLAN for Peninsula Park

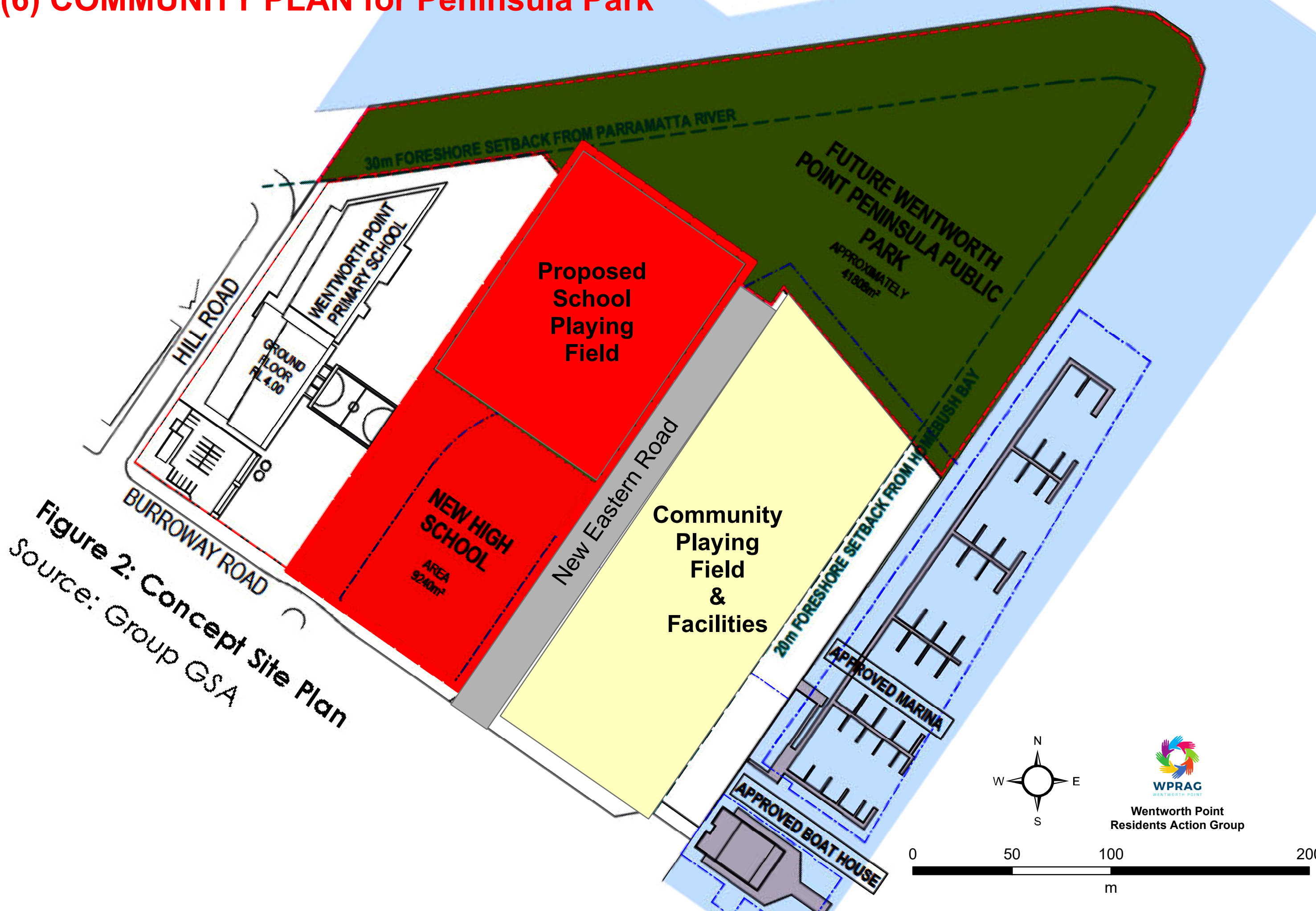


Figure 2: Concept Site Plan
Source: Group GSA