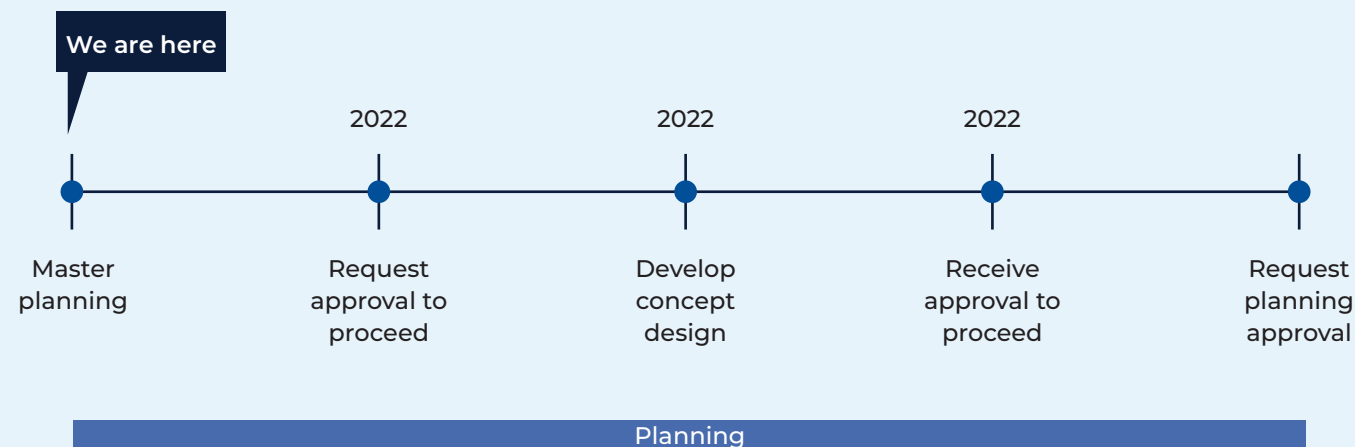


Planning for Rydalmere Education Campus

Planning update

March 2022

Anticipated project timeline



Planning underway for Rydalmere Education Campus

School Infrastructure NSW is currently undertaking planning for a new primary and high school in Rydalmere. Master planning is currently underway, and design aspects, site locations, educational and operational elements are being considered.

It is anticipated the educational campus will include features such as:

- flexible learning spaces
- a hall and library
- outdoor learning spaces
- canteen and student facilities
- administration and staff areas
- out of school care facilities
- outdoor play areas.

Frequently asked questions

What future consultation is planned for the local community about the new Rydalmere Education Campus?

As the project progresses and during the planning pathway process of submitting a SSD and preparing a EIS, the community will have the opportunity to comment on the project proposal.

How can I get involved?

We are committed to working together with our school communities and other stakeholders to deliver the best possible facilities for students. Your feedback on this project is important to us. For more information, comments, or to make a comment please email schoolinfrastructure@det.nsw.edu.au or phone 1300 482 651.

For more information contact:

School Infrastructure NSW
Email: schoolinfrastructure@det.nsw.edu.au
Phone: 1300 482 651
www.schoolinfrastructure.nsw.gov.au

Planning for Rydalmere Education Campus

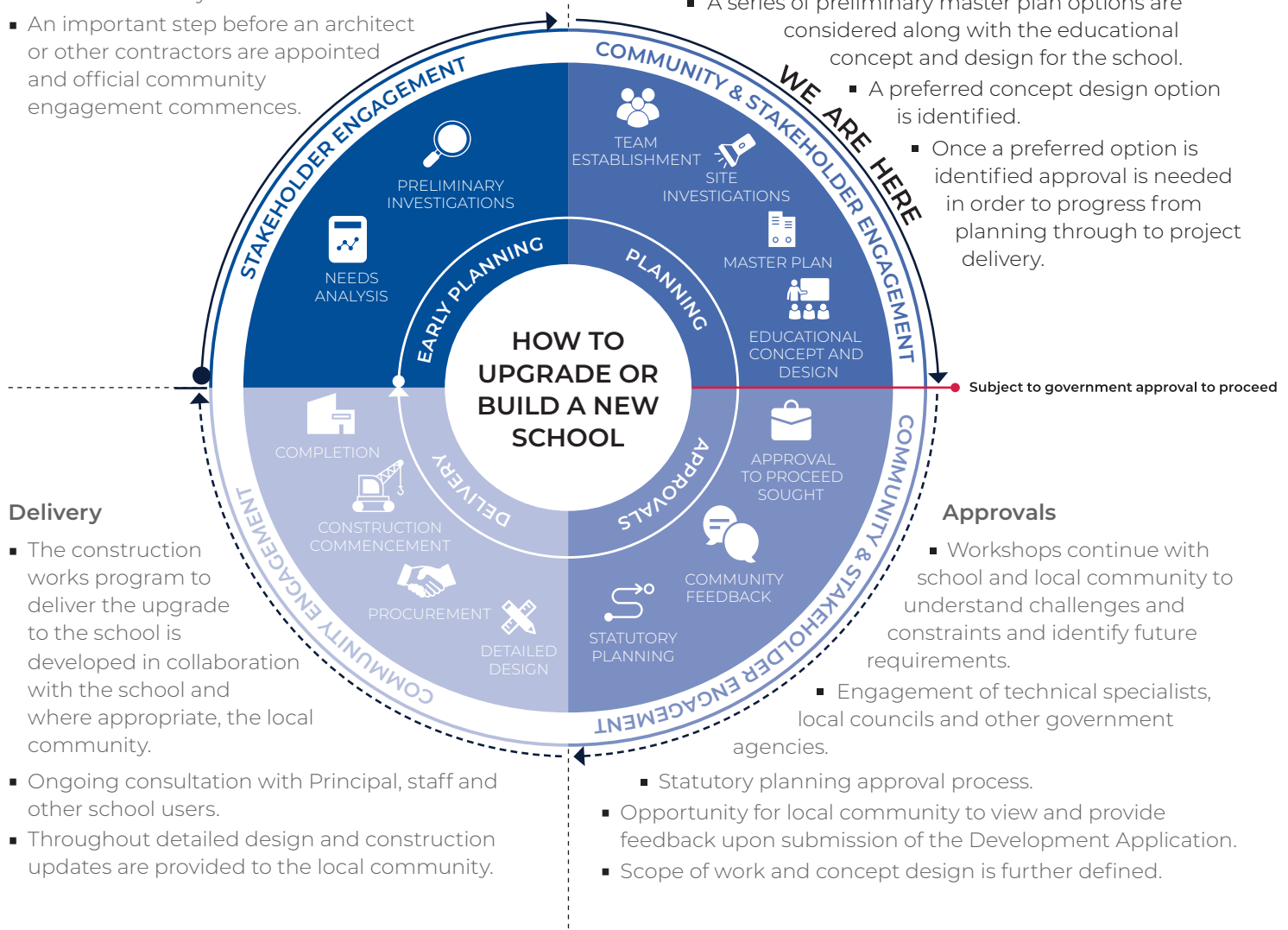
Funding has been allocated for a new Education Campus in Rydalmere. The information below takes you through the journey of building a new school.

Early planning

- Consideration and studies of demographic trends, education requirements, the condition of the existing school buildings, catchment boundaries, heritage requirements, transport links and partnership opportunities.
- Doing so means that we:
 - consider the needs of the local area now and into the future.
 - ensure the right school is designed for the community.
- An important step before an architect or other contractors are appointed and official community engagement commences.

Planning

- Consultants such as architects and project managers are appointed.
- Investigation and review of site and development of master plan options.
- Master planning considers options for the general size, shape and form of buildings for a specific school site.
- A Project Reference Group (PRG) is established.
- Operational, educational and service delivery factors are understood and considered by the PRG.
 - A series of preliminary master plan options are considered along with the educational concept and design for the school.
 - A preferred concept design option is identified.
- Once a preferred option is identified approval is needed in order to progress from planning through to project delivery.



Delivery

- The construction works program to deliver the upgrade to the school is developed in collaboration with the school and where appropriate, the local community.
- Ongoing consultation with Principal, staff and other school users.
- Throughout detailed design and construction updates are provided to the local community.

Approvals

- Workshops continue with school and local community to understand challenges and constraints and identify future requirements.
- Engagement of technical specialists, local councils and other government agencies.
- Statutory planning approval process.
- Opportunity for local community to view and provide feedback upon submission of the Development Application.
- Scope of work and concept design is further defined.

For more information contact:

School Infrastructure NSW
 Email: schoolinfrastructure@det.nsw.edu.au
 Phone: 1300 482 651
www.schoolinfrastructure.nsw.gov.au