

AMENDING DEVELOPMENT APPLICATION, WESTMEAD LOT 4

Residential Development

3 Farmhouse Road Westmead formerly known as

158 – 164 Hawkesbury Rd & 1/2A Darcy Rd, Westmead

September 2021



SERIES	Drawing No.	Drawing Name	Scale	Revision
000 General	DA-001-000	Title Sheet		02
100 Site Plan	DA-100-010	Site Analysis Plan	1:500	01
	DA-100-020	Site Plan	1:500	01
110 GA Plans	DA-105-B01	Basement 01	1:200	02
	DA-105-B03	Basement 02-03	1:200	02
	DA-105-B04	Basement 04	1:200	02
	DA-110-001	Lower Ground Floor	1:200	01
	DA-110-002	Ground Floor	1:200	01
	DA-110-010	Level 01	1:200	01
	DA-110-020	Level 02	1:200	01
	DA-110-030	Level 03	1:200	01
	DA-110-040	Level 04	1:200	01
	DA-110-050	Level 05	1:200	01
	DA-110-060	Level 06	1:200	01
	DA-110-070	Level 07	1:200	01
	DA-110-080	Level 08	1:200	01
	DA-110-090	Level 09	1:200	01
	DA-110-100	Level 10	1:200	02
	DA-110-110	Level 11-12	1:200	02
	DA-110-130	Level 13	1:200	02
	DA-110-140	Level 14	1:200	02
	DA-110-150	Level 15	1:200	02
	DA-110-160	Level 16-17	1:200	01
	DA-110-180	Level 18-19	1:200	01
	DA-110-200	Level 20-22	1:200	01
	DA-110-230	Level 23	1:200	01
	DA-110-240	Level 24 Plant and Roof	1:200	02
	DA-110-250	Roof Plan	1:200	02
120 Adaptable + Livable Apartment Plans	DA-120-001	Adaptable Apartment Plans		01
	DA-120-002	Livable Apartment Plans		01
210 GA Elevations	DA-210-001	North Elevation	1:200	02
	DA-210-002	East Elevation	1:200	02
	DA-210-003	South Elevation	1:200	02
	DA-210-004	West Elevation	1:200	02
310 GA Sections	DA-310-001	Section A-A	1:200	02
	DA-310-002	Section B-B	1:200	02
	DA-310-003	Section C-C	1:200	02
710 Shadow Diagrams	DA-710-001	June 21 9am	1:1000	02
	DA-710-002	June 21 12pm	1:1000	02
	DA-710-003	June 21 3pm	1:1000	02
	DA-710-004	Sun Eye View Diagram 01		02
	DA-710-005	Sun Eye View Diagram 02		02
720 Solar and Cross Ventilation Diagrams	DA-720-001	Cross Ventilation Diagrams Sheet 1	1:500	01
	DA-720-002	Cross Ventilation Diagrams Sheet 2	1:500	01
	DA-720-003	Cross Ventilation Diagrams Sheet 3	1:500	01
	DA-720-005	Solar Diagrams Sheet 1	1:500	01
	DA-720-006	Solar Diagrams Sheet 2	1:500	01
	DA-720-007	Solar Diagrams Sheet 3	1:500	01
	DA-720-008	Solar Diagrams Sheet 4	1:500	02
	DA-720-009	Solar Diagrams Sheet 5	1:500	02
730 Amenity Diagrams	DA-730-001	Lot 4 Communal Open Area	1:500	02
	DA-730-002	Lot 5 Comparative Solar Analysis	1:500	02
740 GFA Diagrams	DA-740-001	GFA by Building Diagrams 01	1:500	01
	DA-740-002	GFA by Building Diagrams 02	1:500	01
	DA-740-003	GFA by Building Diagrams 03	1:500	01
	DA-740-004	GFA by Building Diagrams 04	1:500	01
	DA-740-005	GFA by Building Diagrams 05	1:500	01
	DA-745-001	GFA by FSR Diagrams 01	1:500	01
	DA-745-002	GFA by FSR Diagrams 02	1:500	01
	DA-745-003	GFA by FSR Diagrams 03	1:500	01
	DA-745-004	GFA by FSR Diagrams 04	1:500	01
	DA-745-005	GFA by FSR Diagrams 05	1:500	01
750 Additional Diagrams	DA-750-001	Masterplan Height Diagram		02
915-900 3D Views	DA-900-001	Perspective Images 1		01
	DA-900-002	Perspective Images 2		01
	DA-900-003	Perspective Images 3		01
990 Materials Board	DA-990-002	Materials and Finishes D		01

NOTES  
THIS DRAWING IS THE COPYRIGHT © OF TURNER. NO REPRODUCTION WITHOUT PERMISSION. UNLESS NOTED OTHERWISE THIS  
DRAWING IS NOT FOR CONSTRUCTION. ALL DIMENSIONS AND LEVELS ARE TO BE CHECKED ON SITE PRIOR TO THE COMMENCEMENT  
OF WORK. INFORM TURNER OF ANY DISCREPANCIES FOR CLARIFICATION BEFORE PROCEEDING WITH WORK. DRAWINGS ARE NOT TO  
BE SCALED. USE ONLY DIMENSIONS. REFER TO CONSULTANT DOCUMENTATION FOR FURTHER INFORMATION.

DL020 Quality Endorsed Company ISO 9001:2015, Registration Number 25475  
Notified Architect Notified Engineer 8895, AEN 08 054 004 911

KEY PLAN

LEGEND

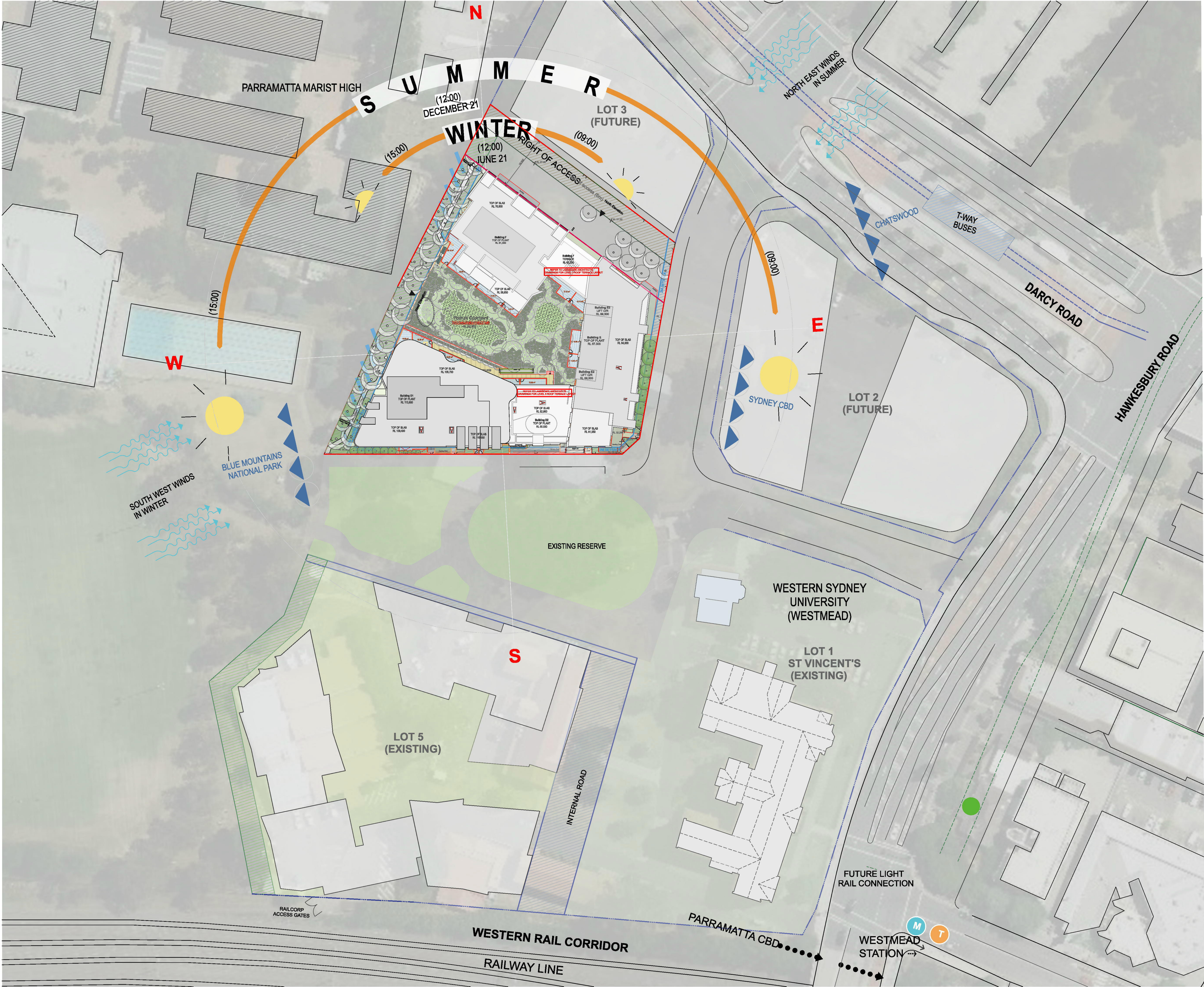
Rev	Issue date	Approved By	Revision Notes
01	10/09/21	JMC	Amending DA
02	11/02/22	JMC	Amending DA - DEAP Responses

CLIENT  
**Deicorp**  
Level 3, 161 Redfern Street, Redfern  
NSW 2016, Australia

Project Title  
**WSU - Lot 4**  
3 Farmhouse Road Westmead formerly known as 158 – 164 Hawkesbury Rd  
& 1/2A Darcy Rd Westmead NSW 2145 Australia

Drawing Title			
<b>General Title Sheet</b>			
Scale	Project No.	Drawn by	North
@A1, 90% <b>@A3</b>	<b>20036</b>	<b>JE / SE</b>	
Status	Dwg No.	Rev	
For Information	<b>DA-001-000</b>	<b>02</b>	





NOTES  
THIS DRAWING IS THE COPYRIGHT & OF TURNER. NO REPRODUCTION WITHOUT PERMISSION. UNLESS NOTED OTHERWISE THIS  
DRAWING IS NOT FOR CONSTRUCTION. ALL DIMENSIONS AND LEVELS ARE TO BE CHECKED ON SITE. PRIOR TO THE COMMENCEMENT  
OF WORK. INFORM TURNER OF ANY DISCREPANCIES FOR CLARIFICATION BEFORE PROCEEDING WITH WORK. DRAWINGS ARE NOT TO  
BE SCALED. USE ONLY PROVIDED DIMENSIONS. REFER TO CONSULTANT DOCUMENTATION FOR FURTHER INFORMATION.

DA-100-010  
Turner Architect  
November 2016  
AS/NZS 1824:2015

KEY PLAN

LEGEND

LEGEND

Light Rail Station  
(future)

T-Way Bus Stop

Views

Prevailing Winds

Privacy Issues

Lot 4 Site Boundary

Westmead Train Station  
(existing)

Westmead Metro Station  
(future)

NOTE:

LOT 2 & 3 INDICATIVE BUILDING ENVELOPES SHOWN

LOT 5 BUILDING FORMS BASED ON RESPONSE TO DEAP MEETING  
14/06/2016

Rev	Issue date	Approved By	Revision Notes
01	10/09/21	JMC	Amending DA

CLIENT  
**Deicorp**  
Level 3, 161 Redfern Street, Redfern  
NSW 2016, Australia

Project Title  
**WSU - Lot 4**  
3 Farmhouse Road Westmead formerly known as 158 - 164 Hawkesbury Rd  
& 1/2A Darcy Rd Westmead NSW 2145 Australia

Drawing Title

**Site Plan  
Site Analysis Plan**

Scale

1:500 @A1, 50% @A3

Status

For Information

Project No.

20036

Drawn by

JE / SE

Rev

01

**TURNER**

L.T. ONE Oakleaf Street  
Darlinghurst NSW 2010  
Australia

T +61 2 8008 0000  
F +61 2 8008 0008  
turner@turner.com.au





DLCS Quality Endorsed Company ISO 9001:2008, Registration Number 20478  
Nominated Architect Nicholas Turner 6695, AGN 06 064 064 911

## KEY PLAN

## LEGEND



### Westmead Railway Station



Future Light Rail Station



### Two-Way Bus Stop



### Lobby Entry



### Carpark Entry



#### Plot 4 Site Boundary



### Existing Tree to be Removed

Rev	Issue date	Approved By	Revision Notes
01	10/09/21	JMC	Amending DA

CLIENT  
**Deicorp**  
Level 3, 161 Redfern Street, Redfern  
NSW 2016, Australia

Project Title

**WSU - Lot 4**

3 Farmhouse Road Westmead formerly known as 158 – 164 Hawkesbury Rd  
& 1/2A Darcy Rd Westmead NSW 2145 Australia

Drawing Title  
**Site Plan**  
**Site Plan**

Scale  
1:500 @A1, 50% @A3  
Status  
For Information

Project No. **20036**  
 Log No. **DA-100-020**



**TURNER**

4E Oxford Street  
Sydney NSW 2010  
Australia

888 0000  
888 0088  
dia.com.au





NOTES  
THIS DRAWING IS THE COPYRIGHT & OF TURNER. NO REPRODUCTION WITHOUT PERMISSION. UNLESS NOTED OTHERWISE THIS  
DRAWING IS NOT FOR CONSTRUCTION. ALL DIMENSIONS AND LEVELS ARE TO BE CHECKED ON SITE PRIOR TO THE COMMENCEMENT  
OF WORK. IF ANY DISCREPANCIES FOR CLARIFICATION BEFORE PROCEEDING WITH WORK, DRAWINGS ARE NOT TO  
BE USED. USE ONLY PROVIDED DIMENSIONS. REFER TO CONSULTANT DOCUMENTATION FOR FURTHER INFORMATION.

DL23 Quality Endorsed Company ISO 9001:2015, Registration Number 25475  
Notified Architect Notified Planner 8895, AEN 08 084 084 911

KEY PLAN

LEGEND

GENERAL ARRANGEMENT PLANS LEGEND  
NOTE: WHERE NOMINATED ON DRAWINGS OR SCHEDULES  
A NUMERICAL SUFFIX INDICATES MULTIPLE TYPES (E.G.  
BALCONY TERRACE TYPE 1, ETC. REFER TO  
ARCHITECTURAL SCHEDULES FOR FURTHER INFORMATION

AC	Air Conditioning		STUDIO
ACC	Accommodation		
ADP	Adaptation		1 BEDROOM UNIT
AHD	Australian Height Datum		
B	Bedroom		
B1, 2	Bedroom 1, Bedroom 2, etc.		
BAL	Balcony		2 BEDROOM UNIT
B1, 2	Balcony 1, Balcony 2, etc.		
BWR	Bioplastic		3 BEDROOM UNIT
BWR	Bioplastic		
BWR	Bioplastic		
BWR	Bioplastic		
BWR	Bioplastic		
BWR	Bioplastic		
BWR	Bioplastic		
BWR	Bioplastic		
BWR	Bioplastic		
BWR	Bioplastic		
BWR	Bioplastic		
BWR	Bioplastic		
BWR	Bioplastic		
BWR	Bioplastic		
BWR	Bioplastic		
BWR	Bioplastic		
BWR	Bioplastic		
BWR	Bioplastic		
BWR	Bioplastic		
BWR	Bioplastic		
BWR	Bioplastic		
BWR	Bioplastic		
BWR	Bioplastic		
BWR	Bioplastic		
BWR	Bioplastic		
BWR	Bioplastic		
BWR	Bioplastic		
BWR	Bioplastic		
BWR	Bioplastic		
BWR	Bioplastic		
BWR	Bioplastic		
BWR	Bioplastic		
BWR	Bioplastic		
BWR	Bioplastic		
BWR	Bioplastic		
BWR	Bioplastic		
BWR	Bioplastic		
BWR	Bioplastic		
BWR	Bioplastic		
BWR	Bioplastic		
BWR	Bioplastic		
BWR	Bioplastic		
BWR	Bioplastic		
BWR	Bioplastic		
BWR	Bioplastic		
BWR	Bioplastic		
BWR	Bioplastic		
BWR	Bioplastic		
BWR	Bioplastic		
BWR	Bioplastic		
BWR	Bioplastic		
BWR	Bioplastic		
BWR	Bioplastic		
BWR	Bioplastic		
BWR	Bioplastic		
BWR	Bioplastic		
BWR	Bioplastic		
BWR	Bioplastic		
BWR	Bioplastic		
BWR	Bioplastic		
BWR	Bioplastic		
BWR	Bioplastic		
BWR	Bioplastic		
BWR	Bioplastic		
BWR	Bioplastic		
BWR	Bioplastic		
BWR	Bioplastic		
BWR	Bioplastic		
BWR	Bioplastic		
BWR	Bioplastic		
BWR	Bioplastic		
BWR	Bioplastic		
BWR	Bioplastic		
BWR	Bioplastic		
BWR	Bioplastic		
BWR	Bioplastic		
BWR	Bioplastic		
BWR	Bioplastic		
BWR	Bioplastic		
BWR	Bioplastic		
BWR	Bioplastic		
BWR	Bioplastic		
BWR	Bioplastic		
BWR	Bioplastic		
BWR	Bioplastic		
BWR	Bioplastic		
BWR	Bioplastic		
BWR	Bioplastic		
BWR	Bioplastic		
BWR	Bioplastic		
BWR	Bioplastic		
BWR	Bioplastic		
BWR	Bioplastic		
BWR	Bioplastic		
BWR	Bioplastic		
BWR	Bioplastic		
BWR	Bioplastic		
BWR	Bioplastic		
BWR	Bioplastic		
BWR	Bioplastic		
BWR	Bioplastic		
BWR	Bioplastic		
BWR	Bioplastic		
BWR	Bioplastic		
BWR	Bioplastic		
BWR	Bioplastic		
BWR	Bioplastic		
BWR	Bioplastic		
BWR	Bioplastic		
BWR	Bioplastic		
BWR	Bioplastic		
BWR	Bioplastic		
BWR	Bioplastic		
BWR	Bioplastic		
BWR	Bioplastic		
BWR	Bioplastic		
BWR	Bioplastic		
BWR	Bioplastic		
BWR	Bioplastic		
BWR	Bioplastic		
BWR	Bioplastic		
BWR	Bioplastic		
BWR	Bioplastic		
BWR	Bioplastic		
BWR	Bioplastic		
BWR	Bioplastic		
BWR	Bioplastic		
BWR	Bioplastic		
BWR	Bioplastic		
BWR	Bioplastic		
BWR	Bioplastic		
BWR	Bioplastic		
BWR	Bioplastic		
BWR	Bioplastic		
BWR	Bioplastic		
BWR	Bioplastic		
BWR	Bioplastic		
BWR	Bioplastic		
BWR	Bioplastic		
BWR	Bioplastic		
BWR	Bioplastic		
BWR	Bioplastic		
BWR	Bioplastic		
BWR	Bioplastic		
BWR	Bioplastic		
BWR	Bioplastic		
BWR	Bioplastic		
BWR	Bioplastic		
BWR	Bioplastic		
BWR	Bioplastic		
BWR	Bioplastic		
BWR	Bioplastic		
BWR	Bioplastic		
BWR	Bioplastic		
BWR	Bioplastic		
BWR	Bioplastic		
BWR	Bioplastic		
BWR	Bioplastic		
BWR	Bioplastic		
BWR	Bioplastic		
BWR	Bioplastic		
BWR	Bioplastic		
BWR	Bioplastic		
BWR	Bioplastic		
BWR	Bioplastic		
BWR	Bioplastic		
BWR	Bioplastic		
BWR	Bioplastic		
BWR	Bioplastic		
BWR	Bioplastic		
BWR	Bioplastic		
BWR	Bioplastic		
BWR	Bioplastic		
BWR	Bioplastic		
BWR	Bioplastic		
BWR	Bioplastic		
BWR	Bioplastic		
BWR	Bioplastic		
BWR	Bioplastic		
BWR	Bioplastic		
BWR	Bioplastic		
BWR	Bioplastic		
BWR	Bioplastic		
BWR	Bioplastic		
BWR	Bioplastic		
BWR	Bioplastic		
BWR	Bioplastic		
BWR	Bioplastic		
BWR	Bioplastic		
BWR	Bioplastic		
BWR	Bioplastic		
BWR	Bioplastic		
BWR	Bioplastic		
BWR	Bioplastic		
BWR	Bioplastic		
BWR	Bioplastic		
BWR	Bioplastic		
BWR	Bioplastic		
BWR	Bioplastic		
BWR	Bioplastic		
BWR	Bioplastic		
BWR	Bioplastic		
BWR	Bioplastic		
BWR	Bioplastic		
BWR	Bioplastic		
BWR	Bioplastic		
BWR	Bioplastic		
BWR	Bioplastic		
BWR	Bioplastic		
BWR	Bioplastic		
BWR	Bioplastic		
BWR	Bioplastic		
BWR	Bioplastic		
BWR	Bioplastic		
BWR	Bioplastic		
BWR	Bioplastic		
BWR	Bioplastic		
BWR	Bioplastic		
BWR	Bioplastic		
BWR	Bioplastic		
BWR	Bioplastic		
BWR	Bioplastic		
BWR	Bioplastic		
BWR	Bioplastic		
BWR	Bioplastic		
BWR	Bioplastic		
BWR	Bioplastic		
BWR	Bioplastic		
BWR	Bioplastic		
BWR	Bioplastic		
BWR	Bioplastic		
BWR	Bioplastic		
BWR	Bioplastic		
BWR	Bioplastic		
BWR	Bioplastic		
BWR	Bioplastic		
BWR	Bioplastic		
BWR	Bioplastic		
BWR	Bioplastic		
BWR	Bioplastic		
BWR	Bioplastic		
BWR	Bioplastic		
BWR	Bioplastic		
BWR	Bioplastic		
BWR	Bioplastic		
BWR	Bioplastic		
BWR	Bioplastic		
BWR	Bioplastic		
BWR	Bioplastic		
BWR	Bioplastic		
BWR	Bioplastic		
BWR	Bioplastic		
BWR	Bioplastic		
BWR	Bioplastic		
BWR	Bioplastic		
BWR	Bioplastic		
BWR	Bioplastic		
BWR	Bioplastic		
BWR	Bioplastic		





BAL1	Balustrade Type 1: Semi-Framedless clear glass balustrade. Framing system, finish similar to PF1	BRK1	Brick Type 1: Face brick similar in colour to Bownsl 'Chillingham White'	CL2	Cladding Type 2: Metal cladding, colour similar to PF2	GT2	Glass, Translucent, Type 2: Glass, Translucent, to Basix and Acoustic report requirements. Aluminium framing system, finish similar to PF3	PC1	Precast Concrete Type 1: Precast Concrete. Finish: penetrating low maintenance stain finish equal to Keim concrete Lasur system, similar to PF1	PF3	Paint Finish Type 3: Paint Finish similar to Dulux 'Flooded Gum'	SC1	Screen Type 1: Aluminium slat fence, finish similar to PF2
BAL2	Balustrade Type 2: Semi-Framedless translucent glass balustrade. Framing system, finish similar to PF5	BRK2	Brick Type 2: Glazed 'face brick to address landscaped areas Colour similar to Austral Bricks Allure-Lu'	CL3	Cladding Type 2: Timber plastic composite cladding, similar to "spotted gum"	GCB1	Glass, Colourback Type 1: Glass, Dark Grey, to Basix and Acoustic report requirements. Aluminium framing system, finish similar to PF5	PC2	Precast Concrete Type 2: Precast Concrete. Finish: penetrating low maintenance stain finish equal to Keim concrete Lasur system, similar to PF4	PF4	Paint Finish Type 4: Finish similar to Dulux 'Black Caviar'	SC2	Screen Type 2: Metal louvered screen at mechanical air intake. Colour to match PF5
BAL3	Balustrade Type 3: Semi-Framedless clear glass balustrade fixed to solid spandrel panel/parapet wall. Framing system, finish similar to PF1	COF1	Concrete, off form Clear finish or to landscape architect's specification	CL4	Cladding Type 4: FC cladding, colour similar to PF4	GCB2	Glass, Colourback Type 2: Glass, Dark Grey, to Basix and Acoustic report requirements. Aluminium framing system, finish similar to PF3	PC3	Precast Concrete Type 3: Vertical Profiled Precast Concrete. Finish: penetrating low maintenance stain finish equal to Keim concrete Lasur system, similar to PF1	PF5	Paint Finish Type 5: Finish similar to Dulux powder coat 'Black Ace'	SC3	Screen Type 3: Metal framed shedding structure with timber battens
BAL4	Balustrade Type 4: Perforated Architectural metal balustrade. Finish similar to PF7 + PF8	GC1	Glass, Clear, Type 1: Glass, clear, to Basix and Acoustic report requirements. Aluminium framing system, finish similar to PF5	CL5	Cladding Type 5: Metal cladding, colour similar to PF8	LV1	Louvre Type 1: Fixed vertical louvre system. Aluminium, finish similar to PF2	PC4	Precast Concrete Type 4: Natural Concrete. Finish with horizontal dummy joints	PF6	Paint Finish Type 6: Finish similar to Dulux 'Harold'	SC4	Screen Type 4: Vertical aluminium screen, finish to match PF5
BAL5	Balustrade Type 5: Fixed vertical metal fins. Finish similar to PF8	GC2	Glass, Clear, Type 2: Glass, clear, to Basix and Acoustic report requirements. Aluminium framing system, finish similar to PF3	CL6	Cladding Type 6: Metal cladding, colour similar to PF7	LV2	Louvre Type 2: Fixed vertical louvre system. Aluminium, finish similar to PF5	PF1	Paint Finish Type 1: Natural White Finish similar to Dulux 'Natural White'	PF7	Paint Finish Type 7: Finish similar to Dulux Electro 'scintillation' powder coat	SC5	Screen Type 5: Metal louvered screen at mechanical air intake. Colour to match PF1
		CL1	Cladding Type 1: Metal cladding, colour similar to PF5	GT1	Glass, Translucent, Type 1: Glass, Translucent, to Basix and Acoustic report requirements. Aluminium framing system, finish similar to PF3	LV3	Louvre Type 3: Fixed vertical louvre system. Aluminium, finish similar to PF8	PF2	Paint Finish Type 2: Finish similar to Dulux 'Flat White' powder coat	PF8	Paint Finish Type 8: Finish similar to Dulux Electro 'Shimmering Champagne' powder coat	SC6	Screen Type 6: Metal louvered screen at mechanical air intake. Colour to match PF5

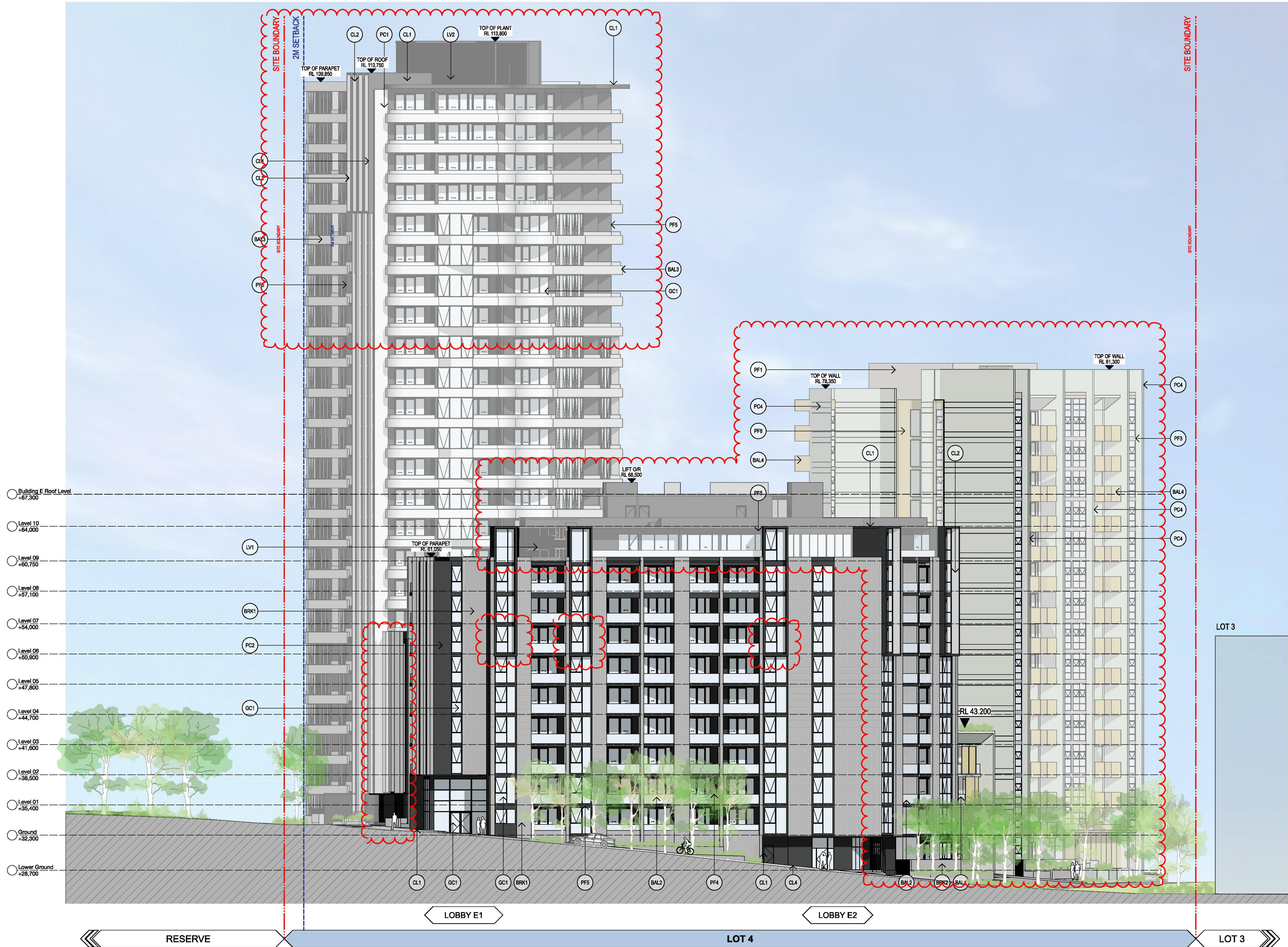


NOTES  
THIS DRAWING IS THE COPYRIGHT OF TURNER. NO REPRODUCTION WITHOUT PERMISSION. UNLESS NOTED OTHERWISE THIS  
DRAWING IS NOT FOR CONSTRUCTION. ALL DIMENSIONS AND LEVELS ARE TO BE CHECKED ON SITE PRIOR TO THE COMMENCEMENT  
OF WORK. INFORM TURNER OF ANY DISCREPANCIES FOR CLARIFICATION BEFORE PROCEEDING WITH WORK. DRAWINGS ARE NOT TO  
BE SCALED. USE ONLY PROVIDED DIMENSIONS. REFER TO CONSULTANT DOCUMENTATION FOR FURTHER INFORMATION.

DL020 Quality Information Company (EO) 9001:2008, Registration Number 28475  
Notified Architect Notified Engineer 8895, AEN 08 084 004 911

KEY PLAN

LEGEND



Rev	Issue date	Approved By	Revision Notes
01	10/08/21	JMC	Amending DA
02	11/02/22	JMC	Amending DA - DEAP Responses

CLIENT  
**Deicorp**  
Level 3, 161 Redfern Street, Redfern  
NSW 2016, Australia

Project Title  
**WSU - Lot 4**  
3 Farmhouse Road Westmead formerly known as 158 - 164 Hawkesbury Rd  
& 1/2A Darcy Rd Westmead NSW 2145 Australia

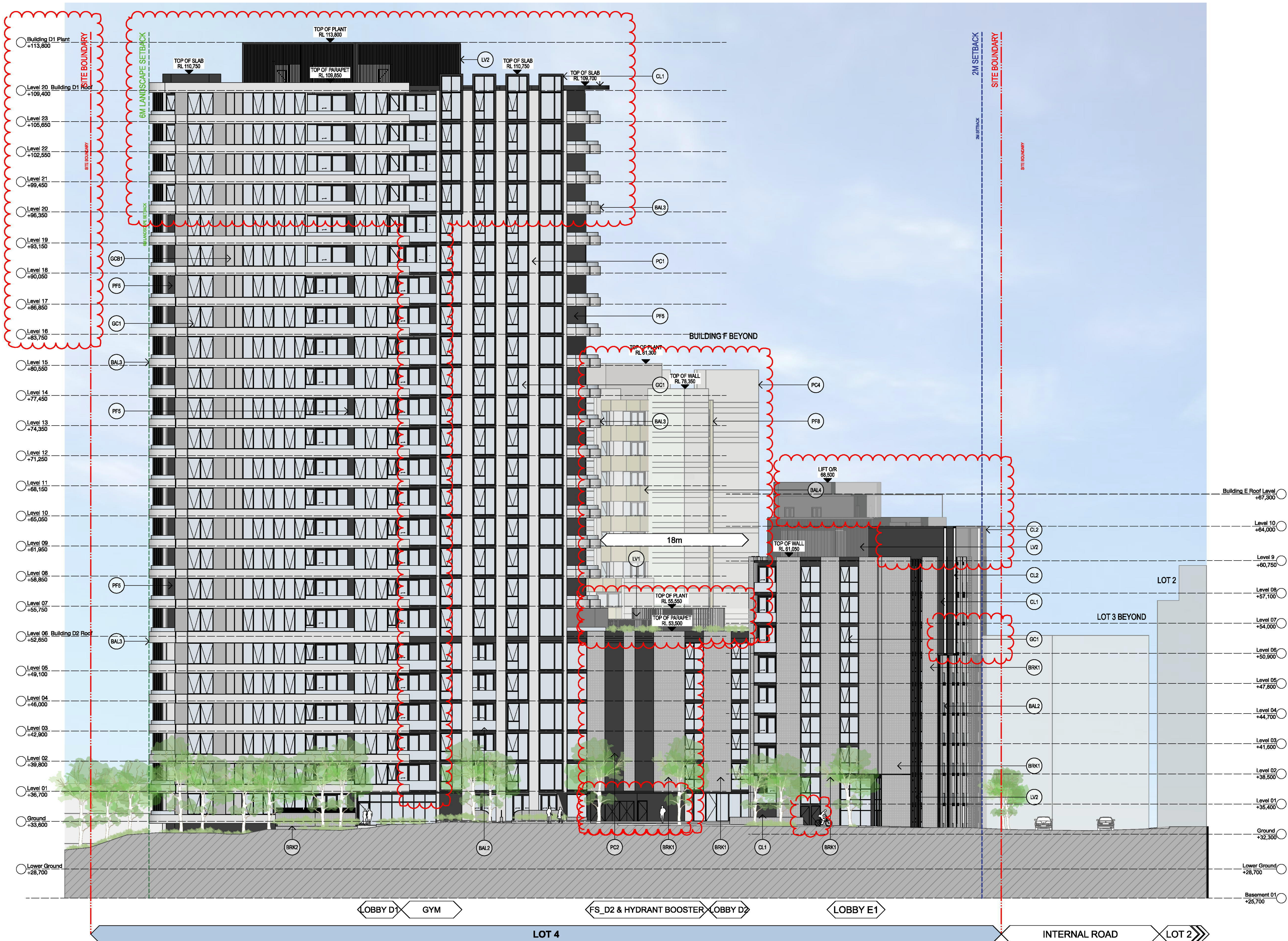
Drawing Title  
**GA Elevations  
East Elevation**

Scale 1:200 @A1, 50%@A3	Project No. <b>20036</b>	Drawn by JE / SE	North
Status For Information	Dwg No. <b>DA-210-002</b>	Rev <b>02</b>	

**TURNER**

L7, ONE Oxford Street  
Sydney NSW 2000  
Australia  
T +61 2 8008 0000  
F +61 2 8008 0088  
turner@turner.com.au





- |  |  |  |  |   |   |  |
|--|--|--|--|---|---|--|
| BAL1 Balustrade Type 1:<br>Semi-Frameless clear glass balustrade.<br>Framing system, finish similar to PF1   | BRK1 Brick Type 1:<br>Face brick similar in colour to Boral's 'Chillingham White'  | CL2 Cladding Type 2:<br>Metal cladding, colour similar to PF2  | GT2 Glass, Translucent, Type 2:<br>Glass, Translucent, to Basix and Acoustic report requirements.<br>Aluminium framing system, finish similar to PF3 | PC1 Precast Concrete Type 1:<br>Precast Concrete. Finish: penetrating low maintenance<br>stain finish equal to Keim concrete Lasur system, similar to PF1                   | PF3 Paint Finish Type 3:<br>Finish similar to Dulux 'Flooded Gum'                                 | SC1 Screen Type 1:<br>Aluminium slat fence, finish similar to PF2                            |
| BAL2 Balustrade Type 2:<br>Semi-Frameless translucent glass balustrade.<br>Framing system, finish similar to PF5   | BRK2 Brick Type 2:<br>Glazed face brick to address landscaped areas<br>Colour similar to Austral Bricks 'Allure-Luk'                     | CL3 Cladding Type 3:<br>Timber plastic composite cladding, similar to 'spotted gum'  | GC1 Glass, Colourback, Type 1:<br>Glass, Dark Grey, to Basix and Acoustic report requirements.<br>Aluminium framing system, finish similar to PF5    | PC2 Precast Concrete Type 2:<br>Precast Concrete. Finish: penetrating low maintenance<br>stain finish equal to Keim concrete Lasur system, similar to PF4                   | PF4 Paint Finish Type 4:<br>Finish similar to Dulux 'Black Caviar'                                | SC2 Screen Type 2:<br>Metal louvered screen at mechanical<br>air intake, colour to match PF5 |
| BAL3 Balustrade Type 3:<br>Semi-Frameless clear glass balustrade fixed to<br>solid spandrel panel/parapet wall. Framing system,<br>finish similar to PF1 | COF1 Concrete, off form<br>Clear finish or to landscape architect's specification  | CL4 Cladding Type 4:<br>FC cladding, colour similar to PF4   | GC2 Glass, Colourback, Type 2:<br>Glass, Dark Grey, to Basix and Acoustic report requirements.<br>Aluminium framing system, finish similar to PF3    | PC3 Precast Concrete Type 3:<br>Vertical Profiled Precast Concrete. Finish: penetrating low maintenance<br>stain finish equal to Keim concrete Lasur system, similar to PF1 | PF5 Paint Finish Type 5:<br>Finish similar to Dulux powder coat 'Black Ace'                       | SC3 Screen Type 3:<br>Metal framed shedding structure with timber battens                    |
| BAL4 Balustrade Type 4:<br>Perforated Architectural metal balustrade. Finish similar to<br>PF7 + PF8   | GC1 Glass, Clear, Type 1:<br>Glass, clear, to Basix and Acoustic report requirements.<br>Aluminium framing system, finish similar to PF5 | CL5 Cladding Type 5:<br>Metal cladding, colour similar to PF8  | LV1 Louvre Type 1:<br>Fixed vertical louvre system. Aluminium, finish similar to PF2   | PC4 Precast Concrete Type 4:<br>Natural Concrete. Finish with horizontal dummy joints   | PF6 Paint Finish Type 6:<br>Finish similar to Dulux 'Harold'                                      | SC4 Screen Type 4:<br>Vertical aluminium screen, finish to match PF5                         |
| BAL5 Balustrade Type 5:<br>Fixed vertical metal fins. Finish similar to PF8  | GC2 Glass, Clear, Type 2:<br>Glass, clear, to Basix and Acoustic report requirements.<br>Aluminium framing system, finish similar to PF3 | CL6 Cladding Type 6:<br>Metal cladding, colour similar to PF7  | LV2 Louvre Type 2:<br>Fixed vertical louvre system. Aluminium, finish similar to PF5   | PF1 Paint Finish Type 1:<br>Natural White<br>Finish similar to Dulux 'Natural White'  | PF7 Paint Finish Type 7:<br>Finish similar to Dulux Electro 'scintillation' powder coat           | SC5 Screen Type 5:<br>Metal louvered screen at mechanical<br>air intake, colour to match PF1 |
|  | CL1 Cladding Type 1:<br>Metal cladding, colour similar to PF5  | GT1 Glass, Translucent, Type 1:<br>Glass, Translucent, to Basix and Acoustic report requirements.<br>Aluminium framing system, finish similar to PF5 | LV3 Louvre Type 3:<br>Fixed vertical louvre system. Aluminium, finish similar to PF8   | PF2 Paint Finish Type 2:<br>Finish similar to Dulux 'Flat White' powder coat  | PF8 Paint Finish Type 8:<br>Finish similar to Dulux Electro 'Shimmering<br>Champagne' powder coat | SC6 Screen Type 6:<br>Metal louvered screen at mechanical<br>air intake, colour to match PF6 |

NOTES  
THIS DRAWING IS THE COPYRIGHT OF TURNER. NO REPRODUCTION WITHOUT PERMISSION. UNLESS NOTED OTHERWISE THIS  
DRAWING IS NOT FOR CONSTRUCTION. ALL DIMENSIONS AND LEVELS ARE TO BE CHECKED ON SITE PRIOR TO THE COMMENCEMENT  
OF WORK. INFORM TURNER OF ANY DISCREPANCIES FOR CLARIFICATION BEFORE PROCEEDING WITH WORK. DRAWINGS ARE NOT TO  
BE SCALED. USE ONLY PROVIDED DIMENSIONS. REFER TO CONSULTANT DOCUMENTATION FOR FURTHER INFORMATION.

DL020 Quality Endorsed Company ISO 9001:2015, Registration Number 25075  
Notified Architect Notified Engineer 8895, AEN 08 084 004 911

KEY PLAN

LEGEND

Rev	Issue date	Approved By	Revision Notes
01	10/09/21	JMC	Amending DA
02	11/02/22	JMC	Amending DA - DEAP Responses

CLIENT  
**Deicorp**  
Level 3, 161 Redfern Street, Redfern  
NSW 2016, Australia

Project Title  
**WSU - Lot 4**  
3 Farmhouse Road Westmead formerly known as 158 - 164 Hawkesbury Rd  
& 1/2A Darcy Rd Westmead NSW 2145 Australia

Drawing Title  
**GA Elevations  
South Elevation**

Scale 1:200 @A1, 50%@A3	Project No. <b>20036</b>	Drawn by JE / SE	North
Status For Information	Dwg No. <b>DA-210-003</b>	Rev <b>02</b>	

**TURNER**

L7, ONE Oxford Street  
Sydney NSW 2010  
Australia  
T +61 2 8008 0000  
F +61 2 9886 0088  
turner@turner.com.au



