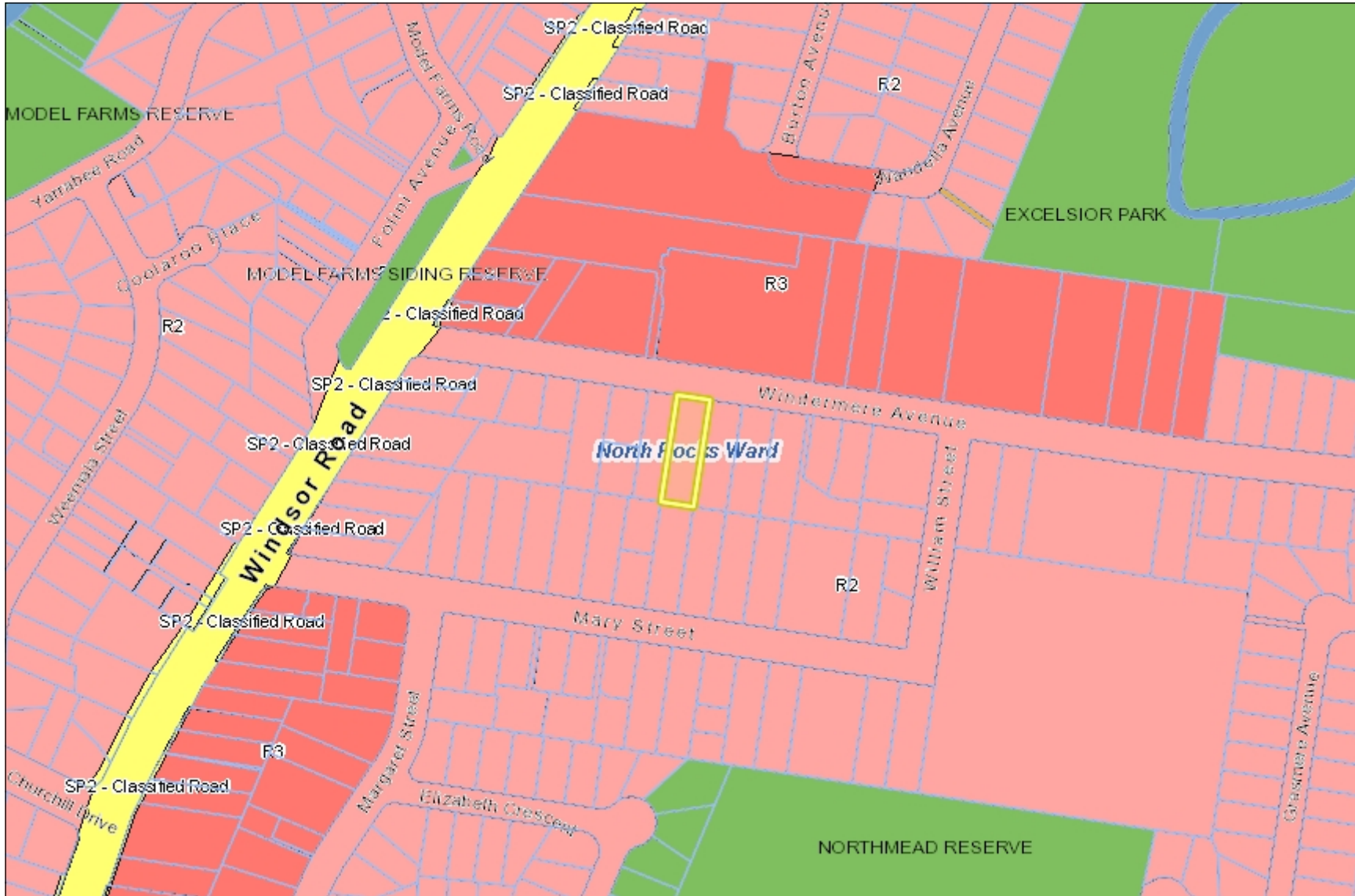
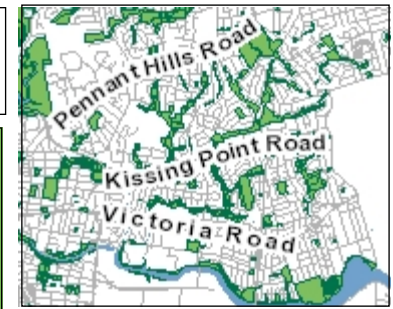




Area Map - 14 Windermere Avenue, Northmead



Legend

- Parcel (NSW Spatial Service)
- Ward Boundary
- Formerly Parramatta City Cour
- Street Names
- Parcel
- Parks
- Railway Station
- Railway Line
- Watercourse
- Zoning (LZN)
 - <all other values>
 - C2 - Environmental Conservation
 - E1 - Local Centre
 - E2 - Commercial Centre
 - E3 - Productivity Support
 - E4 - General Industrial
 - E5 - Heavy Industrial
 - MU1 - Mixed Use
 - R2 - Low Density Residential
 - R3 - Medium Density Residential
 - R4 - High Density Residential
 - RE1 - Public Recreation
 - RE2 - Private Recreation
 - SP1 - Special Activities
 - SP2 - Infrastructure
 - W1 - Natural Waterways
 - W2 - Recreational Waterways

Disclaimer: While every effort has been made to ensure the correctness of the information on this map at the time of its Production, City of Parramatta council does not warrant the information or plans do not contain errors and the Council shall be in no way liable for any loss, damage or injury as a result of any such errors.

1: 3,613



Maps Updated and Published by ICT, City of Parramatta

Base data supplied from NSW Department of Lands
 Projection - Map Grid of Australia (MGA94)
 Datum - Geocentric Datum of Australia (GDA94)

Printed 10/05/2023

