

## Council's Guidelines for Pedestrian Facilities

1. On 22 February 2021, Council adopted interim guidelines for the installation of pedestrian crossings on local roads with speed limits of 50km/h or less within the Parramatta LGA. According to these guidelines, an at-grade pedestrian crossing can be considered in the following circumstances:
  - a. The speed limit in the road is 50km/h or less.
  - b. There is a minimum of 20 pedestrians and/or cyclists crossing the road in a one-hour period on a typical day.
  - c. The Roadway width is less than 6m and the 85<sup>th</sup> percentile speed is less than 40km/h at a distance of 30m from the proposed crossing location.
2. These guidelines were developed following a comprehensive review of relevant Australian Standards, Austroads Guidelines and guidelines used in other state road authorities.
3. Australian Standards advise that where pedestrian crossings are used infrequently by pedestrians, motorists may begin to ignore at-grade facilities which will increase the risk of motorists not detecting pedestrians looking to cross the road.
4. For at-grade crossings, Austroads Guidelines advise that such facilities do not result in any reduction or increase in collisions in Australia, but noted further research was required. Raised pedestrian crossings resulted in a 63% reduction in accidents.
5. It is further noted that in accordance with research (provided by Austroads) conducted on marked pedestrian crossings, it was observed that motorists are much less likely to give way to pedestrians at locations where traffic is travelling at higher speeds then compared to lower speed environments.

## Pedestrian Volumes and Crash History in Hill Road and Adjacent Streets

6. Council previously undertook traffic and pedestrian counts at the intersection of Hill Road and Burroway Road in January 2021. These counts were done on a Saturday and Sunday in order to observe the peak pedestrian periods at the locations that were counted. These counts showed that a maximum of 52 pedestrians crossed the road in a one-hour period at the northern leg of the intersection, however, the vehicle volume for the corresponding time was only 70 vehicles. For the southern leg of the intersection, only 10 pedestrians crossed the road in a one-hour period however, the vehicle volume was much higher with 608 vehicles for the corresponding time. Details of the traffic count are summarised in Figure 7 below.

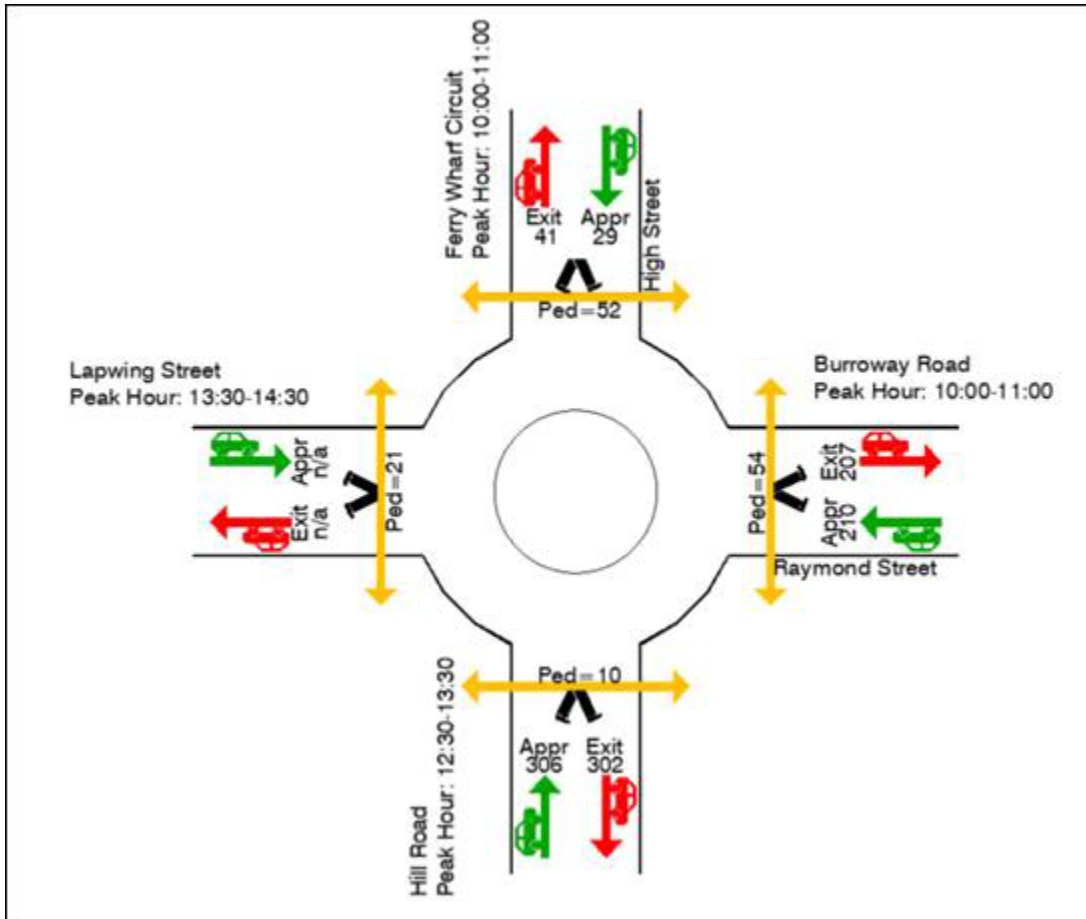
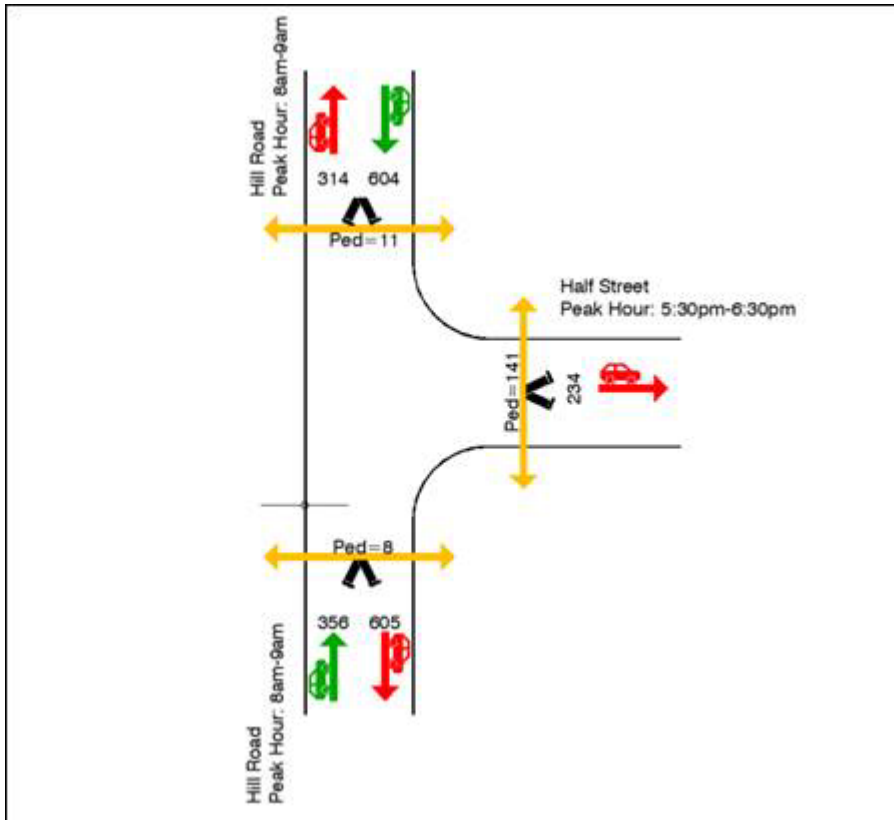


Figure 6: A summary of traffic and pedestrian counts undertaken in January 2021 at the intersection Hill Road, Burroway Road and Lapwing Street, Wentworth Point. It is noted that the pedestrian counts include any cyclists crossing the road.

- In accordance with traffic and pedestrian counts conducted at the intersection of Hill Road and Half Street in February 2023, a maximum of only 11 pedestrians were observed to be crossing the road at the northern leg of the intersection. Details of the traffic count are summarised in Figure 8 below.



*Figure 7: A summary of traffic and pedestrian counts undertaken in February 2023 at the intersection Hill Road and Half Street, Wentworth Point.*

8. A review of the recorded crash history during the five-year period between July 2017 and June 2022 showed that there has been one injury crash 10 meters north of the intersection. This crash involved a northbound vehicle performing a U-turn and colliding with a cyclist.