

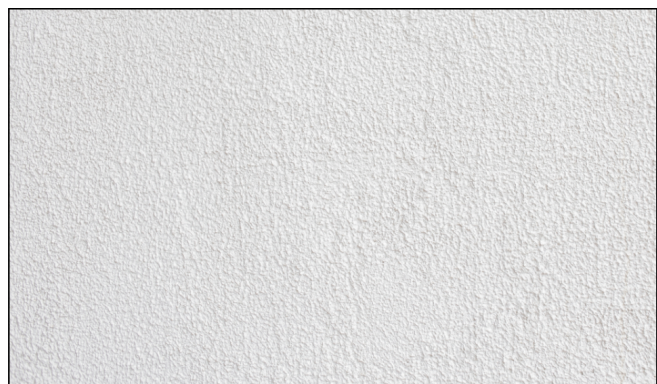


NORTH ELEVATION  
scale 1:100

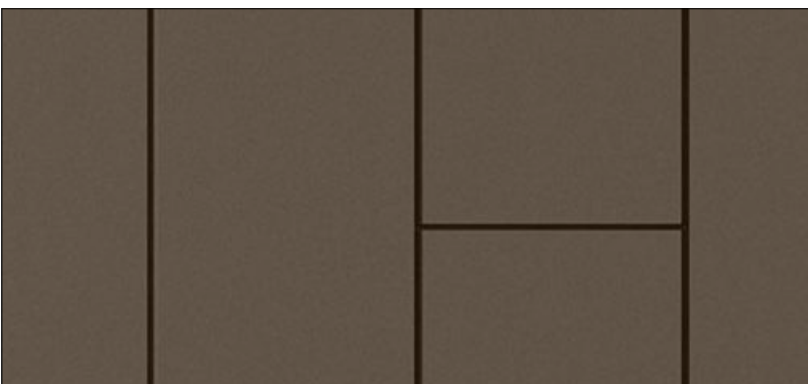


SOUTH ELEVATION  
scale 1:100

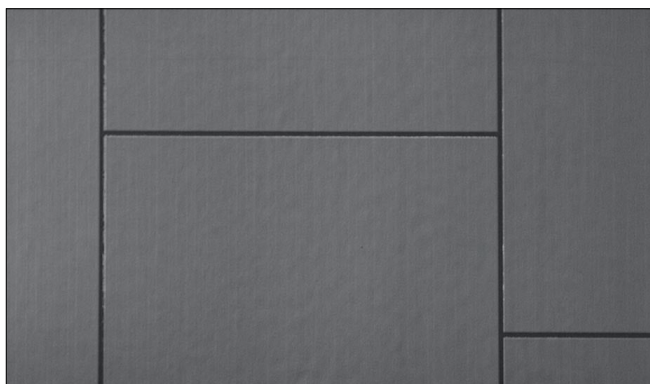
MATERIALS & FINISHES SCHEDULE



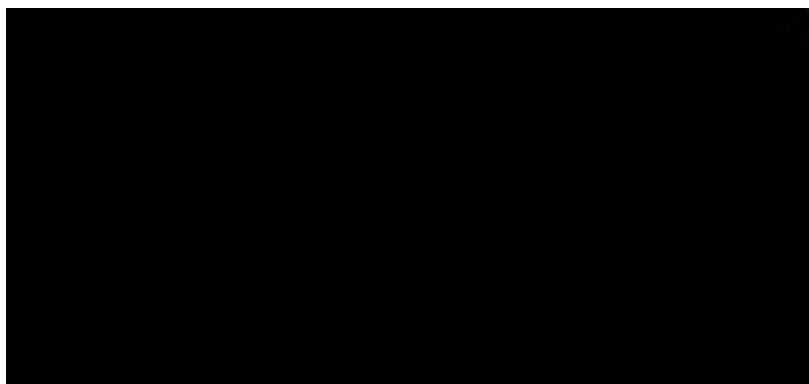
RENDER EXTERIOR WALLS - OFF WHITE



FIBRE CEMENT CLADDING - MOCHA METALLIC



FIBRE CEMENT CLADDING - CHARCOAL METALLIC 502



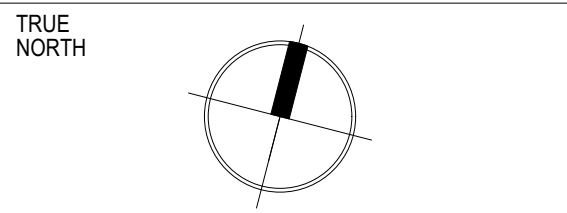
BLACK POWDER COAT FINISH - WINDOW/DOOR FRAMES, LOUVRE SCREEN, PALISADE FENCING



Nominated Architect  
Adrian Winton NSW Architects Registration Board 5347  
Unit 43 / 2 Slough Avenue, Silverwater, NSW 2128  
admin@idraft.com.au Phone: 02 9648 8848  
www.idraft.com.au

NOTE: All work to be carried out in accordance with BCA, AS & Council's conditions.  
6 COPYRIGHT: The concept & information contained in these drawings are the copyright of IDA Design Group Pty Ltd. Use or duplication in part or in full without written permission from IDA Design Group Pty Ltd constitutes an infringement of copyright.  
Do not scale off architectural drawings. These notes must be read in conjunction with colours selection for additional details on appliances. PC items & shower sized shown on plan are inside hob dimensions shower screens to be fitted on inside of hob bulkheads may be required to accommodate drainage lines & steel beams positions to be determined on site.  
USE FIGURED DIMENSIONS ONLY, DO NOT SCALE: Finished Ground Levels on plans are subject to site conditions, all calculated dimensions are subject to site measure during construction & no allowance has been made for shrinkage or milling position of electrical meter to be determined on site on accordance to the correct position front garden tap on meter.  
ENERGY SMART DESIGN: AAA rated water conservation devices include rainwater tanks shower heads, water taps flow regulators, dual flush toilets dislens & compliant hot water systems with minimum green house score of 3 stars are to be used in this development. Occupants are encouraged to use AAA rated dish washing machines with front loading where possible.  
DO NOT SCALE OFF ARCHITECTURAL DRAWINGS

AMENDMENTS		
REV	DATE	DESCRIPTION
A	22/12/2021	SUBMITTED DA TO COUNCIL
B	7/12/2022	SUBMITTED ADDITIONAL INFORMATION



STAMP  
NOT TO BE USED DURING CONSTRUCTION  
PAGE| SCALE  
A1 | 1:100

CLIENT  
INFINITY IDEAS PTY LTD

PROJECT  
RESIDENTIAL FLAT BUILDING

ADDRESS  
2-4 BOUNDARY ST & 85 RAILWAY ST,  
PARRMATT

LOCAL COUNCIL  
CITY OF PARRAMATTA COUNCIL

DRAWING  
ELEVATIONS

PROJECT NUMBER 28806	DATE: 7/12/2022
DRAWN BY: MT	DESIGNED BY: AW
ISSUED FOR: DA	

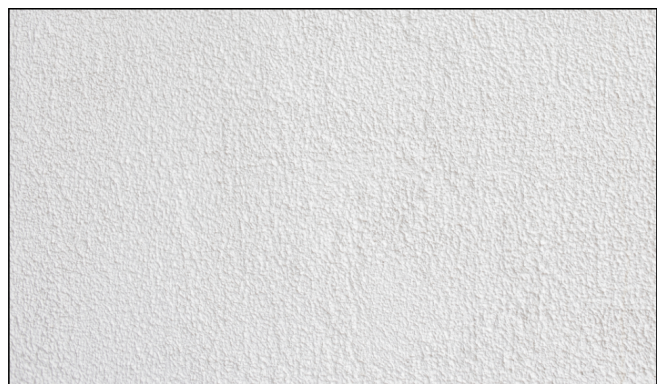
DRAWING NUMBER  
2001  
ISSUE  
B



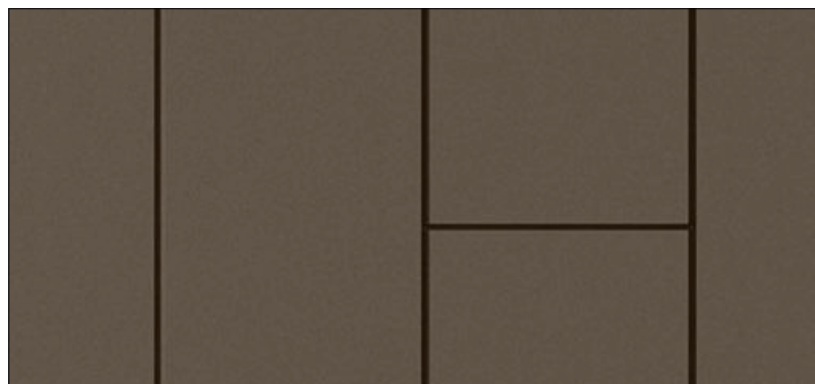
AMENDMENTS		
REV	DATE	DESCRIPTION
A	22/12/2021	SUBMITTED DA TO COUNCIL
B	7/12/2022	SUBMITTED ADDITIONAL INFORMATION



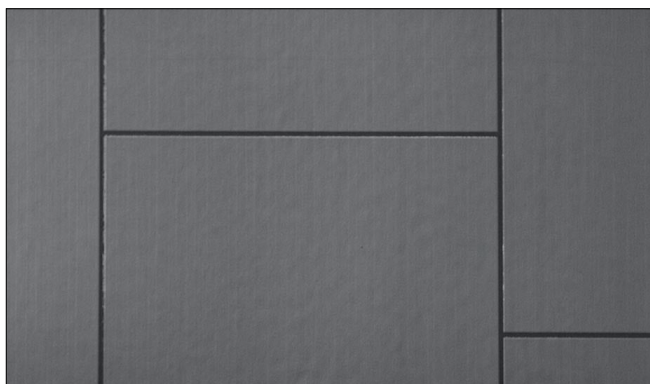
**MATERIALS & FINISHES SCHEDULE**



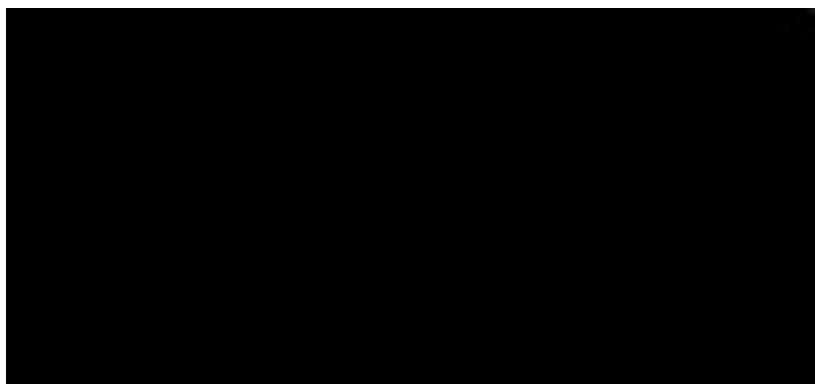
RENDER EXTERIOR WALLS - OFF WHITE



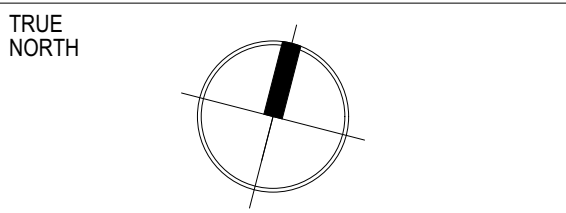
FIBRE CEMENT CLADDING - MOCHA METALLIC



FIBRE CEMENT CLADDING - CHARCOAL METALLIC 502



BLACK POWDER COAT FINISH - WINDOW/DOOR FRAMES, LOUVRE SCREEN, PALISADE FENCING



**STAMP**  
NOT TO BE USED DURING CONSTRUCTION

PAGE/ SCALE  
A1 | 1:100

CLIENT  
INFINITY IDEAS PTY LTD

PROJECT  
RESIDENTIAL FLAT BUILDING

ADDRESS  
2-4 BOUNDARY ST & 85 RAILWAY ST,  
PARRMATT

LOCAL COUNCIL  
CITY OF PARRAMATTA COUNCIL

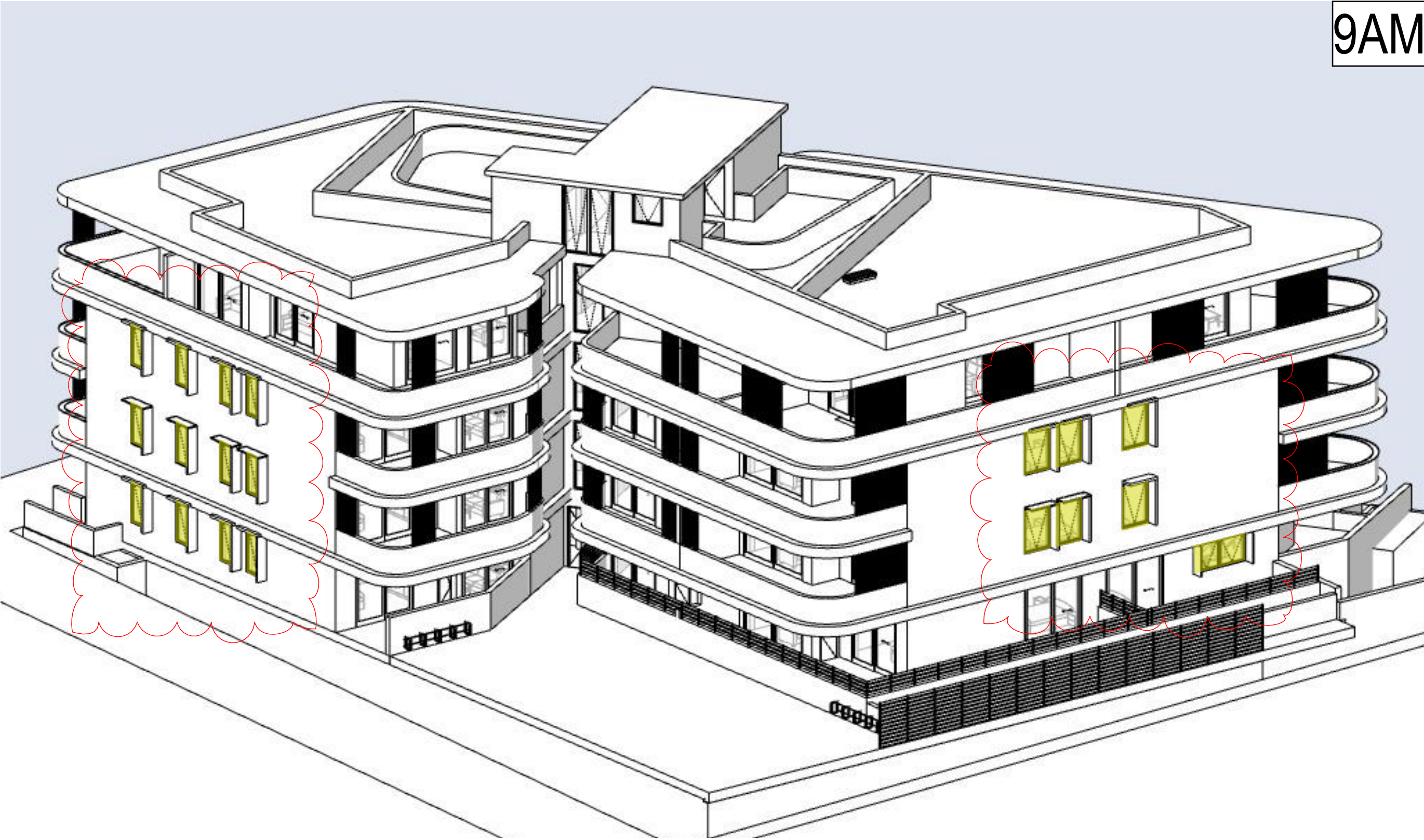
DRAWING  
ELEVATIONS

PROJECT NUMBER 28806	DATE: 7/12/2022
DRAWN BY: MT	DESIGNED BY: AW
ISSUED FOR: DA	

DRAWING NUMBER  
2002

ISSUE  
B

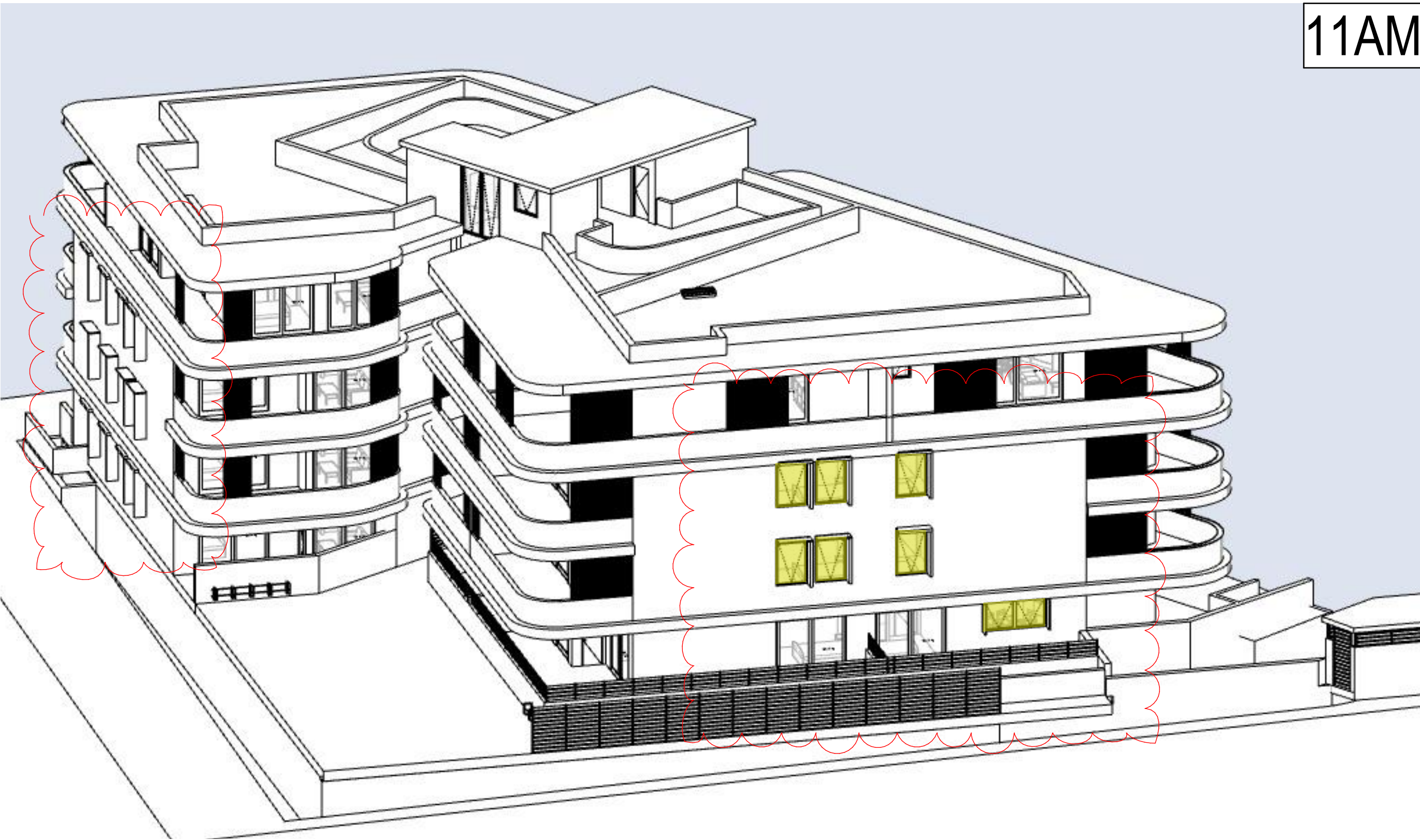




9AM



10AM



11AM



12PM

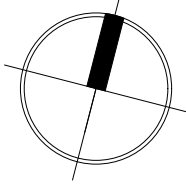


Nominated Architect  
Adrian Winton NSW Architects Registration Board 5347  
Unit 43 / 2 Slough Avenue, Silverwater, NSW 2128 Phone: 02 9648 8848  
admin@idraft.com.au www.idraft.com.au

NOTE: All work to be carried out in accordance with BCA, AS & Council's conditions.  
© COPYRIGHT: The concept & information contained in these drawings are the copyright of IDA Design Group Pty Ltd. Use or duplication in part or in full without written permission from IDA Design Group Pty Ltd constitutes an infringement of copyright.  
Do not scale off architectural drawings. These notes must be read in conjunction with colours selection for additional details on appliances. PC items & shower sized shown on plan are inside hob dimensions shower screens to be fitted on inside of hob bulkheads may be required to accommodate drainage lines & steel beams positions to be determined on site.  
USE FIGURED DIMENSIONS ONLY, DO NOT SCALE: Finished Ground Levels on plans are subject to site conditions, all calculated dimensions are subject to site measure during construction & no allowance has been made for shrinkage or milling position of electrical meter to be determined on site on accordance to the correct position front garden tap on meter.  
ENERGY SMART DESIGN: AAA rated water conservation devices include rainwater tanks shower heads, water taps flow regulators, dual flush toilets disarms & compliant hot water systems with minimum green house score of 3 stars are to be used in this development. Occupants are encouraged to use AAA rated dish washing machines with front loading where possible.  
DO NOT SCALE OFF ARCHITECTURAL DRAWINGS

AMENDMENTS		
REV	DATE	DESCRIPTION
A	22/12/2021	SUBMITTED DA TO COUNCIL
B	7/12/2022	SUBMITTED ADDITIONAL INFORMATION

TRUE NORTH



STAMP  
NOT TO BE USED DURING CONSTRUCTION

PAGE| SCALE  
A1 | 1:100

CLIENT  
INFINITY IDEAS PTY LTD

PROJECT  
RESIDENTIAL FLAT BUILDING

ADDRESS  
2-4 BOUNDARY ST & 85 RAILWAY ST,  
PARRMATT

LOCAL COUNCIL  
CITY OF PARRAMATTA COUNCIL

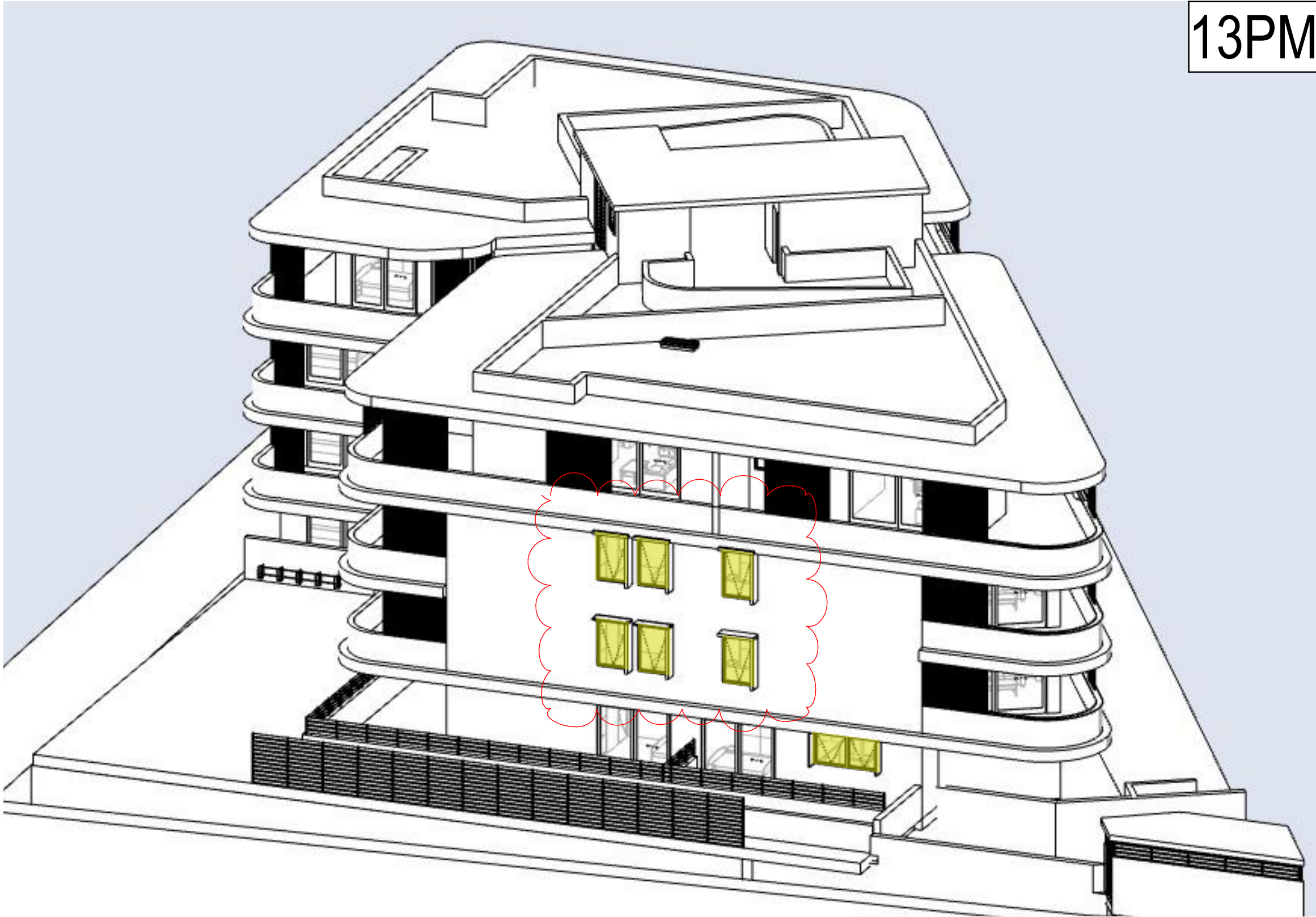
DRAWING  
SUNS EYE DIAGRAM

PROJECT NUMBER 28806	DATE: 7/12/2022
	DRAWN BY: MT
	DESIGNED BY: AW
	ISSUED FOR: DA

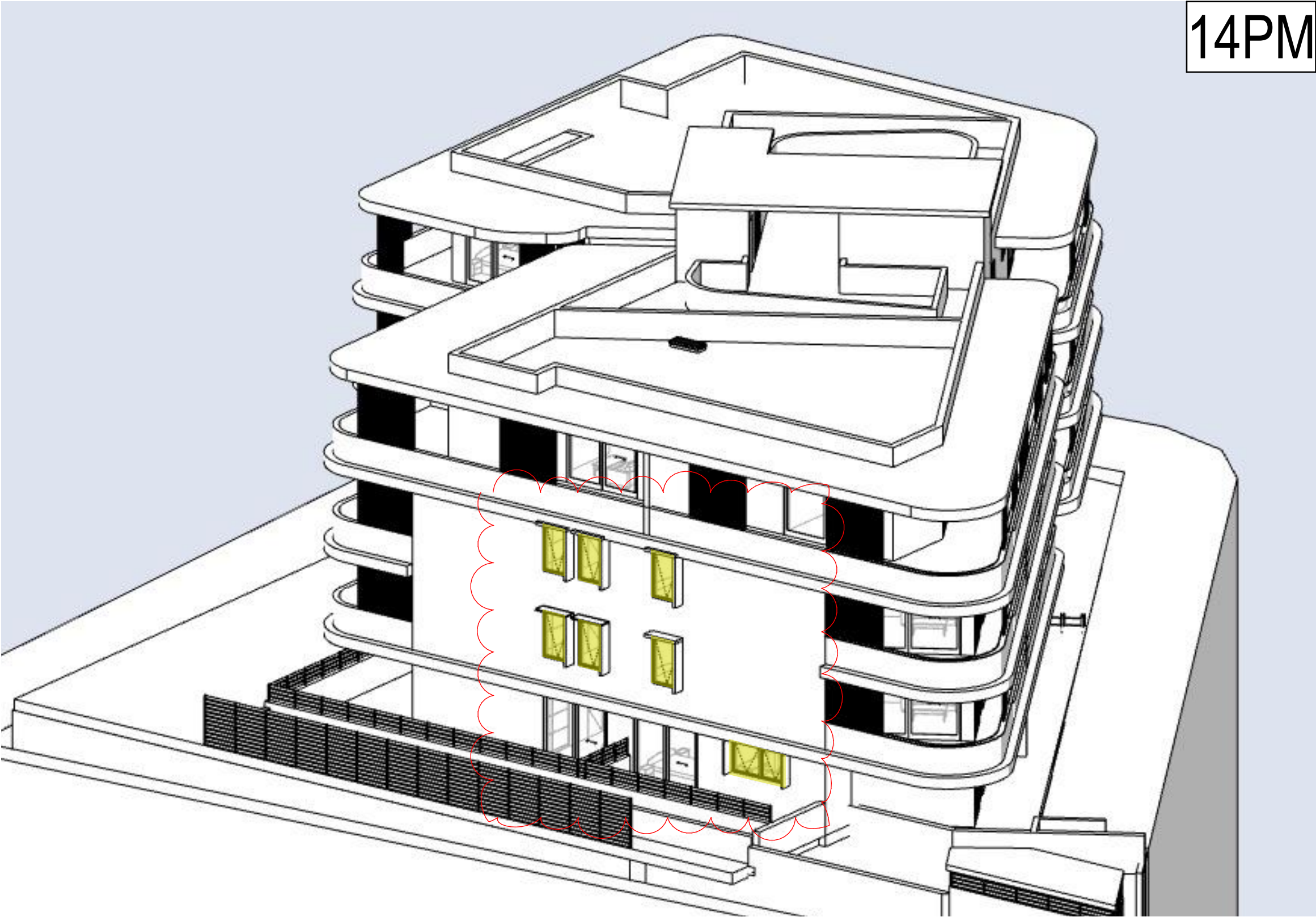
DRAWING NUMBER  
4014

ISSUE  
B

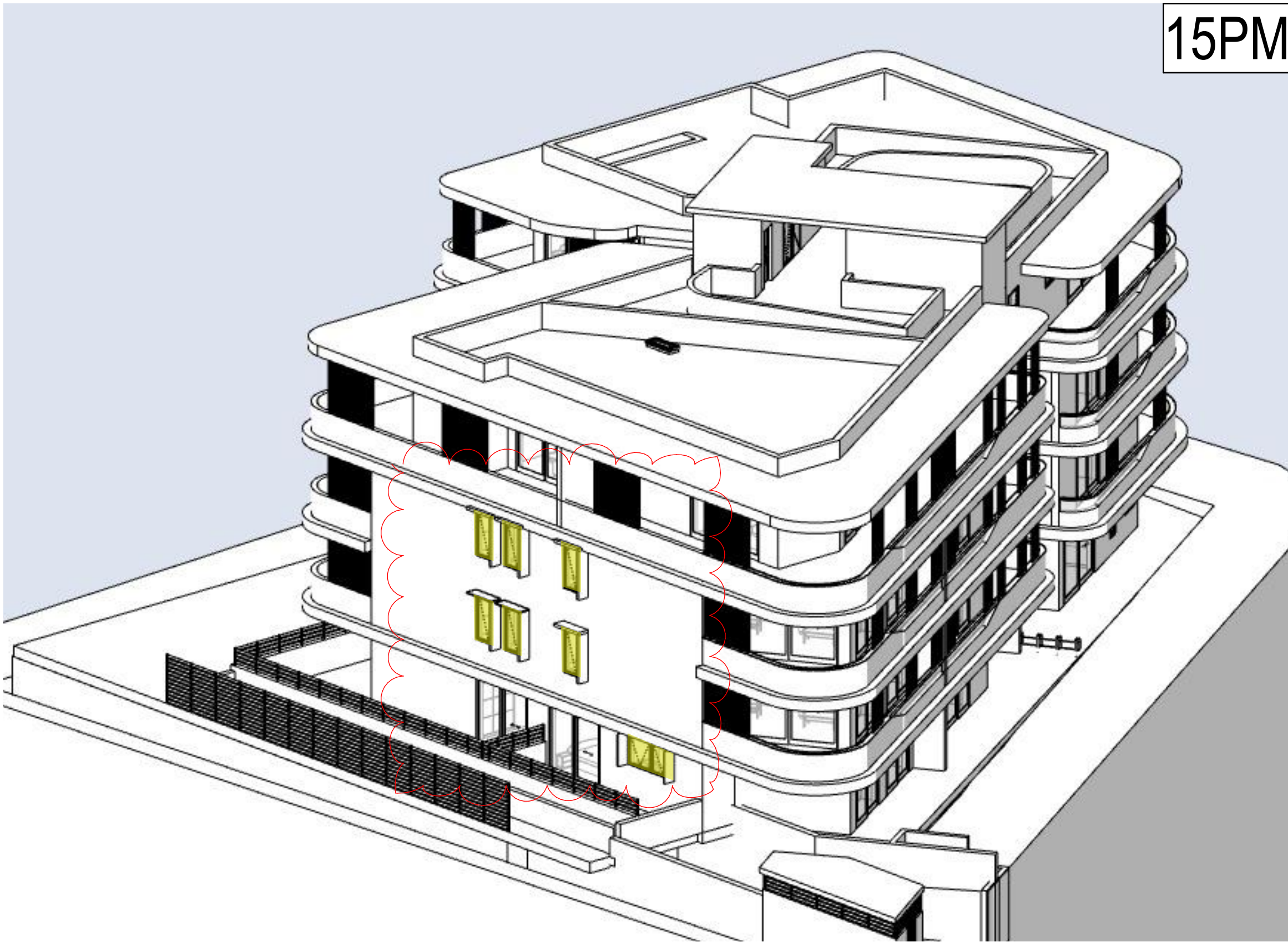




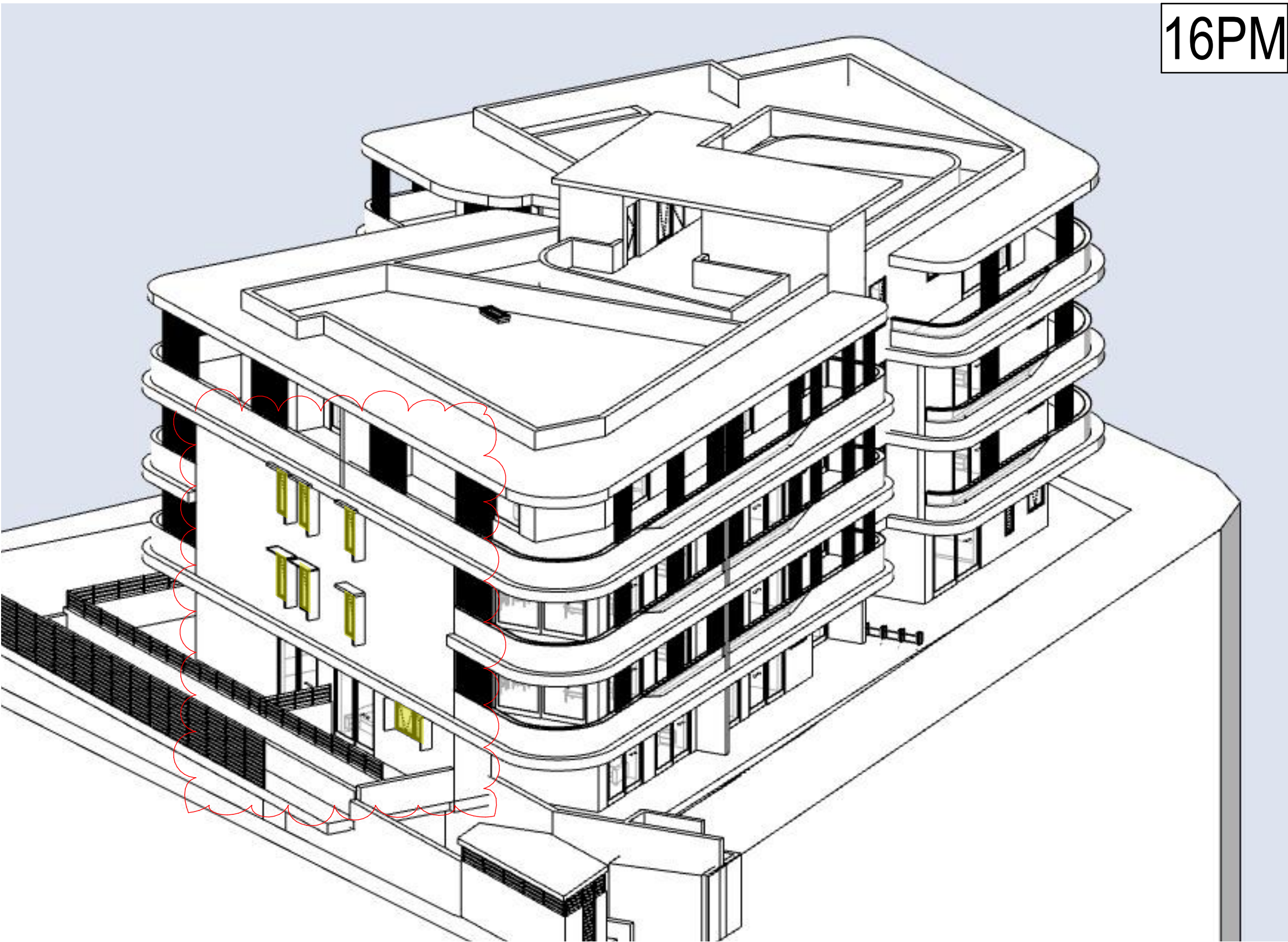
13PM



14PM



15PM



16PM

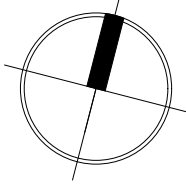


Nominated Architect  
Adrian Winton NSW Architects Registration Board 5347  
Unit 43 / 2 Slough Avenue, Silverwater, NSW 2128 Phone: 02 9648 8848  
admin@idraft.com.au www.idraft.com.au

NOTE: All work to be carried out in accordance with BCA, AS & Council's conditions.  
© COPYRIGHT: The concept & information contained in these drawings are the copyright of IDA Design Group Pty Ltd. Use or duplication in part or in full without written permission from IDA Design Group Pty Ltd constitutes an infringement of copyright.  
Do not scale off architectural drawings. These notes must be read in conjunction with colours selection for additional details on appliances.  
PC items & shower sized shown on plan are inside hob dimensions  
shower screens to be fitted on inside of hob bulkheads may be required to accommodate drainage lines & steel beams positions to be determined on site.  
USE FIGURED DIMENSIONS ONLY, DO NOT SCALE: Finished Ground Levels on plans are subject to site conditions, all calculated dimensions are subject to site measure during construction & no allowance has been made for shrinkage or milling position of electrical meter to be determined on site on accordance to the correct position front garden tap on meter.  
ENERGY SMART DESIGN: AAA rated water conservation devices include rainwater tanks shower heads, water taps flow regulators, dual flush toilets dislens & compliant hot water systems with minimum green house score of 3 stars are to be used in this development. Occupants are encouraged to use AAA rated dish washing machines with front loading where possible.  
DO NOT SCALE OFF ARCHITECTURAL DRAWINGS

AMENDMENTS		
REV	DATE	DESCRIPTION
A	22/12/2021	SUBMITTED DA TO COUNCIL
B	7/12/2022	SUBMITTED ADDITIONAL INFORMATION

TRUE  
NORTH



**STAMP**  
NOT TO BE USED DURING CONSTRUCTION

PAGE| SCALE  
A1 | 1:100

CLIENT  
INFINITY IDEAS PTY LTD

PROJECT  
RESIDENTIAL FLAT BUILDING

ADDRESS  
2-4 BOUNDARY ST & 85 RAILWAY ST,  
PARRMATT

LOCAL COUNCIL  
CITY OF PARRAMATTA COUNCIL

DRAWING  
SUNS EYE DIAGRAM

PROJECT NUMBER 28806	DATE: 7/12/2022
	DRAWN BY: MT
	DESIGNED BY: AW
	ISSUED FOR: DA

DRAWING NUMBER  
4015

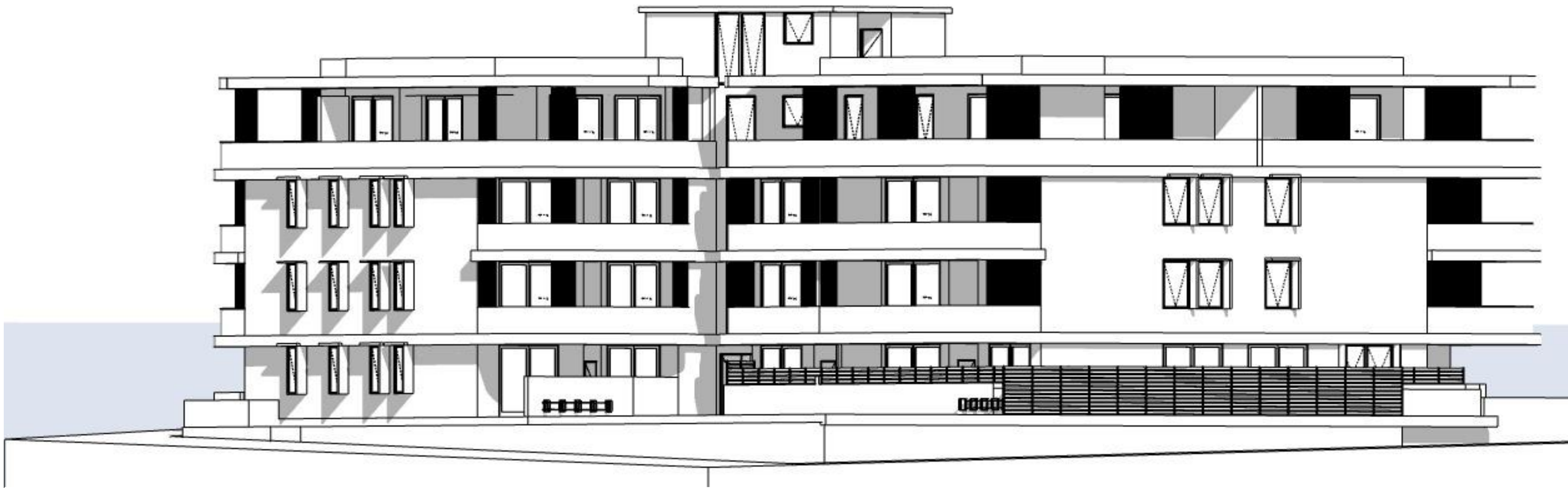
ISSUE  
B



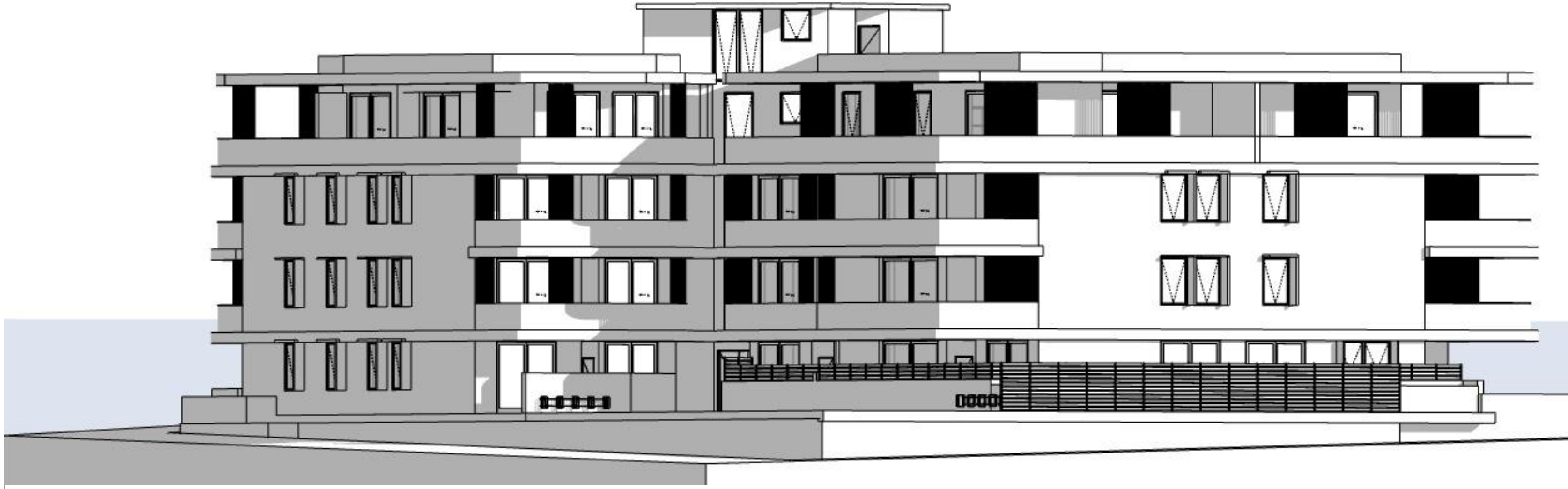
ISOMETRIC ELEVATION - 09AM



ISOMETRIC ELEVATION - 12PM



ISOMETRIC ELEVATION - 15PM



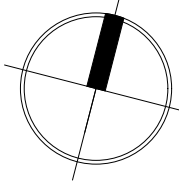
Nominated Architect  
Adrian Winton  
Unit 43 / 2 Slough Avenue,  
Silverwater, NSW 2128  
admin@idraft.com.au

NSW Architects Registration Board 5347  
Phone: 02 9648 8848  
www.idraft.com.au

NOTE: All work to be carried out in accordance with BCA, AS & Council's conditions.  
© COPYRIGHT: The concept & information contained in these drawings are the copyright of IDA Design Group Pty Ltd. Use or duplication in part or in full without written permission from IDA Design Group Pty Ltd constitutes an infringement of copyright.  
Do not scale off architectural drawings. These notes must be read in conjunction with colours selection for additional details on appliances.  
PC items & shower sized shown on plan are inside hob dimensions  
shower screens to be fitted on inside of hob bulkheads may be required to accommodate drainage lines & steel beams positions to be determined on site.  
USE FIGURED DIMENSIONS ONLY, DO NOT SCALE: Finished Ground Levels on plans are subject to site conditions, all calculated dimensions are subject to site measure during construction & no allowance has been made for shrinkage or milling position of electrical meter to be determined on site on accordance to the correct position front garden tap on meter.  
ENERGY SMART DESIGN: AAA rated water conservation devices include rainwater tanks shower heads, water taps flow regulators, dual flush toilets dislens & compliant hot water systems with minimum green house score of 3 stars are to be used in this development. Occupants are encouraged to use AAA rated dish washing machines with front loading where possible.  
DO NOT SCALE OFF ARCHITECTURAL DRAWINGS

AMENDMENTS		
REV	DATE	DESCRIPTION
A	22/12/2021	SUBMITTED DA TO COUNCIL
B	7/12/2022	SUBMITTED ADDITIONAL INFORMATION

TRUE  
NORTH



**STAMP**  
NOT TO BE USED DURING CONSTRUCTION

PAGE| SCALE  
A1 | 1:100

CLIENT  
INFINITY IDEAS PTY LTD

PROJECT  
RESIDENTIAL FLAT BUILDING

ADDRESS  
2-4 BOUNDARY ST & 85 RAILWAY ST,  
PARRMATT A

LOCAL COUNCIL  
CITY OF PARRAMATTA COUNCIL

DRAWING  
ISOMETRIC VIEWS

PROJECT NUMBER 28806	DATE: 7/12/2022
	DRAWN BY: MT
	DESIGNED BY: AW
	ISSUED FOR: DA

DRAWING NUMBER 4016	ISSUE B
------------------------	------------