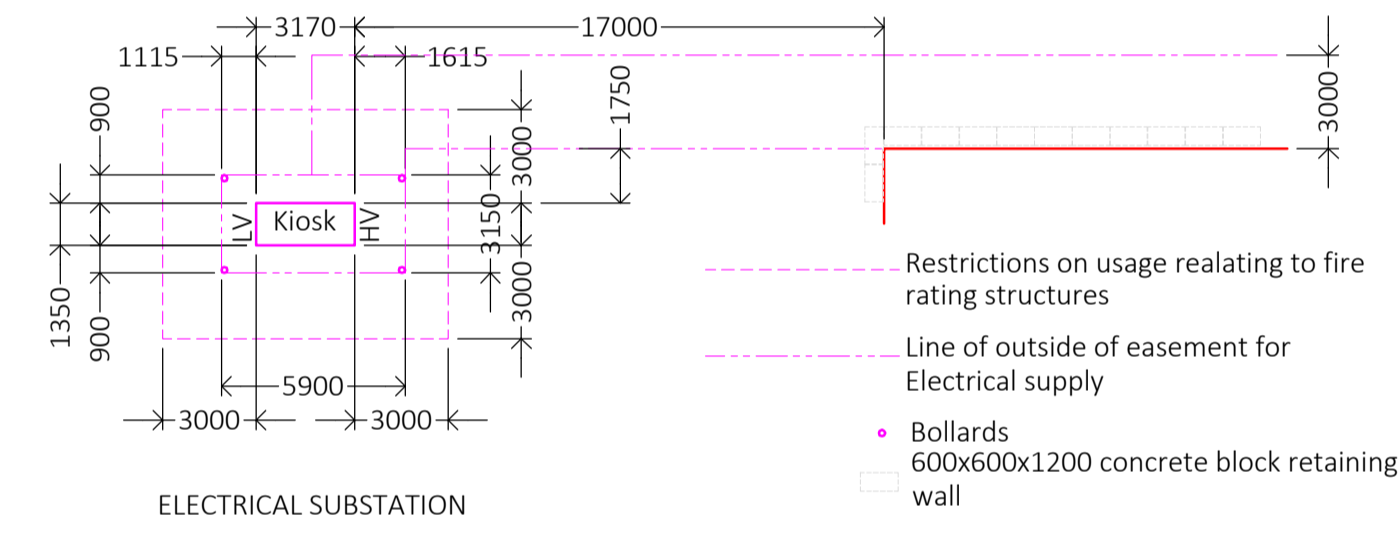
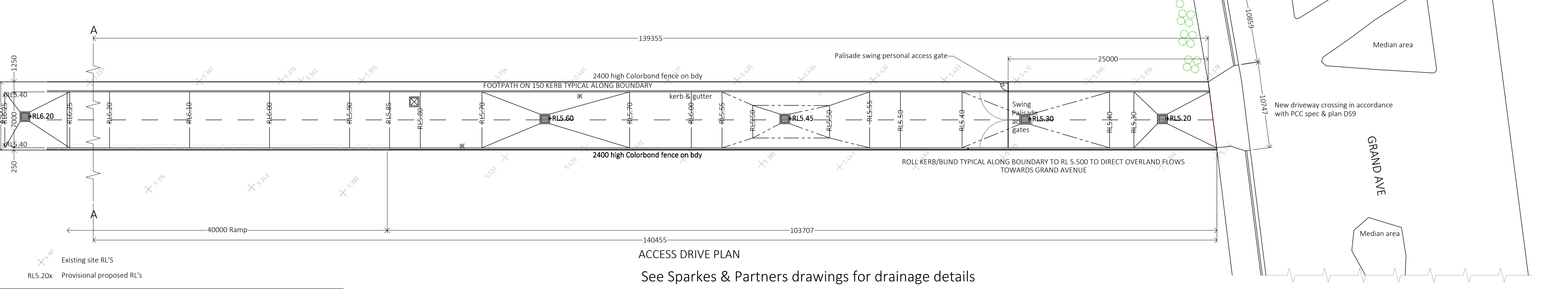


- NOTES:
- A. PREFAB BATCH OFFICE AT 1 ST FLOOR LEVEL.
 - B. OFFICES, AMENITIES- SEE DRG A5.
 - C. SILOS
 - D. OVERHEAD BINS - 2x8 COMPARTMENT 220 T CAPACITY (50% agg @ 1.7 t/m³ & 50% sand @ 1.4 t/m³) STEEL BINS, HOT GALV WITH SS LINING & VIBRATORS IN SAND COMPARTMENTS & FULL WALL ROCK LADDERS IN AGGREGATE COMPARTMENTS, OVER DUAL LINED WEIGH HOPPERS & AGGIE LOADING POINT.
 - E. SLUMP STANDS - 4 OFF UNDER ROOF.
 - F. WASHOUT PITS - 4 OFF 4x5 & BARREL WASH
 - G. DRIVE OVER GROUND BINS. 12x81m³ & 3x88m³. TOTAL 1237M³=2200T 50% SAND 50% AGGS APPROX. 6 BINS SS LINED WITH VIBRATORS.
 - H. Ha BLOCK MAKING & Hb STORAGE
 - I. RECYCLE WATER - CONVEYOR SPILL & WASHOUT PIT WEDGE, PUMP & STIRRER PITS.
 - J. RECYCLE WATER - LOAD BAY & SLUMP STAND COLLECTION WEDGE & PUMP PIT
 - K. LIQUID ADMIX UNDER SOLID ADMIX OVER WITH MONORAIL & HOIST.
 - L. FIBRE STORAGE AND DOSING WITH MONORAIL & HOIST.
 - M. DIESEL TANK UNDER BATCH OFFICE.
 - N. DUAL TANKER DISCHARGE ALLEYS WITH DEDICATED FILL LINES ON LHS OF BOTH ALLEY WITH CENTER RAISED MEDIAN STRIP AND HANDRAIL BARRIER.
 - O. STORMWATER COLLECTION AND OSD PIT.
 - P. OUT DOOR RECREATION
 - Q. SUB STATION
 - R. OVERHEAD ENCLOSED INCLINE CONVEYOR



SITE PLAN



ACCESS DRIVE PLAN

See Sparkes & Partners drawings for drainage details

E	Co-ordinate with Drainage Yard level amendments	29-3-22	JRC
D	Co-ordinate with Drainage. Minor Revs to Office. Drgs renumbered.	6-9-21	JRC
C	Issued for DA	27-7-21	JRC
B	Modification to add drainage detail	3-5-21	JRC
Rev	Description	Date	By

The content & intent of this drawing is the intellectual property of TAIT CONDON PTY LTD (TCH) & is issued for use on this project only. The design & it's intent does not become the property of the client & shall not be used or copied for any other project or purpose. TCH reserves all rights in this matter. This drawing shall not be reproduced or issued to 3rd parties in any form whatsoever without the written authority of TCH & all copies of this drawing will be returned to TCH on request.

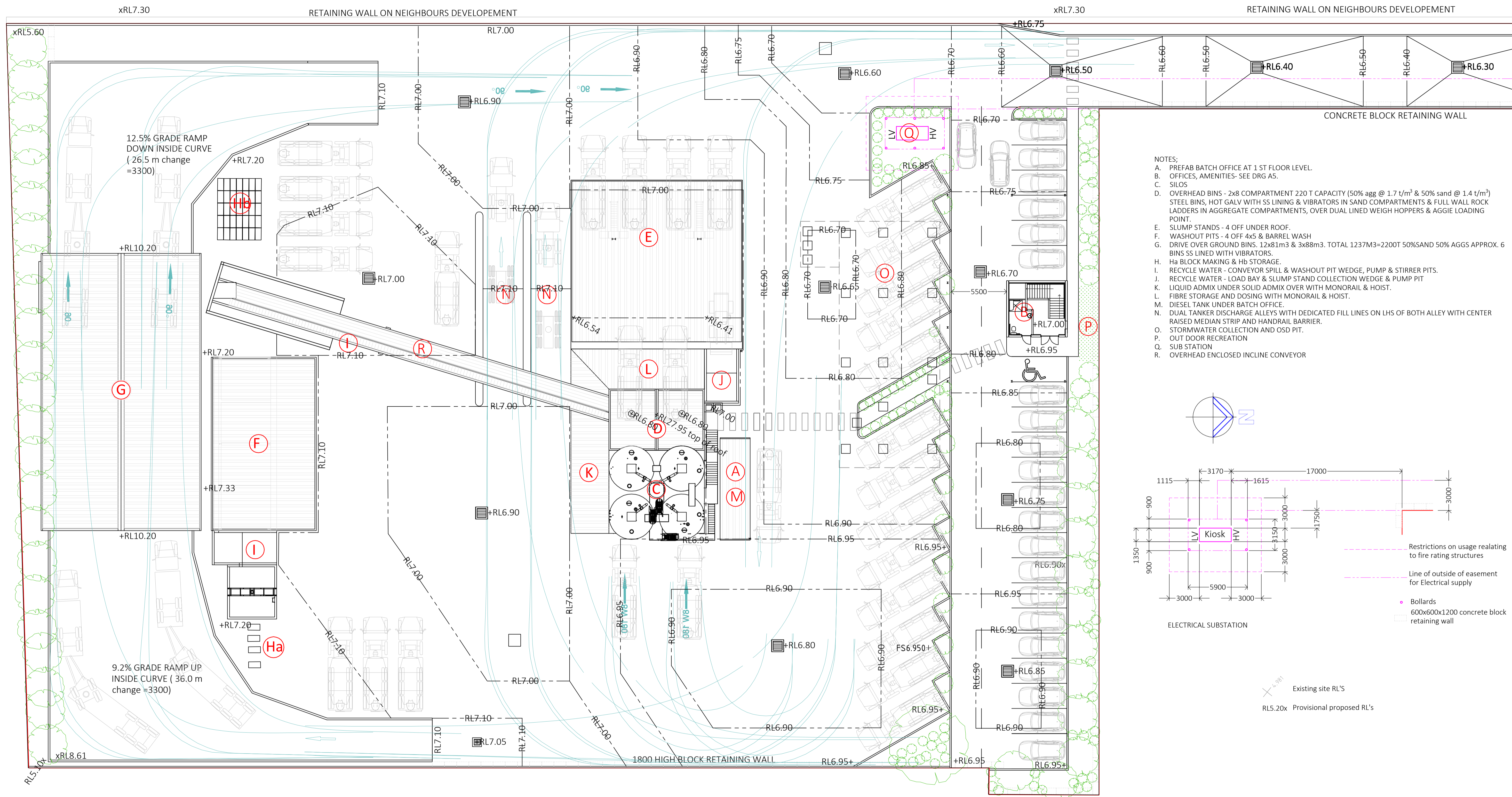
TCH
ABN 50 067 884 119

TAIT CONDON PTY LTD
57 MIDDLETON RD. DEE WHY NSW 2099
PH 02 9972 1207 FAX 02 9972 1227



CUSTOMER - HY-TEC
PROJECT - NEW PLANT 10A GRAND AVE CAMELLIA
CAD FILE #

DRAWING NO.	REV.
HYT-CAM-21-2680-A-1	E



SITE PLAN
 GENERAL LAYOUT WITH VEHICLE PARKING & TURNING PATHS
 See Sparkes & Partners drawings for drainage details

Rev	Description	Date	By
E	Co-ordinate with Drainage Yard level amendments	29-3-22	JRC
D	Co-ordinate with Drainage. Minor Revs to Office. Drgs renumbered.	6-9-21	JRC
C	Issued for DA	27-7-21	JRC
B	Modification to add drainage detail	3-5-21	JRC
Rev	Description	Date	By

The content & intent of this drawing is the intellectual property of TAIT CONDON PTY LTD (TCH) & is issued for use on this project only. The design & it's intent does not become the property of the client & shall not be used or copied for any other project or purpose. TCH reserves all rights in this matter. This drawing shall not be reproduced or issued to 3rd parties in any form whatsoever without the written authority of TCH & all copies of this drawing will be returned to TCH on request.

TCH
 ABN 50 067 884 119

TAIT CONDON PTY LTD
 57 MIDDLETON RD, DEE WHY NSW 2099
 PH 02 9972 1207 FAX 02 9972 1227

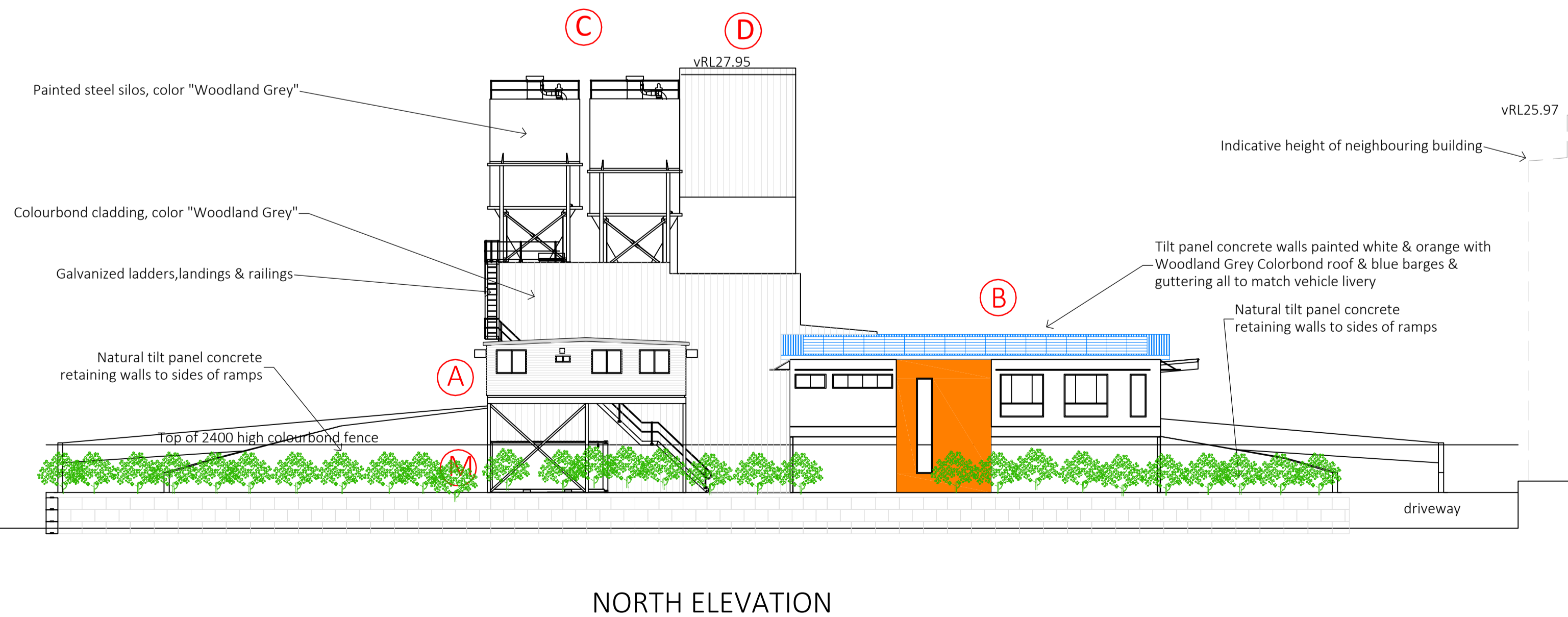
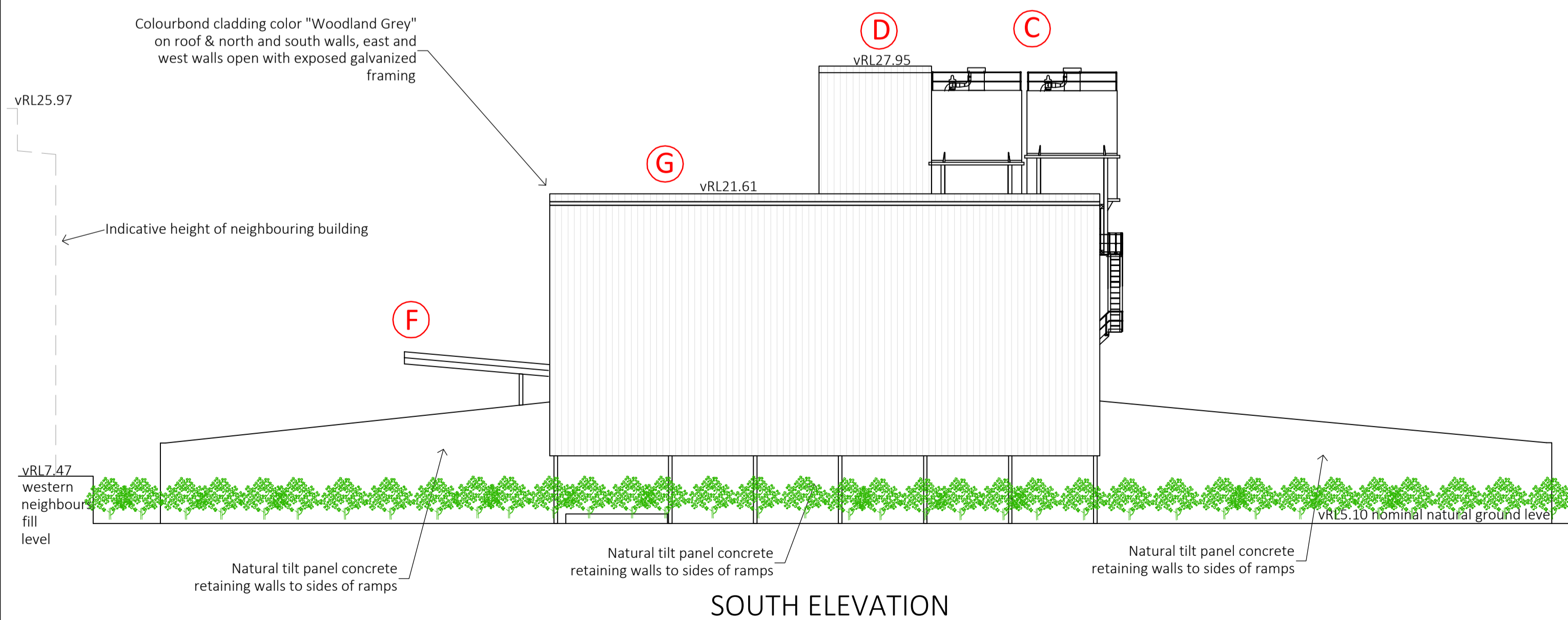
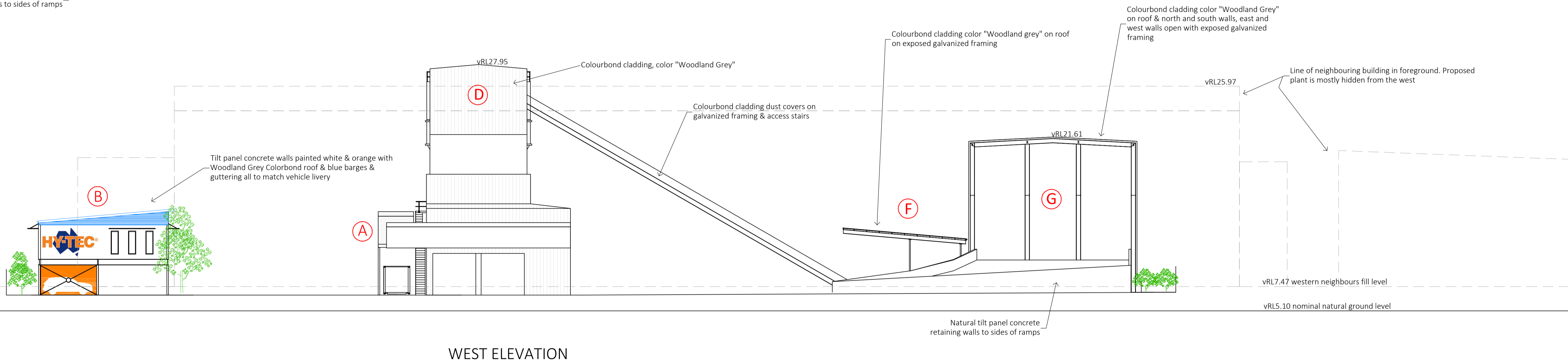
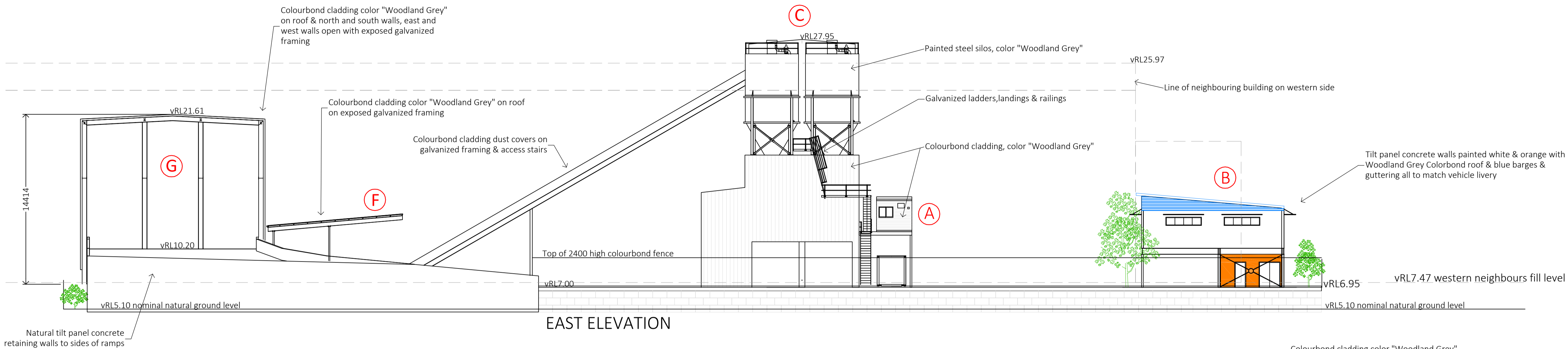
HY-TEC

CUSTOMER - HY-TEC
 PROJECT - NEW PLANT 10A GRAND AVE CAMELLIA
 CAD FILE #

DRAWING NO.
 HYT-CAM-21-2680-A-2

REV.
 E

- NOTES:
- A. PREFAB BATCH OFFICE AT 1 ST FLOOR LEVEL.
 - B. OFFICES, AMENITIES- SEE DRG A5.
 - C. SILOS - SAME AS SHIRLEY ST ROSEHILL.
 - D. OVERHEAD BINS - 2x8 COMPARTMENT 220 T CAPACITY (50% agg @ 1.7 t/m³ & 50% sand @ 1.4 t/m³) STEEL BINS, HOT GALV WITH SS LINING & VIBRATORS IN SAND COMPARTMENTS & FULL WALL ROCK LADDERS IN AGGREGATE COMPARTMENTS, OVER DUAL LINED WEIGH HOPPERS & AGGIE LOADING POINT.
 - E. SLUMP STANDS - 4 OFF UNDER ROOF.
 - F. WASHOUT PITS - 4 OFF 4x5 & BARREL WASH.
 - G. DRIVE OVER GROUND BINS. 12x81m³ & 3x88m³. TOTAL 1237M³-2200T 50% SAND 50% AGGS APPROX. 6 BINS SS LINED WITH VIBRATORS.
 - H. BLOCK MAKING & STORAGE.
 - I. RECYCLE WATER - CONVEYOR SPILL & WASHOUT PIT WEDGE, PUMP & STIRRER PITS.
 - J. RECYCLE WATER - LOAD BAY & SLUMP STAND COLLECTION WEDGE & PUMP PIT.
 - K. LIQUID ADMIX UNDER SOLID ADMIX OVER WITH MONORAIL & HOIST.
 - L. FIBRE STORAGE AND DOSING WITH MONORAIL & HOIST.
 - M. DIESEL TANK UNDER BATCH OFFICE.
 - N. DUAL TANKER DISCHARGE ALLEYS WITH DEDICATED FILL LINES ON LHS OF BOTH ALLEY WITH CENTER RAISED MEDIAN STRIP AND HANDRAIL BARRIER.
 - O. STORMWATER COLLECTION AND OSD PIT.
 - P. OUT DOOR RECREATION



E	Co-ordinate with Drainage Yard level amendments	29-3-22	JRC
D	Co-ordinate with Drainage. Minor Revs to Office. Drgs renumbered.	6-9-21	JRC
C	Issued for DA	27-7-21	JRC
B	Modification to add drainage detail	3-5-21	JRC
Rev	Description	Date	By

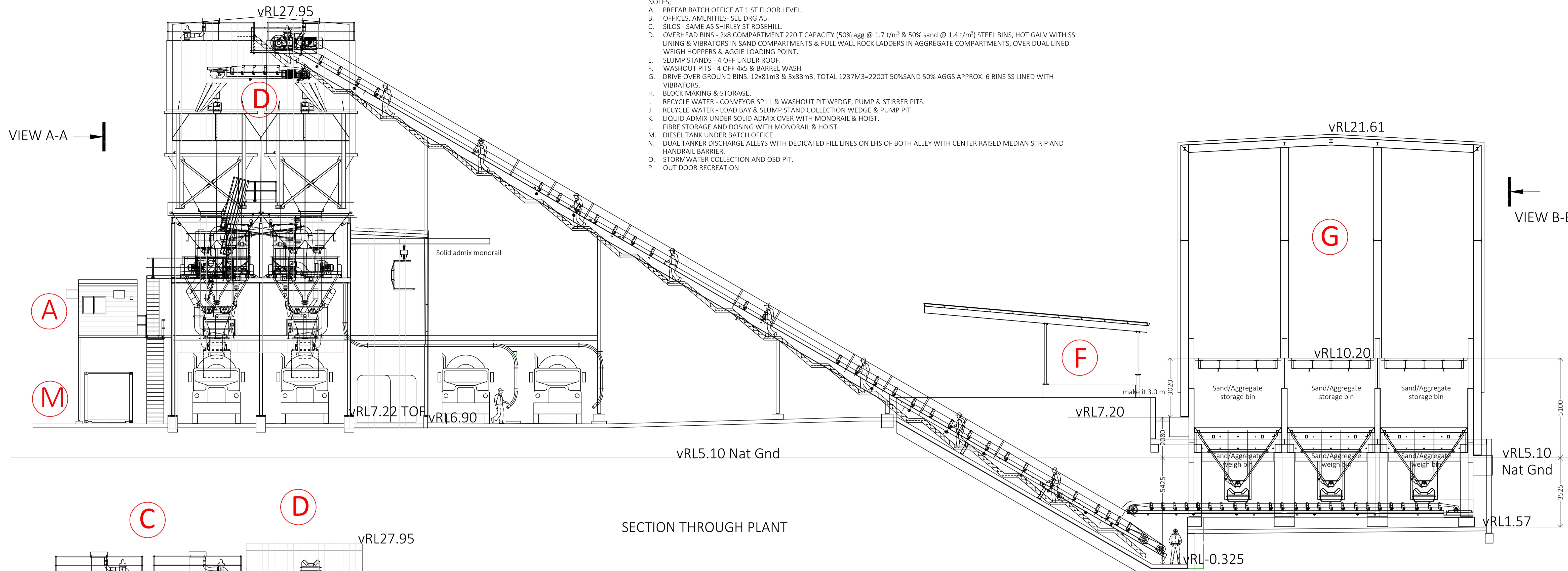
The content & intent of this drawing is the intellectual property of TAIT CONDON PTY LTD (TCH) & is issued for use on this project only. The design & it's intent does not become the property of the client & shall not be used or copied for any other project or purpose. TCH reserves all rights in this matter. This drawing shall not be reproduced or issued to 3rd parties in any form whatsoever without the written authority of TCH & all copies of this drawing will be returned to TCH on request.

TCH
ABN 50 067 884 119

TAIT CONDON PTY LTD
57 MIDDLETON RD, DEE WHY NSW 2099
PH 02 9972 1207 FAX 02 9972 1227

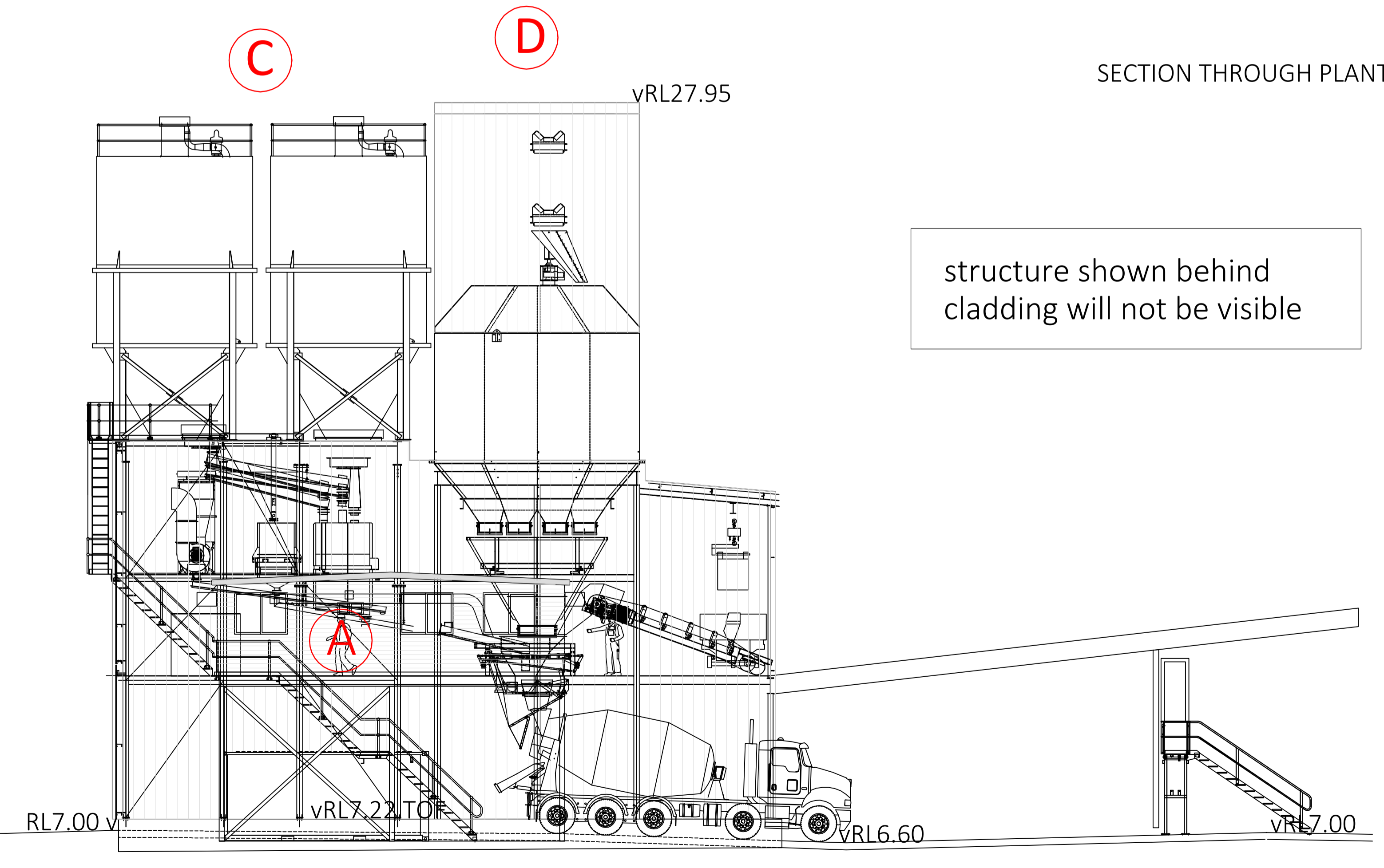
CUSTOMER - HY-TEC
PROJECT - NEW PLANT 10A GRAND AVE CAMELLIA
CAD FILE #

DRAWING NO. REV. E
HYT-CAM-21-2680-A-4

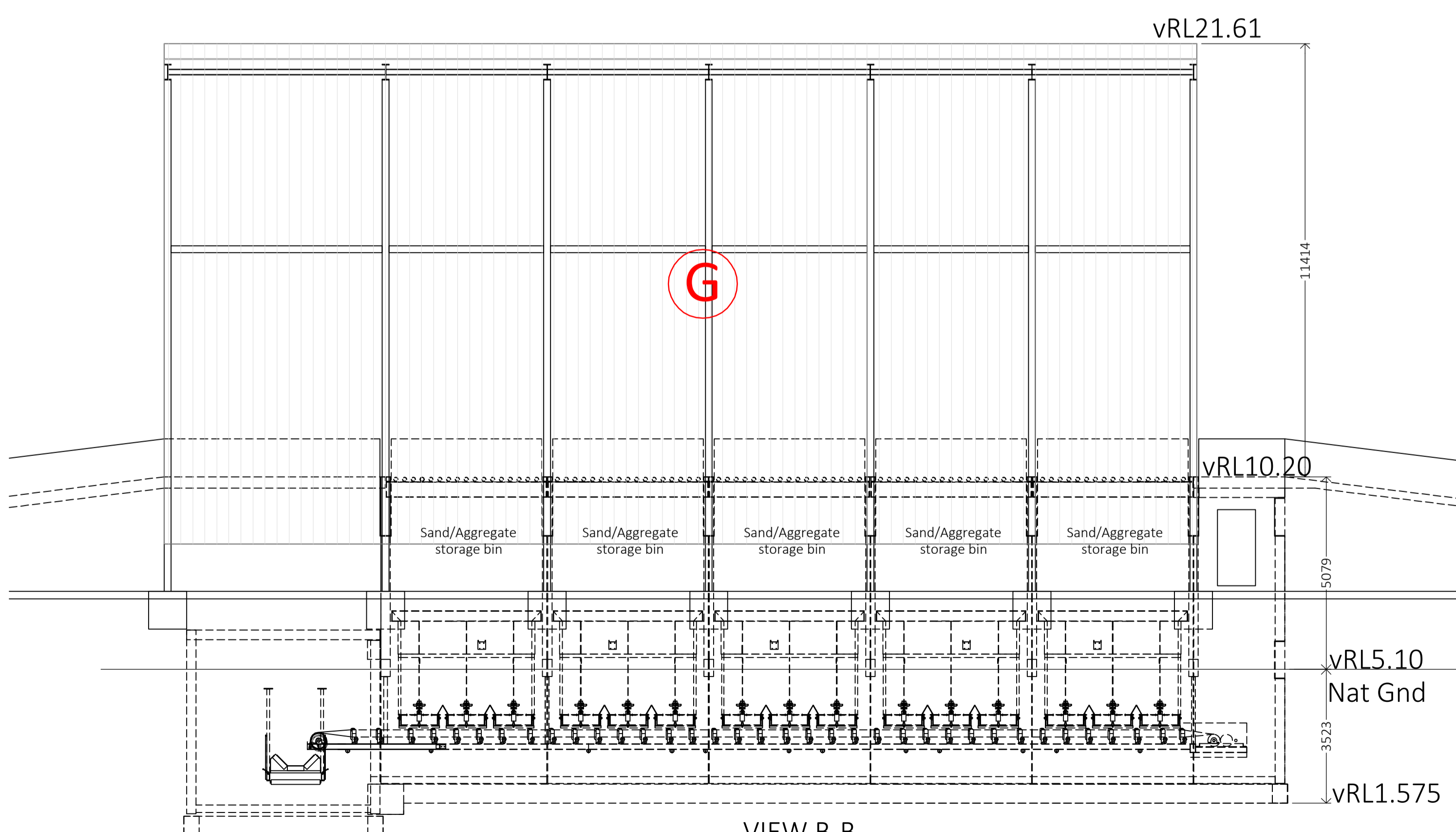


- NOTES:
- A. PREFAB BATCH OFFICE AT 1 ST FLOOR LEVEL.
 - B. OFFICES, AMENITIES- SEE DRG A5.
 - C. SILOS - SAME AS SHIRLEY ST ROSEHILL.
 - D. OVERHEAD BINS - 2x8 COMPARTMENT 220 T CAPACITY (50% agg @ 1.7 t/m³ & 50% sand @ 1.4 t/m³) STEEL BINS, HOT GALV WITH SS LINING & VIBRATORS IN SAND COMPARTMENTS & FULL WALL ROCK LADDERS IN AGGREGATE COMPARTMENTS, OVER DUAL LINED WEIGH HOPPERS & AGGIE LOADING POINT.
 - E. SLUMP STANDS - 4 OFF UNDER ROOF.
 - F. WASHOUT PITS - 4 OFF 4x5 & BARREL WASH
 - G. DRIVE OVER GROUND BINS. 12x81m3 & 3x88m3. TOTAL 1237M3=2200T 50% SAND 50% AGGS APPROX. 6 BINS SS LINED WITH VIBRATORS.
 - H. BLOCK MAKING & STORAGE.
 - I. RECYCLE WATER - CONVEYOR SPILL & WASHOUT PIT WEDGE, PUMP & STIRRER PITS.
 - J. RECYCLE WATER - LOAD BAY & SLUMP STAND COLLECTION WEDGE & PUMP PIT
 - K. LIQUID ADMIX UNDER SOLID ADMIX OVER WITH MONORAIL & HOIST.
 - L. FIBRE STORAGE AND DOSING WITH MONORAIL & HOIST.
 - M. DIESEL TANK UNDER BATCH OFFICE.
 - N. DUAL TANKER DISCHARGE ALLEYS WITH DEDICATED FILL LINES ON LHS OF BOTH ALLEY WITH CENTER RAISED MEDIAN STRIP AND HANDRAIL BARRIER.
 - O. STORMWATER COLLECTION AND OSD PIT.
 - P. OUT DOOR RECREATION

SECTION THROUGH PLANT



VIEW A-A



VIEW B-B

Rev	Description	Date	By
E	Co-ordinate with Drainage Yard level amendments	29-3-22	JRC
D	Co-ordinate with Drainage. Minor Revs to Office. Drgs renumbered.	6-9-21	JRC
C	Issued for DA	27-7-21	JRC
B	Modification to add drainage detail	3-5-21	JRC
A			

The content & intent of this drawing is the intellectual property of TAIT CONDON PTY LTD (TCH) & is issued for use on this project only. The design & it's intent does not become the property of the client & shall not be used or copied for any other project or purpose. TCH reserves all rights in this matter. This drawing shall not be reproduced or issued to 3rd parties in any form whatsoever without the written authority of TCH & all copies of this drawing will be returned to TCH on request.

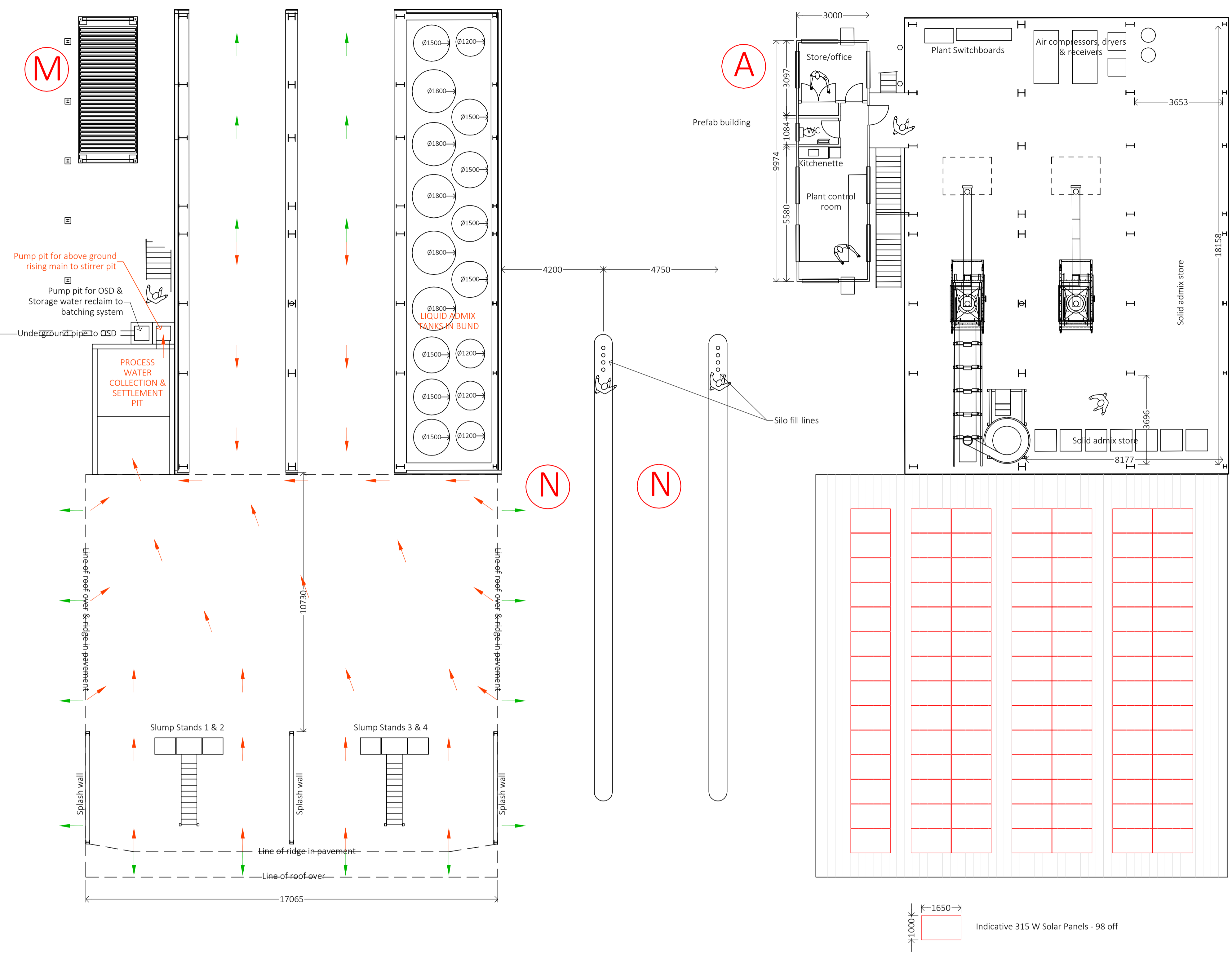
TCH
ABN 50 067 884 119

TAIT CONDON PTY LTD
57 MIDDLETON RD, DEE WHY NSW 2099
PH 02 9972 1207 FAX 02 9972 1227

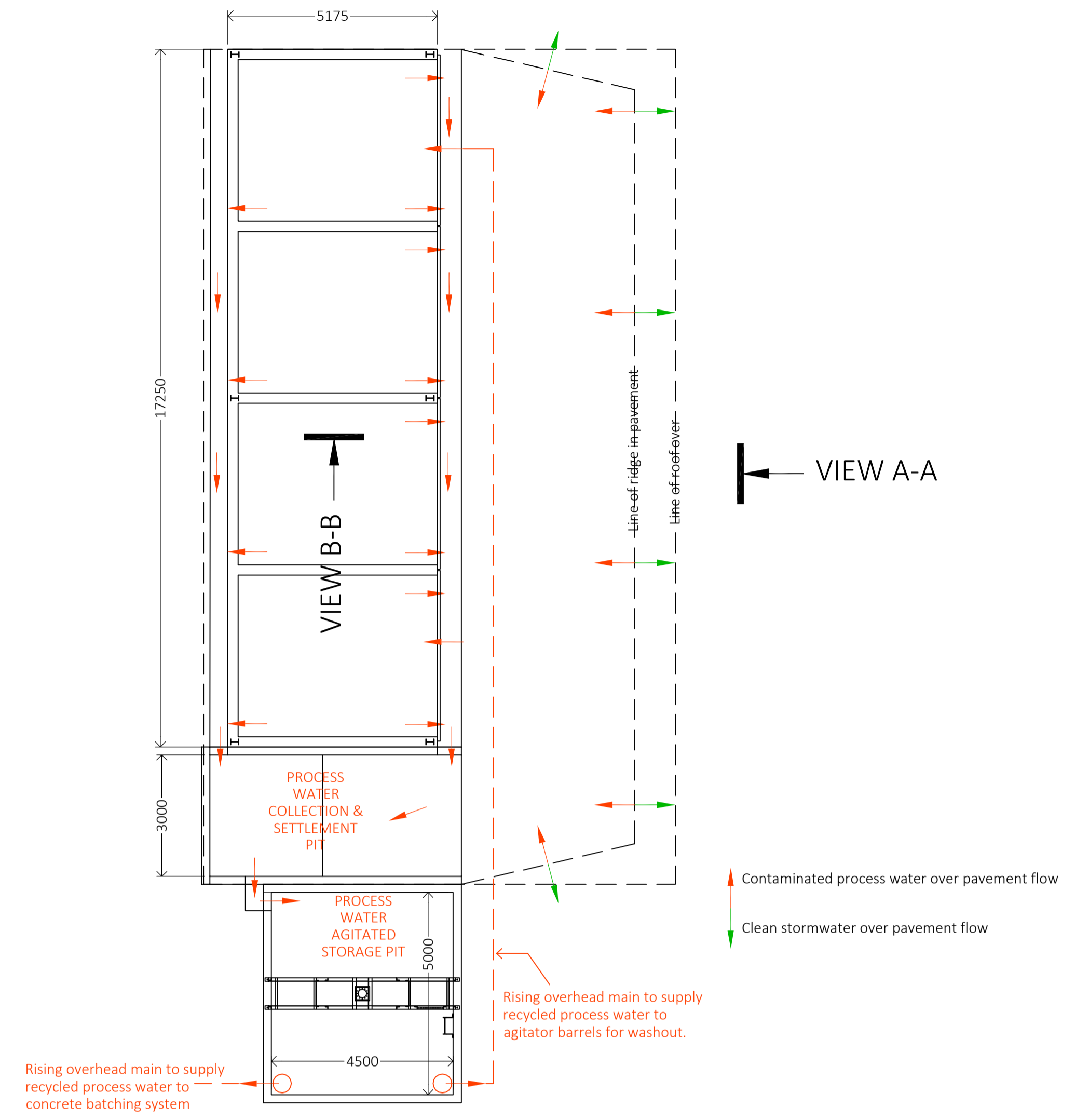


CUSTOMER - HY-TEC
PROJECT - NEW PLANT 10A GRAND AVE CAMELLIA
CAD FILE #

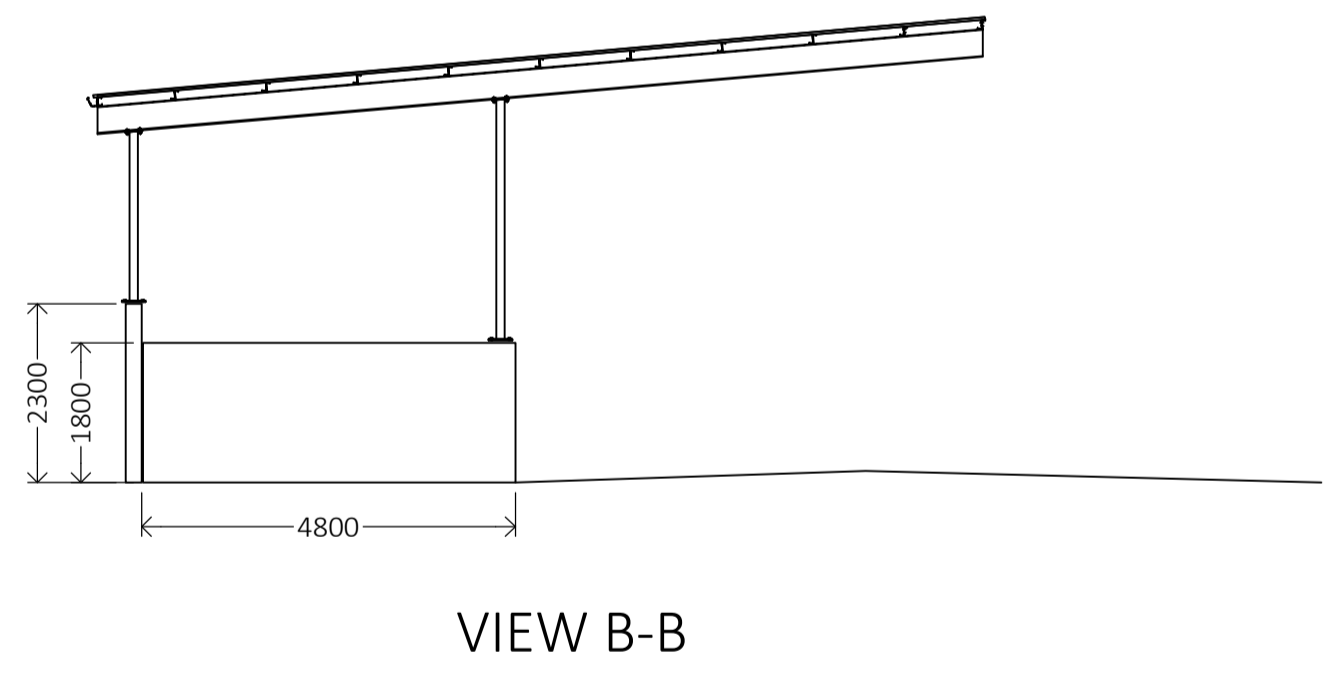
DRAWING NO. REV. E
HYT-CAM-21-2680-A-6



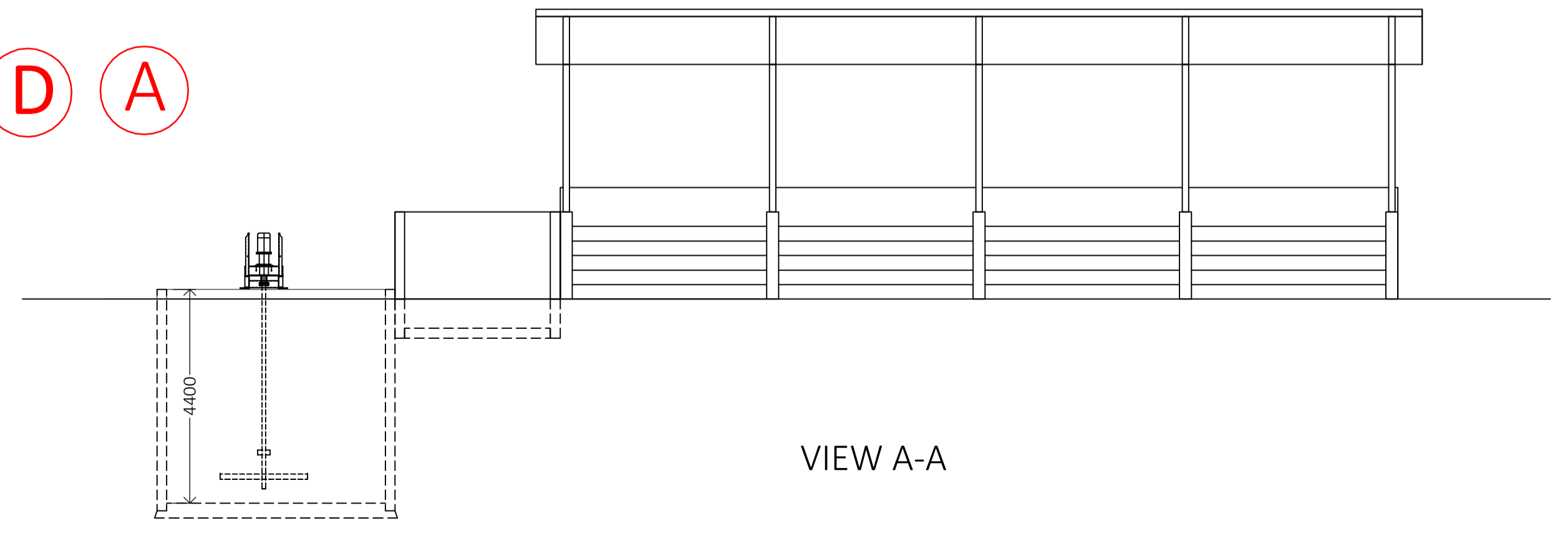
FIRST FLOOR PLAN (C) (D) (A)



AGITATOR BARREL WASHOUT FACILITY



VIEW B-B



VIEW A-A

GROUND FLOOR PLAN (C) (D) (M)

Contaminated process water over pavement flow
Clean stormwater over pavement flow

- NOTES:
- A. PREFAB BATCH OFFICE AT 1 ST FLOOR LEVEL.
 - B. OFFICES, AMENITIES- SEE DRG AS.
 - C. SILOS - SAME AS SHIRLEY ST ROSEHILL.
 - D. OVERHEAD BINS - 2x8 COMPARTMENT 220 T CAPACITY (50% agg @ 1.7 t/m³ & 50% sand @ 1.4 t/m³) STEEL BINS, HOT GALV WITH SS LINING & VIBRATORS IN SAND COMPARTMENTS & FULL WALL ROCK LADDERS IN AGGREGATE COMPARTMENTS, OVER DUAL LINED WEIGH HOPPERS & AGGIE LOADING POINT.
 - E. SLUMP STANDS - 4 OFF UNDER ROOF.
 - F. WASHOUT PITS - 4 OFF 4x5 & BARREL WASH
 - G. DRIVE OVER GROUND BINS. 12x81m3 & 3x88m3. TOTAL 1237M3=2200T 50% SAND 50% AGGS APPROX. 6 BINS SS LINED WITH VIBRATORS.
 - H. BLOCK MAKING & STORAGE.
 - I. RECYCLE WATER - CONVEYOR SPILL & WASHOUT PIT WEDGE, PUMP & STIRRER PITS.
 - J. RECYCLE WATER - LOAD BAY & SLUMP STAND COLLECTION WEDGE & PUMP PIT
 - K. LIQUID ADMIX UNDER SOLID ADMIX OVER WITH MONORAIL & HOIST.
 - L. FIBRE STORAGE AND DOSING WITH MONORAIL & HOIST.
 - M. DIESEL TANK UNDER BATCH OFFICE.
 - N. DUAL TANKER DISCHARGE ALLEYS WITH DEDICATED FILL LINES ON LHS OF BOTH ALLEY WITH CENTER RAISED MEDIAN STRIP AND HANDRAIL BARRIER.
 - O. STORMWATER COLLECTION AND OSD PIT.
 - P. OUT DOOR RECREATION

E	Co-ordinate with Drainage Yard level amendments	29-3-22	JRC
D	Co-ordinate with Drainage. Minor Revs to Office. Drgs renumbered.	6-9-21	JRC
C	Issued for DA	27-7-21	JRC
B	Modification to add drainage detail	3-5-21	JRC
Rev	Description	Date	By

The content & intent of this drawing is the intellectual property of TAIT CONDON PTY LTD (TCH) & is issued for use on this project only. The design & it's intent does not become the property of the client & shall not be used or copied for any other project or purpose. TCH reserves all rights in this matter. This drawing shall not be reproduced or issued to 3rd parties in any form whatsoever without the written authority of TCH & all copies of this drawing will be returned to TCH on request.

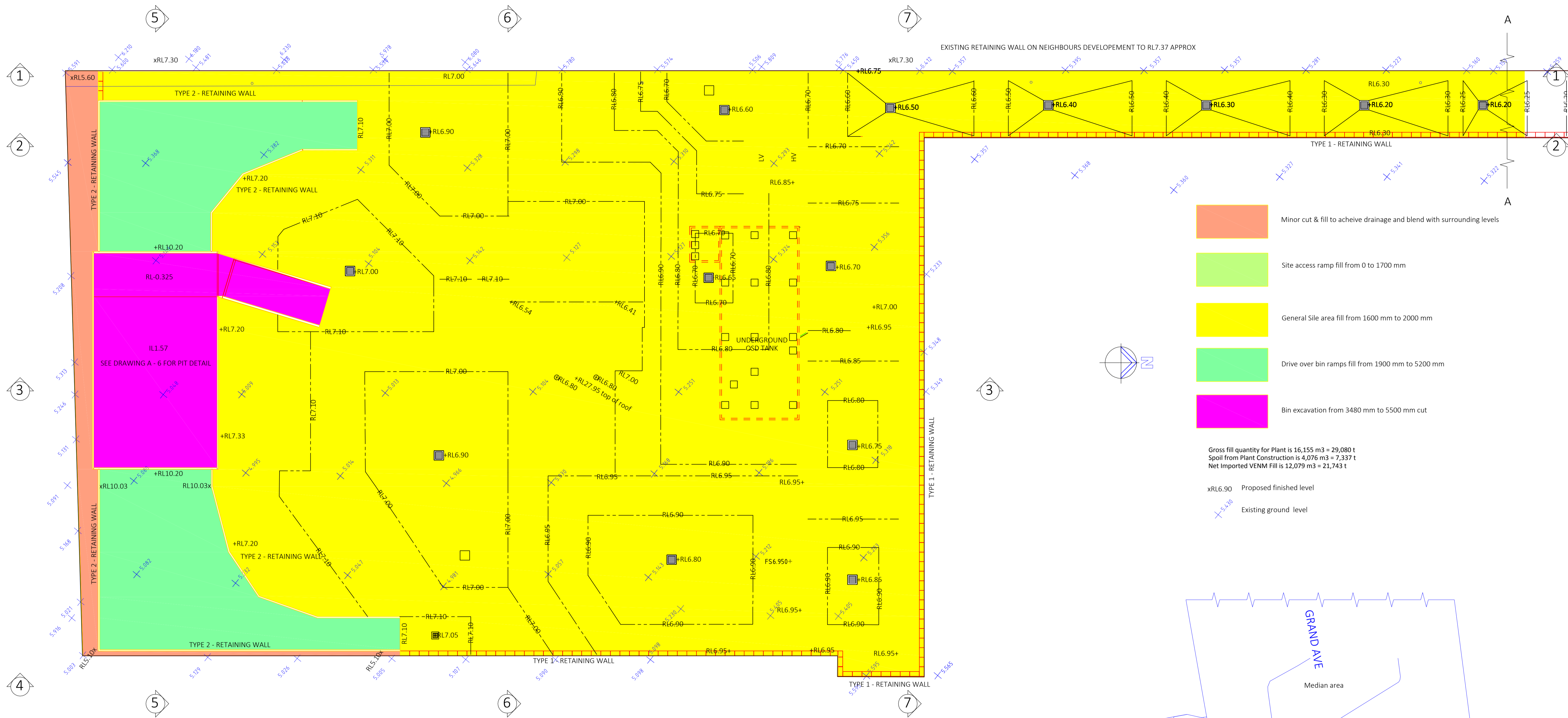
TCH
ABN 50 067 884 119

TAIT CONDON PTY LTD
57 MIDDLETON RD, DEE WHY NSW 2099
PH 02 9972 1207 FAX 02 9972 1227



CUSTOMER - HY-TEC
PROJECT - NEW PLANT 10A GRAND AVE CAMELLIA
CAD FILE #

DRAWING NO. REV. E
HYT-CAM-21-2680-A-7

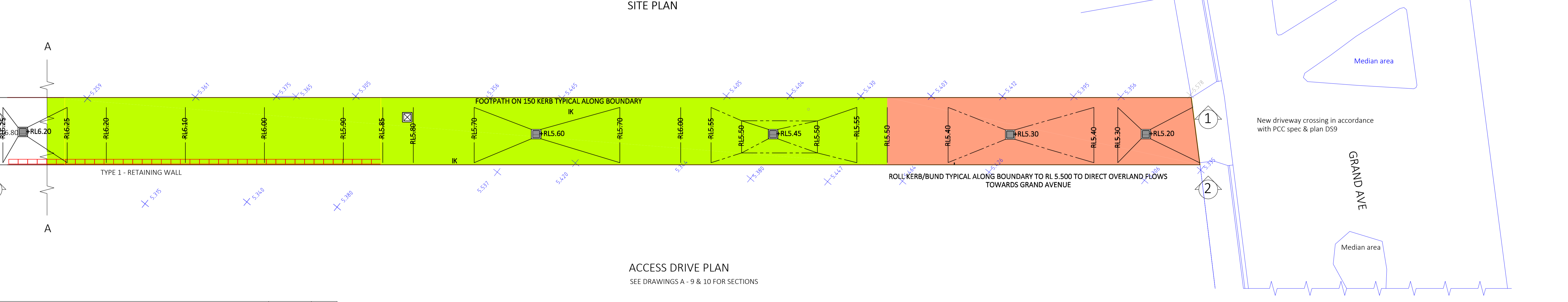


SITE PLAN

- Minor cut & fill to achieve drainage and blend with surrounding levels
- Site access ramp fill from 0 to 1700 mm
- General Site area fill from 1600 mm to 2000 mm
- Drive over bin ramps fill from 1900 mm to 5200 mm
- Bin excavation from 3480 mm to 5500 mm cut

Gross fill quantity for Plant is 16,155 m³ = 29,080 t
 Spoil from Plant Construction is 4,076 m³ = 7,337 t
 Net Imported VENM Fill is 12,079 m³ = 21,743 t

xRL6.90 Proposed finished level
 xRL5.430 Existing ground level



ACCESS DRIVE PLAN
 SEE DRAWINGS A - 9 & 10 FOR SECTIONS

E	Co-ordinate with Drainage Yard level amendments	29-3-22	JRC
D	For DA	6-12-21	JRC
C	Not Issued	-	-
B	Not Issued	-	-
Rev	Description	Date	By

The content & intent of this drawing is the intellectual property of TAIT CONDON PTY LTD (TCH) & is issued for use on this project only. The design & it's intent does not become the property of the client & shall not be used or copied for any other project or purpose. TCH reserves all rights in this matter. This drawing shall not be reproduced or issued to 3rd parties in any form whatsoever without the written authority of TCH & all copies of this drawing will be returned to TCH on request.

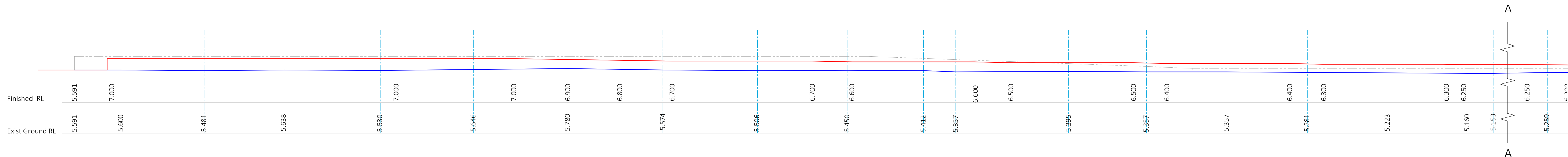
TCH
 ABN 50 067 884 119

TAIT CONDON PTY LTD
 57 MIDDLETON RD, DEE WHY NSW 2099
 PH 02 9972 1207 FAX 02 9972 1227

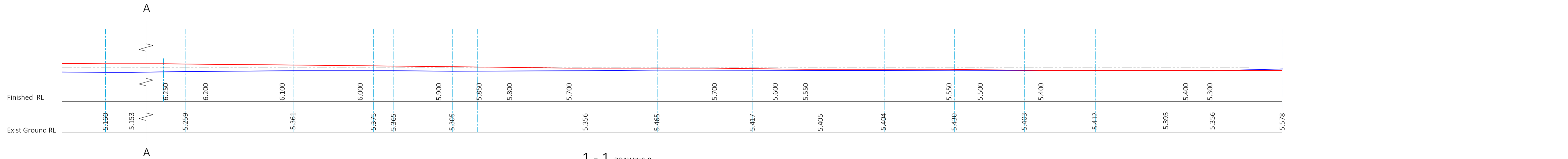


CUSTOMER - HY-TEC
 PROJECT - NEW PLANT 10A GRAND AVE CAMELLIA
 CAD FILE #

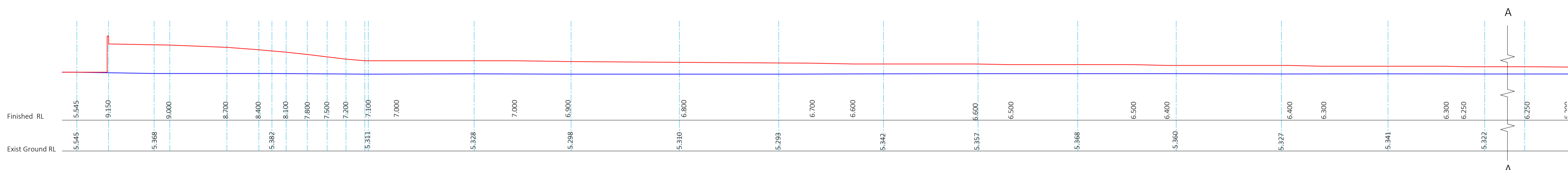
DRAWING NO. **HYT-CAM-21-2680-A- 8**
 REV. **E**



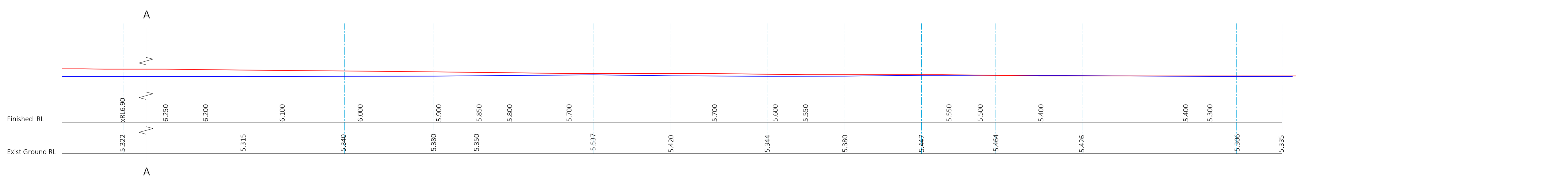
1 - 1 DRAWING 8



1 - 1 DRAWING 8



2 - 2 DRAWING 8



2 - 2 DRAWING 8

— EXISTING GROUND
— PROPOSED GROUND LEVEL
- - - LINE OF FILL ON WESTERN BOUNDARY

E	Co-ordinate with Drainage Yard level amendments	29-3-22	JRC
D	For DA	6-12-21	JRC
C	Not Issued	-	-
B	Not Issued	-	-
Rev	Description	Date	By

The content & intent of this drawing is the intellectual property of TAIT CONDON PTY LTD (TCH) & is issued for use on this project only. The design & it's intent does not become the property of the client & shall not be used or copied for any other project or purpose. TCH reserves all rights in this matter. This drawing shall not be reproduced or issued to 3rd parties in any form whatsoever without the written authority of TCH & all copies of this drawing will be returned to TCH on request.

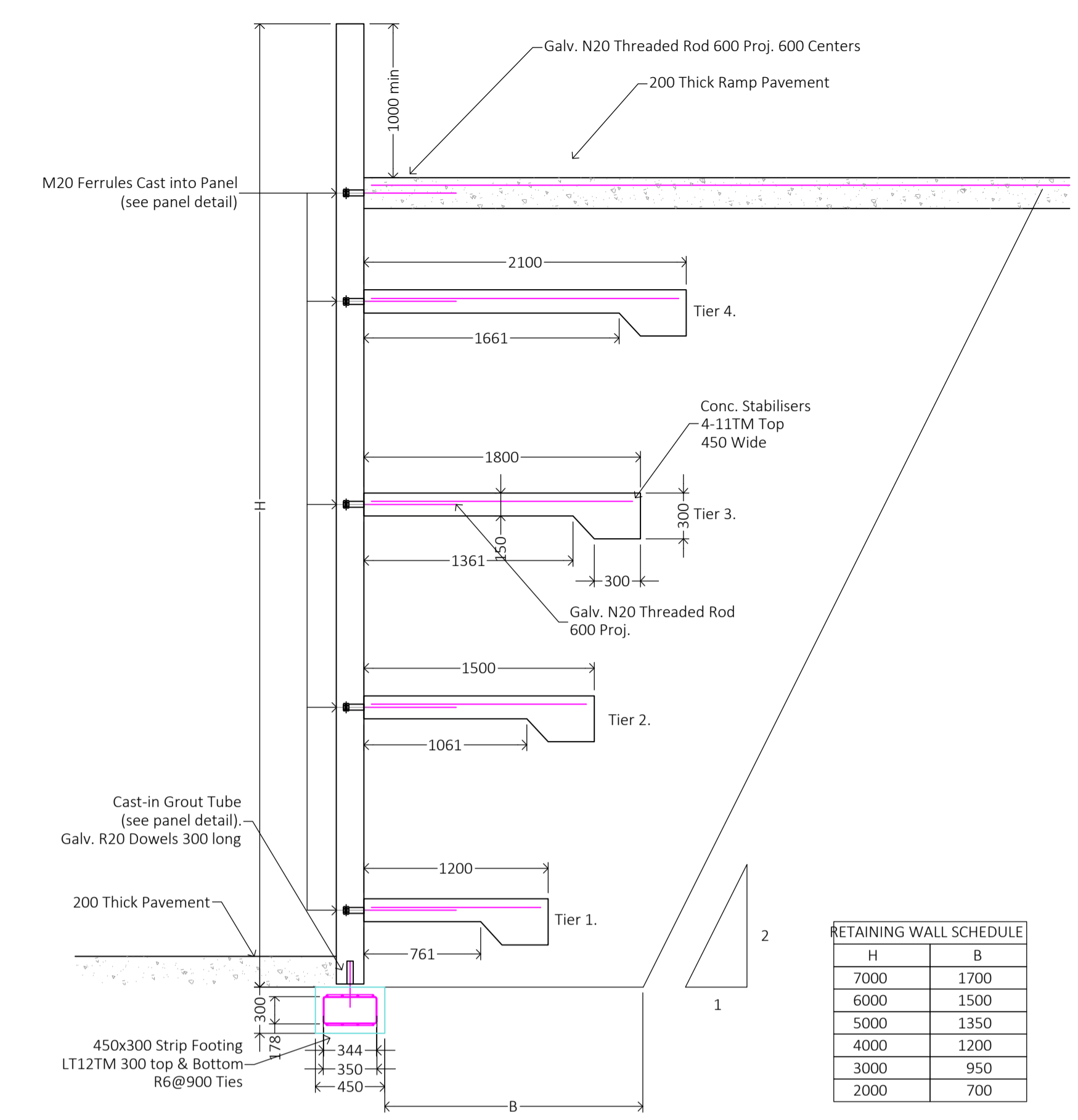
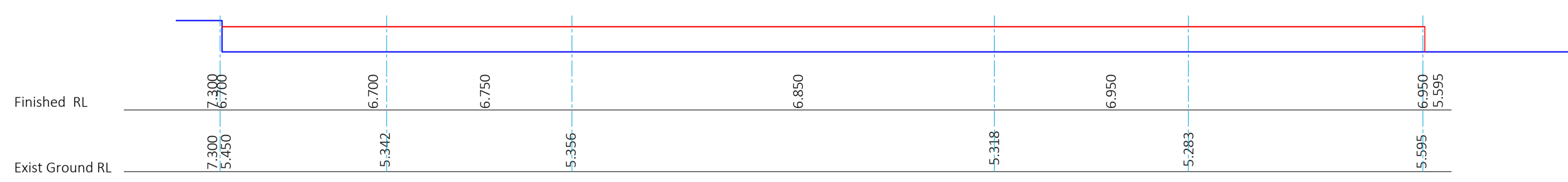
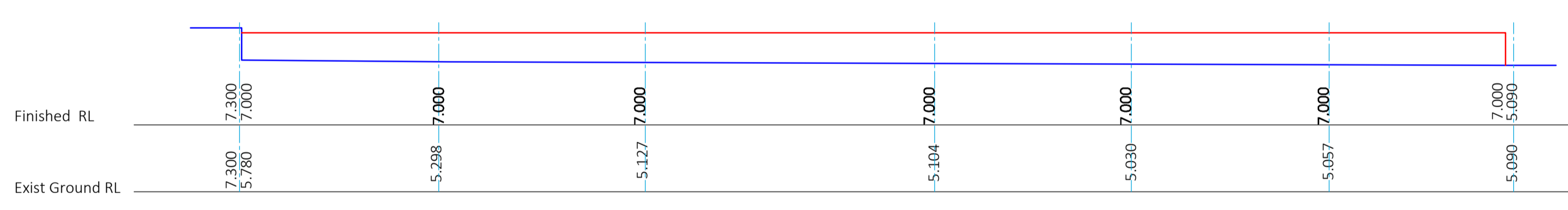
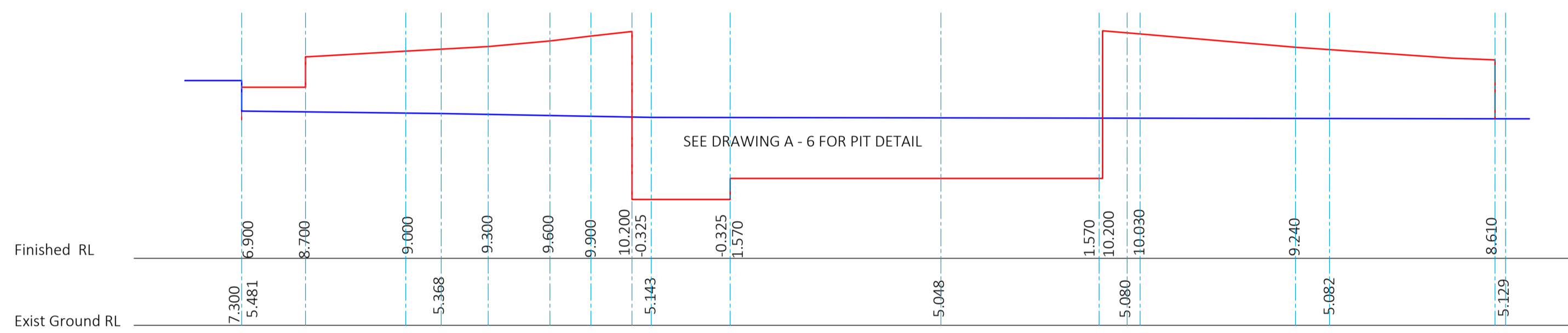
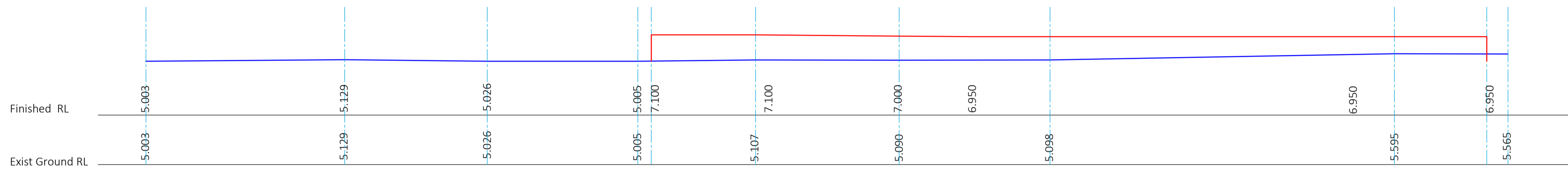
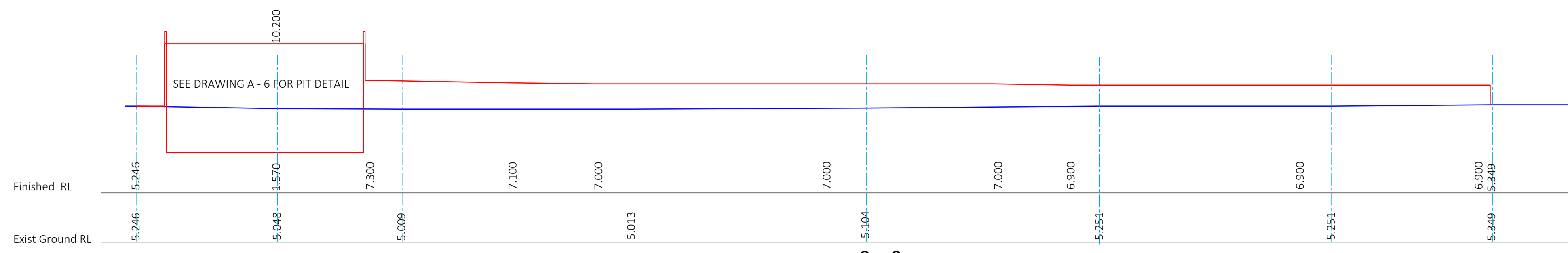
TCH
ABN 50 067 884 119

TAIT CONDON PTY LTD
57 MIDDLETON RD, DEE WHY NSW 2099
PH 02 9972 1207 FAX 02 9972 1227

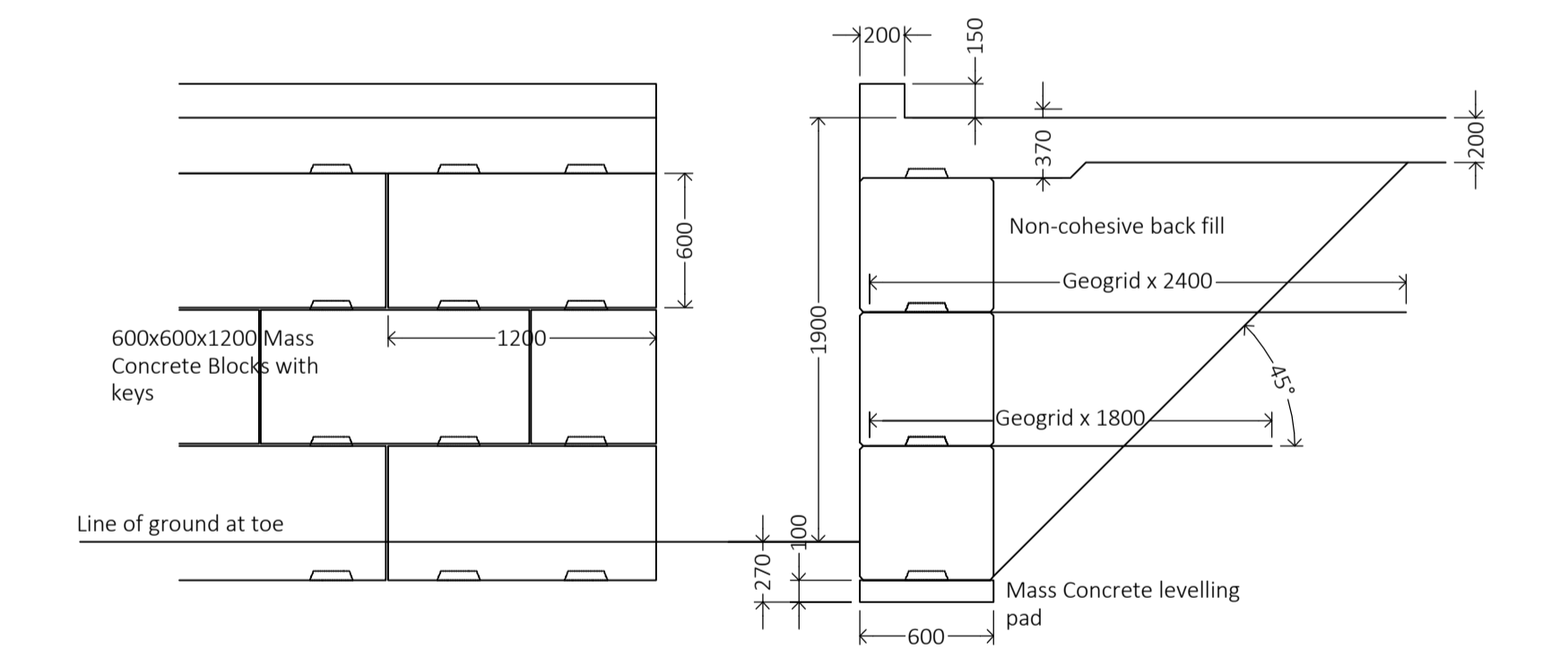
HY-TEC

CUSTOMER - HY-TEC
PROJECT - NEW PLANT 10A GRAND AVE CAMELLIA
CAD FILE #

DRAWING NO. REV. E
HYT-CAM-21-2680-A- 9



H	B
7000	1700
6000	1500
5000	1350
4000	1200
3000	950
2000	700



— EXISTING GROUND
— PROPOSED GROUND LEVEL
--- LINE OF FILL ON WESTERN BOUNDARY

Rev	Description	Date	By
E	Co-ordinate with Drainage Yard level amendments	29-3-22	JRC
D	For DA	6-12-21	JRC
C	Not Issued	-	-
B	Not Issued	-	-

The content & intent of this drawing is the intellectual property of TAIT CONDON PTY LTD (TCH) & is issued for use on this project only. The design & it's intent does not become the property of the client & shall not be used or copied for any other project or purpose. TCH reserves all rights in this matter. This drawing shall not be reproduced or issued to 3rd parties in any form whatsoever without the written authority of TCH & all copies of this drawing will be returned to TCH on request.

TCH
ABN 50 067 884 119

TAIT CONDON PTY LTD
57 MIDDLETON RD, DEE WHY NSW 2099
PH 02 9972 1207 FAX 02 9972 1227



CUSTOMER - HY-TEC
PROJECT - NEW PLANT 10A GRAND AVE CAMELLIA
CAD FILE #

DRAWING NO. REV. E
HYT-CAM-21-2680-A- 10